

# EAUZONE



**matki**

## MATKI

For 50 years Matki has led the way in luxury Showering Design. Our Shower Screens, Shower Trays and Brassware are characterised by their elegant style, reliable performance and outstanding longevity.

All Matki products are designed and made in the United Kingdom. Shower Screens are handmade near Bristol, Shower Trays in Cornwall, and Brassware in Hampshire.

Safety and Quality are central to our ethos and all products and components are tested way beyond industry standards. We have an experienced and attentive Customer Service Team and meaningful guarantees.

Our products can be purchased in the UK, Ireland and France through an extensive Matki Dealer Network, a list of which is available on the Matki website. We strongly recommend viewing displays prior to purchase.

## E A U Z O N E

Elegant, beautifully proportioned designs; Reassuringly structural 10mm thick glass; Real solid brass hardware; EauZone is the perfect choice for luxury showering.

Designed by the Matki in-house Design Team, EauZone represents the pinnacle of innovation and performance in showering. Patents and Design Rights are held for key design features such as the superbly strong anti-slip hinges and expertly curved Radius-20 glass.

Every component is handmade to order in the Matki factory near Bristol by our expert production teams and each EauZone product is carefully checked prior to delivery.

Find the perfect fit for your bathroom with Sliding and Hinged Doors, Wet Room Panels and Bath Screens offered in thousands of sizes and setups. Beyond that EauZone can be tailor-made to your exact requirements with EauZone Bespoke and Ultra Bespoke.

The choices are truly endless.



NEW WET ROOM PANELS



QUINTESSA ENCLOSURES



BATH SCREENS



6

SLIDING ENCLOSURES



12

HINGED ENCLOSURES



32

WET ROOM PANELS



36

HARDWARE & SPECIAL FINISHES



42

BESPOKE & ULTRA BESPOKE



74

SHOWER TRAYS



## NEW! EAUZONE WET ROOM

A new level of elegance for wet rooms. Elevate the style and desirability of your shower area with exciting special finishes and eye-catching finishing touches.

The new EauZone Wet Room Panels secure reassuring 10mm thick Safety Glass to the wall with either aluminium or brass wall frames and a beautifully proportioned solid brass bracket.

### BEST ON BRASS

The brass frames and bracket come in an array of special finishes, plated and hand-polished in the United Kingdom by Swadling Brassware, see page 39. Brushed and polished finishes are at their very best on brass and match sublimely with other luxury bathroom fittings.



EWP - EAUZONE WET ROOM PANEL; BRUSHED BRASS



## ACCESSORISE

To add individual style to your wet room panel, Towel Rails can provide added practicality and decoration, and the new Accent Frames create an alluring sense of definition and unique character.

For pricing and specification please see page 63.



EWP - EAUZONE WET ROOM PANEL WITH LINEAR TOWEL RAIL; BRUSHED BRASS



EWP - EAUZONE WET ROOM PANEL WITH VERTICAL ACCENT FRAME; BRUSHED BRASS



EWP - L-BRACKET CLOSE UP; BRUSHED BRASS



EWFP - EAUZONE FRAMED WET ROOM PANEL; BRUSHED BRASS





EWMP - EAUZONE FRAMED WET ROOM PANEL WITH SILVER MESH GLASS; POLISHED CHROME

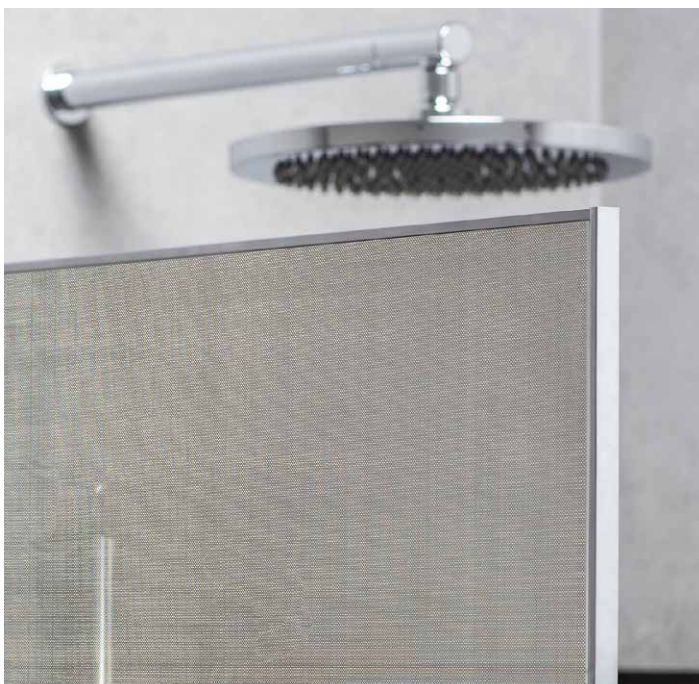
## STRIKING SUBTLETY

Beautifully finished brass frames enclose this wet room panel and enthral at every glint of light they reflect. Minimally proportioned but highly impressive the all-round framing is in harmony with the Matki design principle of understated elegance, and opens up a wealth of unique styling opportunities.

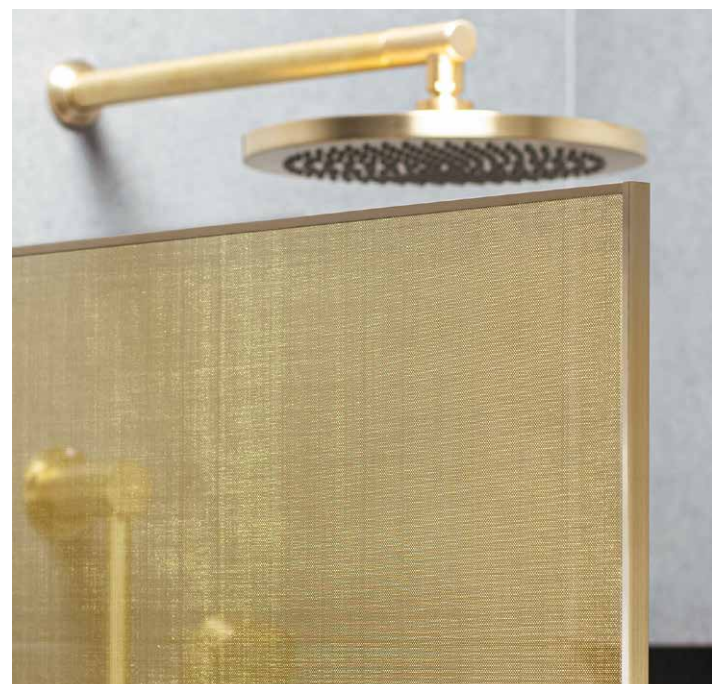
## MESH GLASS IN SILVER OR GOLD

Spell-binding in its shimmering effects and hand-woven appearance, mesh glass transforms a wet room panel into a highly decorative partition. The silver or gold mesh is framed all around and interacts in complimentary or exciting ways with different frame finish combinations.

For pricing and specifications please see page 64 for EWFP, Fully Framed Wet Room Panel, and page 65 for Framed Wet Room Panels with Silver and Gold Mesh Glass.



EWMP - SILVER MESH GLASS WITH POLISHED CHROME FRAMING



EWMP - GOLD MESH GLASS WITH BRUSHED BRASS FRAMING







## SLIDING DOORS

The look and feel of luxury, EauZone Sliding Doors pair a balanced and highly finished appearance with the smoothest, whisper quiet sliding motion.

**Stainless Steel** wall frames and top track are mirror-polished to achieve an impressively reflective surface. Their high tensile strength is ideally suited to carrying the **10mm safety glass** smoothly on the specially shaped track inners.

Easy to clean with **Matki Glass Guard Easy Clean Protection** applied as standard and a **quick door release mechanism** to clean the door-panel overlap, EauZone Sliders have been **CE-Tested to 150,000 open and close cycles**, equivalent to over 100 years of use.

Please see pages 46 – 49 for Sliding Door pricing and specifications.



## OPTIONS

EauZone Sliders are available in three Frame Finishes: Chrome/Mirror-Polished Stainless Steel (Standard); Brushed Steel; and Gold.

Special Glass Finishes are available for most sizes.

## INSTALLATION

EauZone Sliders can be installed on a Shower Tray or Shower Floor, or directly onto a tiled Wet Room floor.



EPST - EAUZONE SLIDER THREE-SIDED

EPSR - EAUZONE SLIDER FOR RECESS













## CURVED CORNER

### A DESIGN FIRST

Uniquely, every panel including the door of the EauZone Curved Corner is engineered from 10mm glass, an impressive testament to the unit's strength and durability and a complete first in Curved Shower Enclosure design.

Taking inspiration from the successful EauZone Slider, the Curved Corner is built from the same high performing materials with a Stainless Steel top track and intricately shaped inner tracks, allowing for a superbly smooth opening movement.

See page 50 for Sizes, Prices and Specification.



ECS900 – EAUZONE CURVED CORNER



## HINGED DOORS

Elegantly designed to accentuate clarity and simplicity, the vertical and horizontal lines of EauZone Hinged Doors are kept free from any visual disruption. Subtle, sleekly styled L-brackets hold the glass firmly in place from the top and blend into the balanced proportions of the design.

Specially crafted **EauZone Anti-Slip Hinges (Patent Number 2470778)** hold the heavy weight of **10mm Safety Glass** securely in place.

EauZone Hinged Doors come with **Matki Glass Guard Easy Clean Protection** as standard and are **CE-Tested to 100,000 cycles of open and close**, 5 times the industry requirement.

Please see pages 51 – 61 for Hinged Door pricing and specifications.









## CHOICE

The EauZone Hinged Collection has a vast selection of over 1,000 standard sizes and panel combinations, making luxurious showering a possibility for any shape or size of bathroom. For specialist projects, EauZone Bespoke and Ultra Bespoke offer made-to-measure size and shape glass.

### MINIMAL FRAMES IN MATT BLACK

Featuring ultra-clear low-iron glass and matt black fixings, this bathroom uses special 11mm Minimal Frames from EauZone Ultra Bespoke to create an impression which is striking but in perfect harmony with its surroundings.

See page 41 for details on different frame types.



EPI – EAUZONE HINGED DOOR WITH HINGE PANEL AND INLINE PANEL FOR RECESS; MATT BLACK

## GLASS AND SPECIAL GLASS FINISHES

EauZone uses only 10mm thick safety glass. This gives the doors and panels a substantial appearance and confidence-inspiring feel. The glass is all in conformance with EN-12150-1 and is regularly tested to ensure safety and compliance.

All EauZone Hinged Doors are available in Special Glass Finishes with the Bespoke and Ultra Bespoke offerings. There is a choice of Standard Clear Glass, Tinted Glass in a number of colours, Ultra Clear Low Iron, Satin/Frosted and the exciting Ultra Black Glass. Ultra Black and Satin/Frosted finishes are ideal for privacy purposes.

See page 40 for more details on Special Glass Finishes.



EPHC- EAUZONE HINGED DOOR WITH HINGE PANEL FOR CORNER; LOW-IRON GLASS







## FRAMES, FITTINGS AND FINISHES

The EauZone Hinged hardware is of an exceptionally high standard with all parts designed, tooled up for, carefully assembled and quality checked by Matki. Most fittings are made of brass which gives them a warmth and depth of reflectivity when plated and polished. Frames are made from aluminium which is more matt in appearance but coloured to complement the overall scheme. From Autumn 2021, the frames will also be available in brass to achieve a perfect match across the whole product – see page 39 for more information.

### INDULGE IN BRUSHED GOLD

The Brushed Gold finish is captivatingly warm, calming the opulence of Gold with a luxurious depth and texture.



EPH – EAUZONE HINGED DOOR WITH HINGE PANEL FOR RECESS; BRUSHED GOLD

## THE EAUZONE HINGE

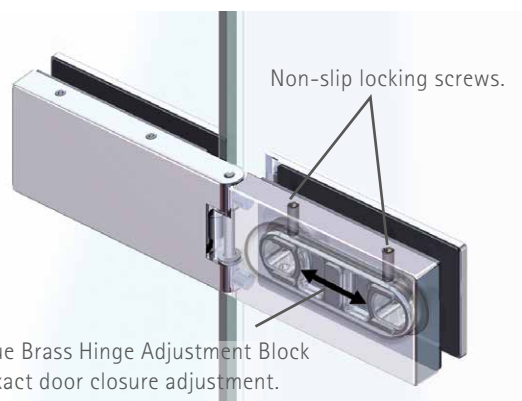
The **EauZone Anti-Slip Hinge (Patent Number 2470778)** was designed by Matki for EauZone Hinged Doors specifically for 10mm thick glass.

The hinge has three main features:

**Strength** – To securely hold heavy glass doors in place for year after year without dropping, the hinge secures onto an Adjustment Block which is bonded to the glass. Two locking screws, once tightened, eliminate any possibility of the door dropping over time.

**Water-Tight Design** – The hinge allows the vertical door seal to travel continuously through it, with no cuts or holes. This ensures it is completely water-tight even during cleaning.

**Calibrated Spring-Loading** – Set to close at just beyond 180 degrees, the hinge permanently pushes at the closure seal and creates a water-tight barrier without the use of friction. This means the door is easy to open and close and if knocked inadvertently during showering will return to closed position.



Unique Brass Hinge Adjustment Block for exact door closure adjustment.









## HIGH STANDARD INSTALLATION

Matki Installations is Matki's in-house team of installation engineers. Operating throughout the UK, they are expert at fitting EauZone Shower Doors and Screens whether standard or bespoke. Please find more information on page 43.





## A STRONG FOUNDATION

Designed by Matki and made at our Shower Tray Facility in Cornwall, Matki Shower Trays and Floors are the ideal foundation for EauZone. A wide range of shapes, sizes, profiles and colours can be found in the Shower Tray pages 74 – 83.

## INSTALLATION

EauZone Hinged Doors can be installed on a Shower Tray, Shower Floor or directly onto a tiled Wet Room Floor.



EPC – EAUZONE HINGED DOOR FOR CORNER

EPR – EAUZONE HINGED DOOR FOR RECESS; POLISHED NICKEL











## EAUZONE RADIUS - 20

In a class of its own, the EauZone Hinge Panel and Door with Radius-20 Side Panel represents the pinnacle of frameless shower design. The visual allure of the expertly curved Radius-20 Side Panel combined with the refined proportions and steadfast reliability of the EauZone Hinged Door design achieves a synthesis with its own distinct character and unique elegance.

Available with or without a Hinge Panel in sizes from 900 up to 1600. Please see pages 60 and 61 for more details on Sizes, Prices and Specification.



EWCL900 + EWL900SP

EHCL – EAUZONE RADIUS-20 WITH HINGE PANEL FOR CORNER; POLISHED GOLD



## EAUZONE QUINTESSE

A true centrepiece. With a structured design and clean minimal lines, the EauZone Quintesse offers a unique solution to fitting a luxurious Corner Shower Enclosure. With its beautifully bevelled glass edges, the EauZone Quintesse Door closes perfectly to the panel with a satisfying finishing touch.

See page 62 for Sizes, Prices and Specification.

### QUINTESSE SHOWER TRAYS

Matki Quintesse Shower Trays (see page 82) are perfectly suited to the EauZone Quintesse, providing a stunning foundation for this unique showering space. EauZone Quintesse can also be installed onto bespoke Quintesse-shaped Matki Preference Floors (see page 80) or directly onto a tiled Wet Room Floor.













ABOVE: EPB - EAUZONE TWO PANEL BATH SCREEN

LEFT: EPD - EAUZONE DOUBLE PANEL BATH SCREEN; MATT BLACK

## E AUZONE BATH SCREENS

EauZone Bath Screens offer a luxurious **water-tight** solution for over-bath showering with single, two panel and folding options presented for flat top baths.

Built exclusively from robust **10mm thick safety glass**, which comes as standard with **Matki Glass Guard Easy Clean Protection**, they share a stylish aesthetic with excellent function.

See page 71 - 72 for Sizes, Prices and Specification.

### DOUBLE PANEL BATH SCREEN

The Double Panel Bath Screen offers an attractive, symmetrical look and has a convenient function with the hinged panel folding away when using the bath for bathing.

See page 73 for Sizes, Prices and Specification.



EPS - EAUZONE WALL HINGED BATH SCREEN





## SPLASH PROTECTION

A luxurious but highly practical wet room screen, perfect for added flexibility and protection against splash and spray. The EauZone Wet Room Panel With Hinge Panel features an innovative discreet **watertight sealing system** which minimises the seal size whilst achieving 100% water retention at the panel join.

See specification and pricing on page 67.



ABOVE: EWT – EAUZONE 12MM GLASS WET ROOM PANEL

LEFT: EWPH – EAUZONE WET ROOM PANEL WITH HINGE PANEL



AST – EAUZONE TWIN ENTRANCE WET ROOM PANEL







## EAUZONE RADIUS-20 WET ROOM PANEL

Unparalleled, distinctive and completely unique, the Radius-20 is engineered from a single sheet of 10mm glass, expertly curved to achieve a softened, fluid edge with a tight 20mm inner radius. Both contemporary and practical, the panel offers a return for extra splash protection, whilst avoiding the need for UV bonds and aluminium corner profiles.

The Radius-20 is available to order with a specially designed solid surface, Matki Preference Tray (EWLT) pictured, with additional base support to match the unique shape of the panel.

See page 66 for Sizes, Prices and Specification.



EWL - EAUZONE RADIUS-20 WET ROOM PANEL ON SPECIAL EWLT SHOWER TRAY

36. HANDLES

LINEAR (STANDARD)



SINGLE STRAIGHT



For Sliding and Curved Models

TRADITIONAL



CURVED



ENGINEER



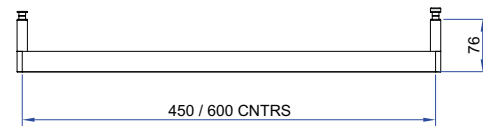
ILLUSTRIOUS



LINEAR TOWEL RAIL



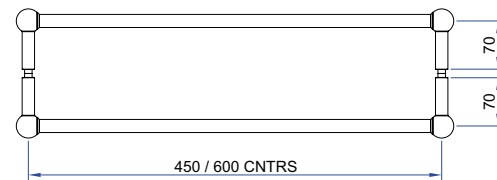
LTR - Single Towel Rail for Wet Room and Side Panels  
 LTR-D - Single Towel Rail with Internal Handle/Soap Hook



TRADITIONAL TOWEL RAIL



TTR - Single Towel Rail for Wet Room and Side Panels  
 TTRDS - Double Sided Towel Rail



TOWEL RAILS	£ EX. VAT	£ INC. VAT
LTR450/TTR450	£151.00	£181.20
LTR600/TTR600	£200.00	£240.00
LTR450D	£166.00	£199.20
LTR600D	£251.00	£301.20
TTRDS450	£350.00	£420.00
TTRDS600	£350.00	£420.00

FINISHES	£ EX. VAT	£ INC. VAT
Ⓢ Polished Chrome - CP (Standard)	-	-
Ⓢ Polished Nickel - NP / Living Brass - BB	£35.00	£42.00
Ⓢ Brushed Nickel - NB / Brushed Brass - BB	£50.00	£60.00
Ⓢ Living Copper - LC / Polished Gold - MG	£62.00	£74.40
Ⓢ Aged Brass - AB / Black Chrome - XP	£68.00	£81.60
Ⓢ Brushed Gold -GB / Brushed Black Chrome - XB	£75.00	£90.00



## 38. SPECIAL FINISHES

ILLUSTRIOUS



ENGINEER



INVINCIBLE



ABSOLUTE



Part of Matki since the early 2000s, Swadling Brassware has four designer basin, bath and shower mixer collections and over 40 years of experience in plating and polishing special finishes.



For a perfect match, Swadling Brassware and EauZone parts are plated in the same tanks, then beautifully finished by the same expert team.

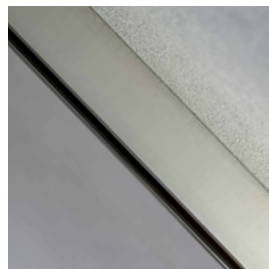
**(S)** POLISHED CHROME



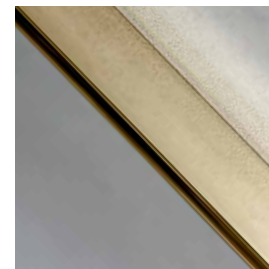
**(S)** POLISHED NICKEL



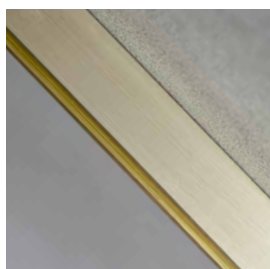
**(S)** BRUSHED NICKEL



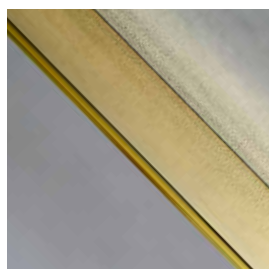
**(S)** POLISHED GOLD



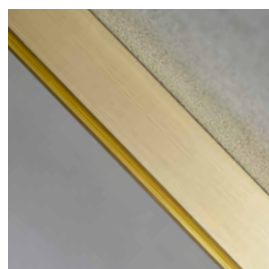
**(S)** BRUSHED GOLD



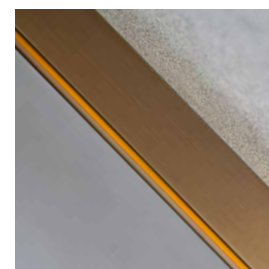
**(S)** LIVING BRASS\*



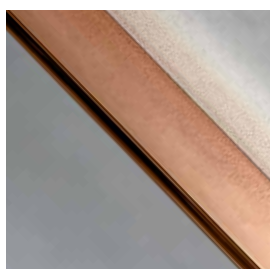
**(S)** BRUSHED BRASS\*



**(S)** AGED BRASS\*



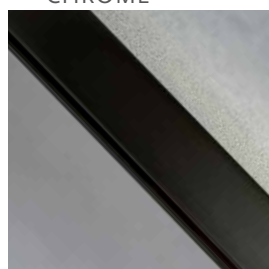
**(S)** LIVING COPPER\*



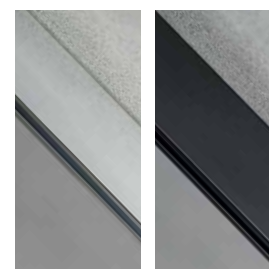
**(S)** BLACK CHROME



**(S)** BRUSHED BLACK CHROME



ALUMINIUM FINISHES



SILVER (STANDARD)

MATT BLACK

Finishes marked with an **(S)** will match perfectly across the product as they are applied purely to frames and fittings made exclusively from brass.

\*Living Finishes can however vary across and between parts and unless regularly maintained will oxidise over time in unpredictable ways.

**(S)** Swadling Brassware finishes are available for EauZone Wet Room Panel models EWP, EWFP, EWMP, EWL, EWPH, see product pages for details.

For EauZone Hinged, the **(S)** finishes are available from Autumn 2021. Prior to that time, please contact Matki for pricing and availability of existing Matki special finishes including Polished Nickel, Brushed Nickel, Gold and Brushed Gold. These existing finishes use a combination of brass and aluminium material so will differ in colouration and texture between parts, please view samples.

## EAUZONE SLIDING AND CURVED ENCLOSURES

Models: EPSR, EPSC, EPSC-REV, EPST, ECS

CHROME / POLISHED STEEL



BRUSHED STEEL

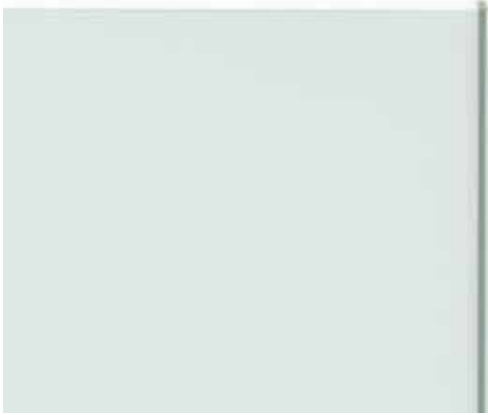


GOLD



40. GLASS FINISHES

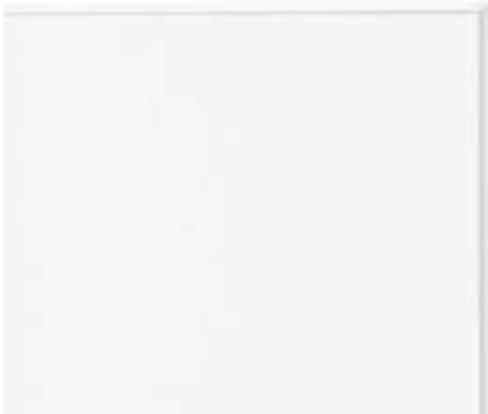
STANDARD CLEAR GLASS



BLUE TINTED GLASS



ULTRA CLEAR LOW IRON GLASS



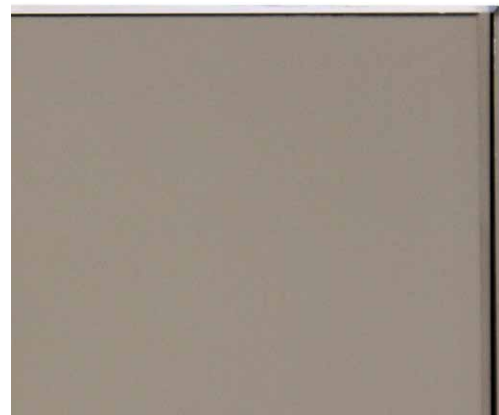
GREEN TINTED GLASS



FROSTED/SATIN GLASS



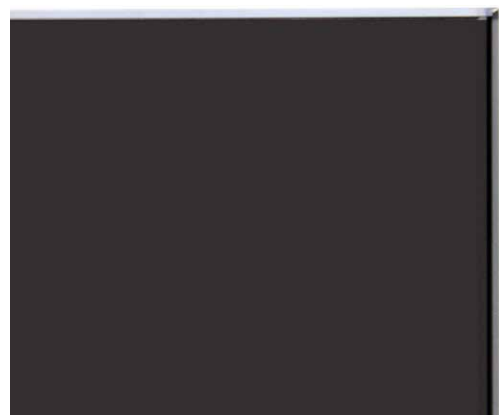
BRONZE TINTED GLASS



BLACK TINTED GLASS



ULTRA BLACK GLASS





STANDARD FRAME



28mm Profile  
All finishes  
Standard & Bespoke (BES)  
Max. height 2.4m

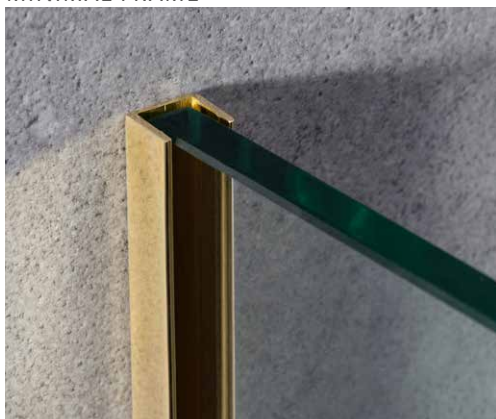
NEW! MEDIUM FRAME



17mm Profile  
Ⓢ finishes only  
Standard & Bespoke (BES) option for select Wet Room Panels  
Max. height 2.5m

ULTRA BESPOKE (ULTR) FRAMING

MINIMAL FRAME



11mm Profile  
All finishes  
Ultra Bespoke (ULTR)  
Max. height 3m

RECESSED FRAME



2.5mm Profile  
All finishes  
Ultra Bespoke (ULTR)  
Max. height 3m

COMPLETELY FRAMELESS



No frame  
All finishes  
Ultra Bespoke (ULTR)

Note on Ultra Bespoke Frame Types

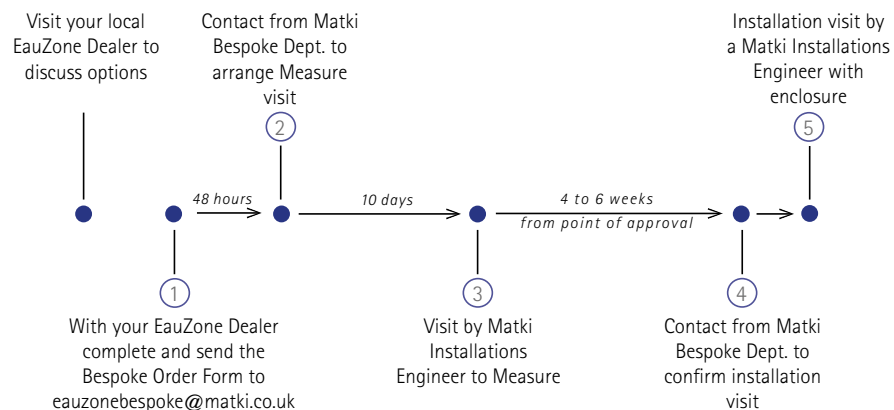
Ultra Bespoke Frames due to their narrow profile, allow for very little adjustment. To ensure a perfect fit every time, models with Minimal or Recessed Frames and Completely Frameless models are measured and installed by Matki Installations. See page 43 for more details.

ULTRA BESPOKE Ⓢ FINISHES FOR HINGED DOOR MODELS	£ EX. VAT	£ INC. VAT
Sliver/Chrome - SC (Standard)	-	-
Matt Black - MB (Ultra Bespoke Frames only)	£468.00	561.60
Ⓢ Living Brass - LB	£400.00	480.00
Ⓢ Polished Chrome - CP / Brushed Brass - BB	£500.00	600.00
Ⓢ Polished Nickel - NP / Living Copper - LC	£693.00	831.60
Ⓢ Brushed Nickel - NB / Aged Brass - AB	£827.00	992.40
Ⓢ Polished Gold - MG / Black Chrome - XP	£850.00	1,020.00
Ⓢ Brushed Gold - GB / Brushed Black Chrome - XB	£999.00	1,198.80

Ⓢ finishes from Autumn 2021, for nickel and gold finishes prior to then please contact Matki

## 42. BESPOKE & ULTRA BESPOKE ORDER TIMELINES

### WITH MEASURE & INSTALLATION:



- From start to finish Matki Bespoke Measure and Installation will take approximately 6 - 8 weeks

### WITHOUT MEASURE & INSTALLATION:



#### PLEASE NOTE:

- All time periods stated are estimated and can vary dependent on customer approval
- For recessed channels - first fix channels delivered out prior to Measure to be fitted by your installer/tiler prior to tiling. Measure and Install service only
- Measure only and Install only options also available



For Bespoke (BES) and Ultra Bespoke (ULTR) pricing and options please see individual product pages 46 to 73.



Ensuring your EauZone is fitted perfectly, Matki Installations is a friendly and efficient in-house team operating throughout the United Kingdom and abroad. The following services are offered:

#### HIGH STANDARD INSTALLATION

This expert installation-only service can be ordered for all EauZone and EauZone Bespoke (BES) Shower Door, Wet Panel and Bath Screen products. To order, please add the Installation code (INST) as a suffix to your chosen EauZone or EauZone Bespoke (BES) model.

#### MEASURE & INSTALLATION

A prerequisite for EauZone Ultra Bespoke (ULTR) models due to the highly accurate measurements and more complex fitting required, Measure and Installation is also optional for EauZone and EauZone Bespoke (BES) models where you would like extra peace of mind.

The Matki Installations team will always clear away and recycle all packaging and leave your new showering area sparkling.

Please make sure you read the Matki Installations [Important Information](#) on the Matki website prior to ordering the service and that tiling is complete prior to the team's visit.

#### EXTENDED GUARANTEE

All Matki products installed by Matki Installations benefit from an extended 15 year guarantee with the initial 3 year period also having labour cost cover. Please register your guarantee on the Matki website with the details provided.

To book Matki Installations please contact our Bespoke Department on [eauzonebespoke@matki.co.uk](mailto:eauzonebespoke@matki.co.uk) or 01454 322888, or contact your nearest Matki EauZone Dealer.

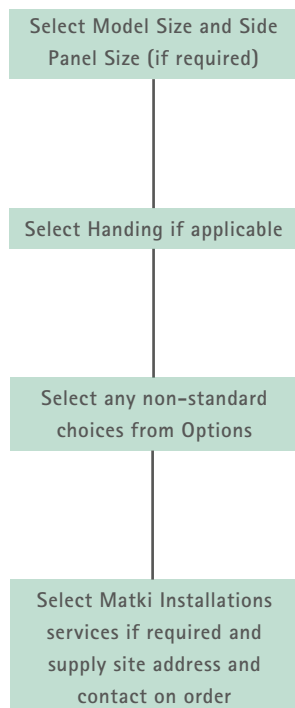
For Matki Installations services outside the UK mainland, please contact Matki for pricing.



## 44. HOW TO ORDER

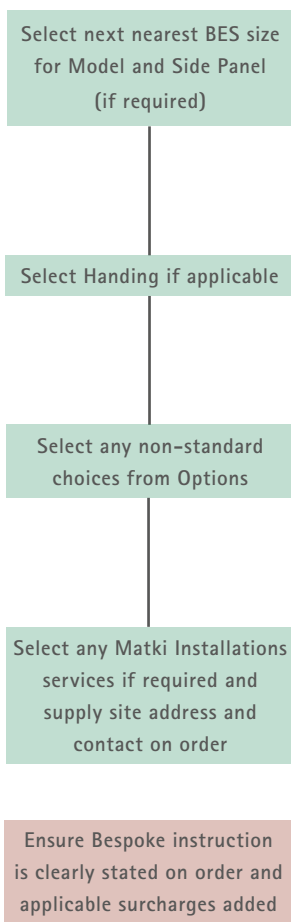
### EAUZONE

Choose Model and Options required adding suffixes and surcharges to the main model code and price



### EAUZONE BESPOKE

Choose from Bespoke (BES) Models for special widths and heights, adding suffixes to the Model BES codes and surcharges to price



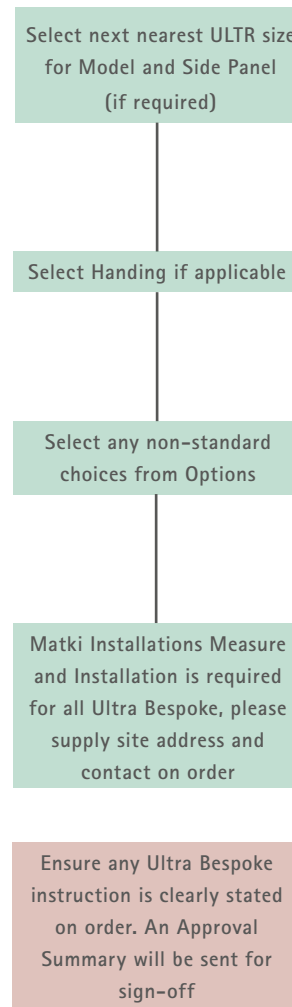
#### Important Information

Please note for bespoke height glass required to fit floor to ceiling use Ultra Bespoke as Glass Shaping and additional brackets may be required.

Width measurements supplied for Bespoke will be treated as midpoints of the adjustment ranges for the products selected.

### EAUZONE ULTRA BESPOKE

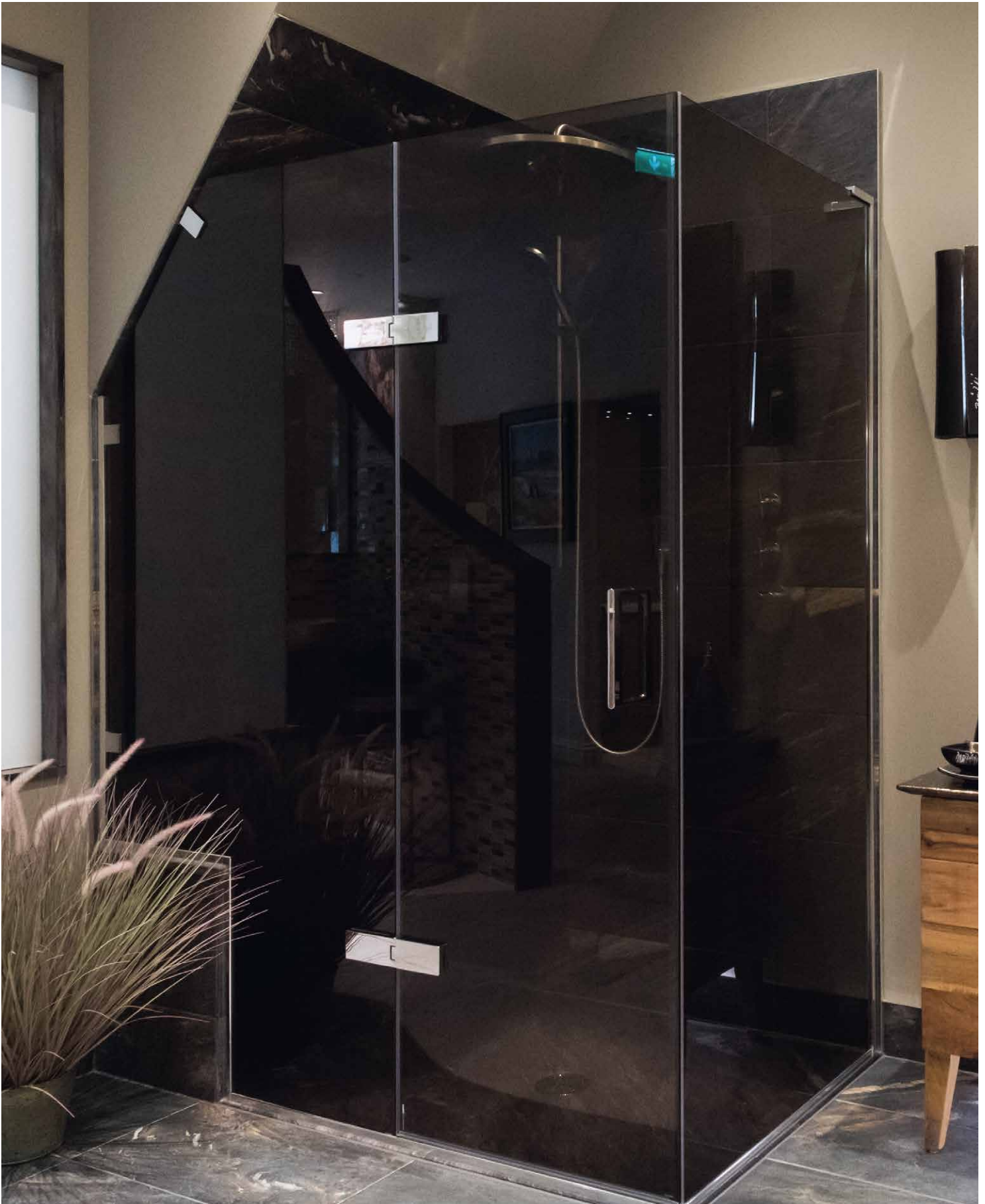
Choose from Ultra Bespoke (ULTR) codes for Minimal and Recessed Frames and Completely Frameless, and for any Glass Shaping, adding suffixes to the Model ULTR codes and surcharges to price



#### Important Information

Please note prices can change up to point of Approval Summary sign-off

If you are unsure of the details, you can order a Measure with Matki Installations at £210 ex VAT and request on order for Matki Installations to help you specify model type and any bespoke required.



## 46. EPSR: SLIDING DOOR WITH FIXED PANELS FOR RECESS

### HOW TO ORDER

- Select RECESS DOOR model from table below
- Make choices from OPTIONS table, adding suffix codes to model code and surcharges to model price; standard options will be supplied unless otherwise specified
- Bespoke (BES) sizes are listed, please see the BESPOKE OPTIONS table and page 44 for more information

RECESS DOOR	DIMENSIONS (MM)				PRICES	
	A	B	C	D	£ EX. VAT	£ INC. VAT
EPSR1100	1062-1092	430	55-70	477-497	£1,494.00	£1,792.80
EPSR1125	1087-1117	430	80-95	477-497	£1,494.00	£1,792.80
EPSR1150	1112-1142	430	105-120	477-497	£1,494.00	£1,792.80
EPSR1175	1137-1167	430	130-145	477-497	£1,494.00	£1,792.80
EPSR1200	1162-1192	465	55-70	523-543	£1,494.00	£1,792.80
EPSR1225	1187-1217	465	80-95	523-543	£1,703.00	£2,043.60
EPSR1250	1212-1242	465	105-120	523-543	£1,703.00	£2,043.60
EPSR1275	1237-1267	465	130-145	523-543	£1,703.00	£2,043.60
EPSR1300	1262-1292	465	155-170	523-543	£1,703.00	£2,043.60
EPSR1325	1287-1317	465	180-195	523-543	£1,709.00	£2,050.80
EPSR1350	1312-1342	465	205-220	523-543	£1,709.00	£2,050.80
EPSR1375	1337-1367	465	230-245	523-543	£1,709.00	£2,050.80
EPSR1400	1362-1392	465	255-270	523-543	£1,709.00	£2,050.80
EPSR1400BES	Up to 1387mm	465	-	-	£1,920.00	£2,304.00
EPSR1425	1387-1417	465	280-295	523-543	£1,723.00	£2,067.60
EPSR1450	1412-1442	465	305-320	523-543	£1,723.00	£2,067.60
EPSR1475	1437-1467	465	330-345	523-543	£1,723.00	£2,067.60
EPSR1500	1462-1492	610	55-70	678-693	£1,723.00	£2,067.60
EPSR1525	1487-1517	610	80-95	678-693	£1,784.00	£2,140.80
EPSR1550	1512-1542	610	105-120	678-693	£1,784.00	£2,140.80
EPSR1575	1537-1567	610	130-145	678-693	£1,784.00	£2,140.80
EPSR1600	1562-1592	610	155-170	678-693	£1,784.00	£2,140.80
EPSR1625	1587-1617	610	180-195	678-693	£1,869.00	£2,242.80
EPSR1650	1612-1642	610	205-220	678-693	£1,869.00	£2,242.80
EPSR1675	1637-1667	610	230-245	678-693	£1,869.00	£2,242.80
EPSR1700	1662-1692	610	255-270	678-693	£1,869.00	£2,242.80
EPSR1725	1687-1717	610	280-295	678-693	£1,938.00	£2,325.60
EPSR1750	1712-1742	610	305-320	678-693	£1,938.00	£2,325.60
EPSR1775	1737-1767	610	330-345	678-693	£1,938.00	£2,325.60
EPSR1800	1762-1792	610	355-370	678-693	£1,938.00	£2,325.60
EPSR1800BES	Up to 1787mm	610	-	-	£2,216.00	£2,659.20

MATKI INSTALLATIONS	CODE	£ EX. VAT	£ INC. VAT
Measure	MS	£210.00	£252.00
Installation - Standard or Bespoke	INST	£604.00	£724.80
Measure and Installation	MSINST	£814.00	£976.80

See page 43. Measure is optional for Standard and Bespoke (BES) models but required for Ultra Bespoke (ULTR). Product and Installation prices may change after measure. For areas outside the UK mainland, please contact Matki for pricing. Please contact Matki for installation prices at heights above 2200mm.



### OPTIONS

#### HANDLING

Left Hand - LH

Right Hand - RH

#### HANDLES

Linear - LNR (Standard)

Traditional - TRAD

Curved - CRV

Single Straight - SGL

#### FRAME FINISHES

Chrome/Mirror-Polished Stainless Steel - SC (Standard)

£ EX. VAT

£ INC. VAT

Brushed Steel - ST

£468.00

£561.60

Gold - SG

£468.00

£561.60

#### BESPOKE (BES) & ULTRA BESPOKE (ULTR) OPTIONS

BES  
Add Surcharges to BES Prices

Width changes up to max dimensions listed

✓

Width changes above max dimensions <sup>1</sup>

Add £165 per 100mm

Reduced height <sup>2</sup>

✓

Increased height per panel/door <sup>2</sup>

Add £120 per 100mm

Circular Hole Handle

Add £115 ex VAT

All Glass finish prices refer to whole product EPSR

Tinted / Low Iron Glass Finish <sup>3</sup> (see page 40)

Add £600 ex VAT

Satin/Frosted Glass Finish <sup>3</sup>

Add £660 ex VAT

Ultra Black Glass Finish <sup>3</sup>

Add £925 ex VAT

<sup>1</sup> Max RECESS DOOR 2500mm wide.

<sup>2</sup> Height changes only available for RECESS DOOR models with C Panel 180 - 195 size and upwards. Reduced height options on models with C Panel below 180 - 195 at 1800, 1850, 1900 and 1950mm high. Other height changes for Models 1500 to 1625 available but with smaller 465 door size.

<sup>3</sup> Special glass finishes only available for RECESS DOOR models with C Panel 180 - 195 size and upwards. Special glass finishes for Models 1500 to 1625 available but with smaller 465 door size.



HOW TO ORDER

- Select CORNER DOOR model and SIDE PANEL model from tables below
- Make choices from OPTIONS table, adding suffix codes to EPSC CORNER DOOR code and surcharges to CORNER DOOR price; standard options will be supplied unless otherwise specified
- Bespoke (BES) CORNER DOOR and SIDE PANEL sizes are listed, please see the BESPOKE OPTIONS table and page 44 for more information. Ultra Bespoke (ULTR) available for SIDE PANEL only

DIMENSIONS (MM)				PRICES		
CORNER DOOR	A	B	C	D	£ EX. VAT	£ INC. VAT
EPSC1100	1072-1087	430	56	477-497	£1,494.00	£1,792.80
EPSC1125	1097-1112	430	81	477-497	£1,494.00	£1,792.80
EPSC1150	1122-1137	430	106	477-497	£1,494.00	£1,792.80
EPSC1175	1147-1162	430	131	477-497	£1,494.00	£1,792.80
EPSC1200	1172-1187	465	56	523-543	£1,494.00	£1,792.80
EPSC1225	1197-1212	465	81	523-543	£1,703.00	£2,043.60
EPSC1250	1222-1237	465	106	523-543	£1,703.00	£2,043.60
EPSC1275	1247-1262	465	131	523-543	£1,703.00	£2,043.60
EPSC1300	1272-1287	465	156	523-543	£1,703.00	£2,043.60
EPSC1325	1297-1312	465	181	523-543	£1,709.00	£2,050.80
EPSC1350	1322-1337	465	206	523-543	£1,709.00	£2,050.80
EPSC1375	1347-1362	465	231	523-543	£1,709.00	£2,050.80
EPSC1400	1372-1387	465	256	523-543	£1,709.00	£2,050.80
EPSC1400BES	Up to 1387mm	465	-	-	£1,920.00	£2,304.00
EPSC1425	1397-1412	465	281	523-543	£1,723.00	£2,067.60
EPSC1450	1422-1437	465	306	523-543	£1,723.00	£2,067.60
EPSC1475	1447-1462	465	331	523-543	£1,723.00	£2,067.60
EPSC1500	1472-1487	610	56	678-693	£1,723.00	£2,067.60
EPSC1525	1497-1512	610	81	678-693	£1,784.00	£2,140.80
EPSC1550	1522-1537	610	106	678-693	£1,784.00	£2,140.80
EPSC1575	1547-1562	610	131	678-693	£1,784.00	£2,140.80
EPSC1600	1572-1587	610	156	678-693	£1,784.00	£2,140.80
EPSC1625	1597-1612	610	181	678-693	£1,869.00	£2,242.80
EPSC1650	1622-1637	610	206	678-693	£1,869.00	£2,242.80
EPSC1675	1647-1662	610	231	678-693	£1,869.00	£2,242.80
EPSC1700	1672-1687	610	256	678-693	£1,869.00	£2,242.80
EPSC1725	1697-1712	610	281	678-693	£1,938.00	£2,325.60
EPSC1750	1722-1737	610	306	678-693	£1,938.00	£2,325.60
EPSC1775	1747-1762	610	331	678-693	£1,938.00	£2,325.60
EPSC1800	1772-1787	610	356	678-693	£1,938.00	£2,325.60
EPSC1800BES	Up to 1787mm	610	-	-	£2,216.00	£2,659.20

SIDE PANEL	E	£ EX. VAT	£ INC. VAT
EPSC700SP	671 - 686	£459.00	£550.80
EPSC760SP	731 - 746	£493.00	£591.60
EPSC800SP	771 - 786	£528.00	£633.60
EPSC800SPBES	Up to 800mm	£782.00	£938.40
EPSC800SPULTR	Up to 800mm	£934.00	£1,120.80
EPSC900SP	871 - 886	£596.00	£715.20
EPSC1000SP	971 - 986	£679.00	£814.80
EPSC1000SPBES	Up to 1000mm	£991.00	£1,189.20
EPSC1000SPULTR	Up to 1000mm	£1,145.00	£1,374.00



MATKI INSTALLATIONS	CODE	£ EX. VAT	£ INC. VAT
Measure	MS	£210.00	£252.00
Installation - Standard or Bespoke	INST	£683.00	£819.60
Measure and Installation	MSINST	£893.00	£1,071.60

See page 43. Measure is optional for Standard and Bespoke (BES) models but required for Ultra Bespoke (ULTR). Product and Installation prices may change after measure. For areas outside the UK mainland, please contact Matki for pricing. Please contact Matki for installation prices at heights above 2200mm.

OPTIONS

HANDING	
Left Hand Corner - LH	Right Hand Corner - RH

HANDLES	
Linear - LNR (Standard)	Traditional - TRAD
Curved - CRV	Single Straight - SGL

FRAME FINISHES	£ EX. VAT	£ INC. VAT
Chrome/Mirror-Polished Stainless Steel - SC (Standard)	-	-
Brushed Steel - ST	£468.00	£561.60
Gold - SG	£468.00	£561.60

BESPOKE (BES) & ULTRA BESPOKE (ULTR) OPTIONS	BES	ULTR
	Add Surcharges to BES/ULTR Prices	
Width changes up to dimensions listed	✓	✓
Width changes above max dimensions <sup>1</sup>	Add £165 per 100mm (Side Panel £115 ex VAT)	Add £115 per 100mm ex VAT
Reduced height <sup>2</sup>	✓	✓
Increased height per panel/door <sup>2</sup>	Add £120 ex VAT per 100mm	
Glass Shaping: e.g. Angles, Cut Outs <sup>3</sup>	✗	✓
Circular Hole Handle	Add £115 ex VAT	N/A
<b>All Glass finish prices refer to whole product EPSC + SP</b>		
Tinted / Low Iron Glass Finish <sup>4</sup> (see page 40)	Add £750 ex VAT	
Satin/Frosted Glass Finish <sup>4</sup>	Add £840 ex VAT	
Ultra Black Glass Finish <sup>4</sup>	Add £1,280 ex VAT	

<sup>1</sup> Max CORNER DOOR 2500mm wide.

<sup>2</sup> Height changes only available for CORNER models with C Panel 181 size and upwards. Reduced Height options on models with C Panel below 181 at 1800, 1850, 1900 and 1950mm high. Other height changes for Models 1500 to 1625 available but with smaller 465 door size.

<sup>3</sup> Only available on SIDE PANEL and require Measure and Installation.

<sup>4</sup> Special glass finishes only available for CORNER DOOR models with C Panel 181 size and upwards. Special glass finishes for Models 1500 to 1625 available but with smaller 465 door size.

## 48. EPSCREV: REVERSE SLIDING DOOR WITH FIXED PANELS FOR CORNER

### HOW TO ORDER

- Select REVERSE CORNER DOOR model and SIDE PANEL model from tables below
- Make choices from OPTIONS table, adding suffix codes to REVERSE CORNER DOOR code and surcharges to REVERSE CORNER DOOR price; standard options will be supplied unless otherwise specified
- Bespoke (BES) REVERSE CORNER DOOR and SIDE PANEL sizes are listed, please see the BESPOKE OPTIONS table and page 44 for more information. Ultra Bespoke (ULTR) available for SIDE PANEL only

DIMENSIONS (MM)				PRICES		
REVERSE CORNER DOOR	A	B	C	D	£ EX. VAT	£ INC. VAT
EPSCREV1100	1072-1087	430	56	477-497	£1,494.00	£1,792.80
EPSCREV1125	1097-1112	430	81	477-497	£1,494.00	£1,792.80
EPSCREV1150	1122-1137	430	106	477-497	£1,494.00	£1,792.80
EPSCREV1175	1147-1162	430	131	477-497	£1,494.00	£1,792.80
EPSCREV1200	1172-1187	465	56	523-543	£1,494.00	£1,792.80
EPSCREV1225	1197-1212	465	81	523-543	£1,703.00	£2,043.60
EPSCREV1250	1222-1237	465	106	523-543	£1,703.00	£2,043.60
EPSCREV1275	1247-1262	465	131	523-543	£1,703.00	£2,043.60
EPSCREV1300	1272-1287	465	156	523-543	£1,703.00	£2,043.60
EPSCREV1325	1297-1312	465	181	523-543	£1,709.00	£2,050.80
EPSCREV1350	1322-1337	465	206	523-543	£1,709.00	£2,050.80
EPSCREV1375	1347-1362	465	231	523-543	£1,709.00	£2,050.80
EPSCREV1400	1372-1387	465	256	523-543	£1,709.00	£2,050.80
EPSCREV1400BES	Up to 1387mm	465	-	-	£1,920.00	£2,304.00
EPSCREV1425	1397-1412	465	281	523-543	£1,723.00	£2,067.60
EPSCREV1450	1422-1437	465	306	523-543	£1,723.00	£2,067.60
EPSCREV1475	1447-1462	465	331	523-543	£1,723.00	£2,067.60
EPSCREV1500	1472-1487	610	56	678-693	£1,723.00	£2,067.60
EPSCREV1525	1497-1512	610	81	678-693	£1,784.00	£2,140.80
EPSCREV1550	1522-1537	610	106	678-693	£1,784.00	£2,140.80
EPSCREV1575	1547-1562	610	131	678-693	£1,784.00	£2,140.80
EPSCREV1600	1572-1587	610	156	678-693	£1,784.00	£2,140.80
EPSCREV1625	1597-1612	610	181	678-693	£1,869.00	£2,242.80
EPSCREV1650	1622-1637	610	206	678-693	£1,869.00	£2,242.80
EPSCREV1675	1647-1662	610	231	678-693	£1,869.00	£2,242.80
EPSCREV1700	1672-1687	610	256	678-693	£1,869.00	£2,242.80
EPSCREV1725	1697-1712	610	281	678-693	£1,938.00	£2,325.60
EPSCREV1750	1722-1737	610	306	678-693	£1,938.00	£2,325.60
EPSCREV1775	1747-1762	610	331	678-693	£1,938.00	£2,325.60
EPSCREV1800	1772-1787	610	356	678-693	£1,938.00	£2,325.60
EPSCREV1800BES	Up to 1787mm	610	-	-	£2,216.00	£2,659.20
SIDE PANEL	E	£ EX. VAT	£ INC. VAT			
EPSCREV700SP	671 – 686	£459.00	£550.80			
EPSCREV760SP	731 – 746	£493.00	£591.60			
EPSCREV800SP	771 – 786	£528.00	£633.60			
EPSCREV800SPBES	Up to 800mm	£782.00	£938.40			
EPSCREV800SPULTR	Up to 800mm	£934.00	£1,120.80			
EPSCREV900SP	871 – 886	£596.00	£715.20			
EPSCREV1000SP	971 – 986	£679.00	£814.80			
EPSCREV1000BES	Up to 1000mm	£991.00	£1,189.20			
EPSCREV1000SPULTR	Up to 1000mm	£1,145.00	£1,374.00			



MATKI INSTALLATIONS	CODE	£ EX. VAT	£ INC. VAT
Measure	MS	£210.00	£252.00
Installation – Standard or Bespoke	INST	£683.00	£819.60
Measure and Installation	MSINST	£893.00	£1,071.60

See page 43. Measure is optional for Standard and Bespoke (BES) models but required for Ultra Bespoke (ULTR). Product and Installation prices may change after measure. For areas outside the UK mainland, please contact Matki for pricing. Please contact Matki for installation prices at heights above 2200mm.

### OPTIONS

HANDING			
Left Hand Corner – LH	Right Hand Corner – RH		
HANDLES			
Linear – LNR (Standard)	Traditional – TRAD		
Curved – CRV	Single Straight – SGL		
FRAME FINISHES		£ EX. VAT	£ INC. VAT
Chrome/Mirror-Polished Stainless Steel – SC (Standard)		-	-
Brushed Steel – ST		£468.00	£561.60
Gold – SG		£468.00	£561.60

BESPOKE (BES) & ULTRA BESPOKE (ULTR) OPTIONS	BES	ULTR (SIDE PANEL)
	Add Surcharges to BES/ULTR Prices	
Width changes up to max dimensions listed	✓	✓
Width changes above max dimensions <sup>1</sup>	Add £165 per 100mm (Side Panel £115 ex VAT)	Add £115 per 100mm ex VAT
Reduced height <sup>2</sup>	✓	✓
Increased height per panel/door <sup>2</sup>	Add £120 per 100mm ex VAT	
Glass Shaping: e.g. Angles, Cut Outs <sup>3</sup>	✗	✓
Circular Hole Handle	Add £115 ex VAT	N/A
<b>All Glass finish prices refer to whole product EPSCREV + SP</b>		
Tinted / Low Iron Glass Finish <sup>4</sup> (see page 40)	Add £750 ex VAT	
Satin/Frosted Glass Finish <sup>4</sup>	Add £840 ex VAT	
Ultra Black Glass Finish <sup>4</sup>	Add £1,280 ex VAT	

<sup>1</sup> Max REVERSE CORNER DOOR 2500mm wide.

<sup>2</sup> Height changes only available for REVERSE CORNER DOOR models with C Panel 181 size and upwards. Reduced height options on models with C Panel below 181 at 1800, 1850, 1900 and 1950mm high. Other height changes for models 1500 to 1625 available but with smaller 465 door size.

<sup>3</sup> Only available on SIDE PANEL and require Measure and Installation.

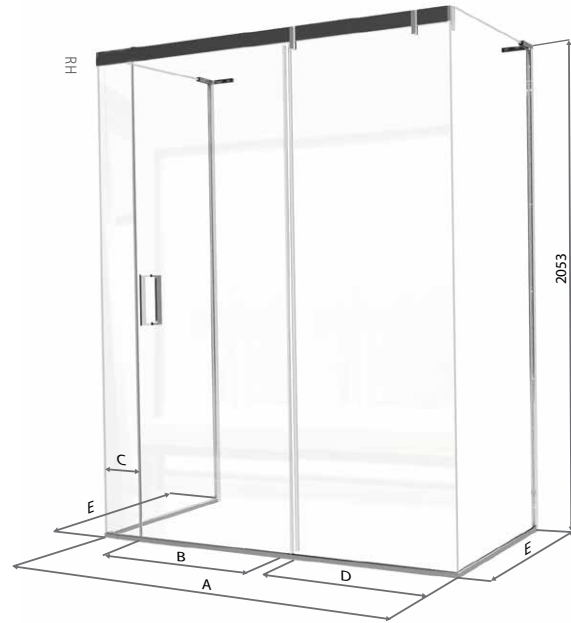
<sup>4</sup> Special glass finishes only available for REVERSE CORNER DOOR models with C Panel 181 size and upwards. Special glass finishes for models 1500 to 1625 available but with smaller 465 door size.

HOW TO ORDER

- Select THREE-SIDED DOOR model and SIDE PANEL models sizes then Options from table
- Make choices from OPTIONS table, adding suffix codes to THREE-SIDED DOOR price code and surcharges to THREE-SIDED DOOR price; standard options will be supplied unless otherwise specified
- Bespoke (BES) THREE-SIDED DOOR and SIDE PANEL sizes are listed, please see more information below and on page 44. Ultra Bespoke available for SIDE PANELS only

DIMENSIONS (MM)				PRICES		
THREE-SIDED DOOR	A	B	C	D	£ EX. VAT	£ INC. VAT
EPST1100	1090	430	55-70	477-497	£1,494.00	£1,792.80
EPST1125	1115	430	80-95	477-497	£1,494.00	£1,792.80
EPST1150	1140	430	105-120	477-497	£1,494.00	£1,792.80
EPST1175	1165	430	130-145	477-497	£1,494.00	£1,792.80
EPST1200	1190	465	55-70	523-543	£1,494.00	£1,792.80
EPST1225	1215	465	80-95	523-543	£1,703.00	£2,043.60
EPST1250	1240	465	105-120	523-543	£1,703.00	£2,043.60
EPST1275	1265	465	130-145	523-543	£1,703.00	£2,043.60
EPST1300	1290	465	155-170	523-543	£1,703.00	£2,043.60
EPST1325	1315	465	180-195	523-543	£1,709.00	£2,050.80
EPST1350	1340	465	205-220	523-543	£1,709.00	£2,050.80
EPST1375	1365	465	230-245	523-543	£1,709.00	£2,050.80
EPST1400	1390	465	255-270	523-543	£1,709.00	£2,050.80
EPST1400BES	Up to 1390mm	465	-	-	£1,920.00	£2,304.00
EPST1425	1415	465	280-295	523-543	£1,723.00	£2,067.60
EPST1450	1440	465	305-320	523-543	£1,723.00	£2,067.60
EPST1475	1465	465	330-345	523-543	£1,723.00	£2,067.60
EPST1500	1490	610	55-70	678-693	£1,723.00	£2,067.60
EPST1525	1515	610	80-95	678-693	£1,784.00	£2,140.80
EPST1550	1540	610	105-120	678-693	£1,784.00	£2,140.80
EPST1575	1565	610	130-145	678-693	£1,784.00	£2,140.80
EPST1600	1590	610	155-170	678-693	£1,784.00	£2,140.80
EPST1625	1615	610	180-195	678-693	£1,869.00	£2,242.80
EPST1650	1640	610	205-220	678-693	£1,869.00	£2,242.80
EPST1675	1665	610	230-245	678-693	£1,869.00	£2,242.80
EPST1700	1690	610	255-270	678-693	£1,869.00	£2,242.80
EPST1725	1715	610	280-295	678-693	£1,938.00	£2,325.60
EPST1750	1740	610	305-320	678-693	£1,938.00	£2,325.60
EPST1775	1765	610	330-345	678-693	£1,938.00	£2,325.60
EPST1800	1790	610	355-370	678-693	£1,938.00	£2,325.60
EPST1800BES	Up to 1790mm	610	-	-	£2,216.00	£2,659.20

SIDE PANEL (ADD 2)	E	£ EX. VAT	£ INC. VAT
EPST700SP	671 - 686	£459.00	£550.80
EPST760SP	731 - 746	£493.00	£591.60
EPST800SP	771 - 786	£528.00	£633.60
EPST800SPBES	Up to 800mm	£782.00	£938.40
EPST800SPULTR	Up to 800mm	£934.00	£1,120.80
EPST900SP	871 - 886	£596.00	£715.20
EPST1000SP	971 - 986	£679.00	£814.80
EPST1000SPBES	Up to 1000mm	£991.00	£1,189.20
EPST1000SPULTR	Up to 1000mm	£1,145.00	£1,374.00



MATKI INSTALLATIONS	CODE	£ EX. VAT	£ INC. VAT
Measure	MS	£210.00	£252.00
Installation - Standard or Bespoke	INST	£761.00	£913.20
Measure and Installation	MSINST	£971.00	£1,165.20

See page 43. Measure is optional for Standard and Bespoke (BES) models but required for Ultra Bespoke (ULTR). Product and Installation prices may change after measure. For areas outside the UK mainland, please contact Matki for pricing. Please contact Matki for installation prices at heights above 2200mm.

OPTIONS

HANDING	
Left Hand - LH	Right Hand - RH

HANDLES	
Linear - LNR (Standard)	Traditional - TRAD
Curved - CRV	Single Straight - SGL

FRAME FINISHES	£ EX. VAT	£ INC. VAT
Chrome/Mirror-Polished Stainless Steel - SC (Standard)	-	-
Brushed Steel - ST	£495.00	£594.00
Gold - SG	£495.00	£594.00

BESPOKE (BES) & ULTRA BESPOKE (ULTR) OPTIONS	BES	ULTR (SIDE PANEL)
	Add Surcharges to BES/ULTR Prices	
Width changes up to max dimensions listed	✓	✓
Width changes above max dimensions <sup>1</sup>	Add £165 per 100mm (Side Panel £115 ex VAT)	Add £115 per 100mm ex VAT
Reduced height <sup>2</sup>	✓	✓
Increased height per panel/door <sup>2</sup>	Add £120 per 100mm ex VAT	
Glass Shaping: e.g. Angles, Cut Outs <sup>3</sup>	✗	✓
Circular Hole Handle	Add £115 ex VAT	N/A
<b>All Glass finish prices refer to whole product EPST + 2 x SP</b>		
Tinted / Low Iron Glass Finish <sup>4</sup> (see page 40)	Add £900 ex VAT	
Satin/Frosted Glass Finish <sup>4</sup>	Add £1,020 ex VAT	
Ultra Black Glass Finish <sup>4</sup>	Add £1,635 ex VAT	

<sup>1</sup> Max THREE-SIDED DOOR 2500mm wide.

<sup>2</sup> Height changes only available for THREE-SIDED DOOR models with C Panel 181 size and upwards. Reduced Height options on models with C Panel below 181 at 1800, 1850, 1900 and 1950mm high. Other height changes for Models 1500 to 1625 available but with smaller 465 door size.

<sup>3</sup> Only available on SIDE PANELS and require Measure and Installation

<sup>4</sup> Special glass finishes only available for THREE-SIDED DOOR models with C Panel 181 size and upwards. Special glass finishes for Models 1500 to 1625 available but with smaller 465 door size.



## 50. ECS: CURVED CORNER

### HOW TO ORDER

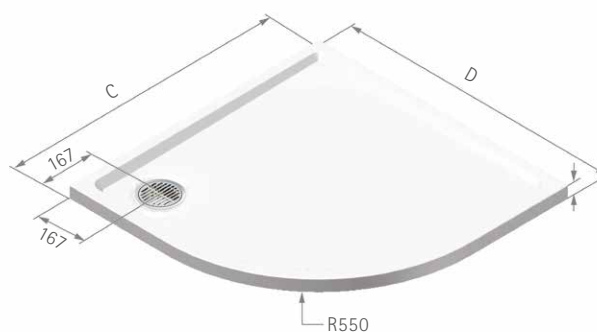
- Select CURVED model from tables below, choosing with or without shower tray
- Make choices from OPTIONS table, adding suffix codes to CURVED or CURVED + TRAY code and surcharges to the model prices; standard options will be supplied unless otherwise specified
- Bespoke (BES) sizes are listed, please see the BESPOKE OPTIONS table and page 44 for more information

DIMENSIONS (MM)		PRICES		
CURVED	A	B	£ EX. VAT	£ INC. VAT
ECS900	876 - 890	325 - 340	£2,442.00	£2,930.40
ECS1290	1176 - 1190	625 - 640	£2,569.00	£3,082.80
ECS1590	1476 - 1490	925 - 940	£2,704.00	£3,244.80
ECS1590BES	Up to 1500mm		£3,062.00	£3,674.40
ECS2090BES	Up to 2000mm		£3,233.00	£3,879.60
CURVED + TRAY	C	D	£ EX. VAT	£ INC. VAT
ECS900T	900	900	£2,811.00	£3,373.20
ECS1290T	1200	900	£2,985.00	£3,582.00
ECS1590T	1500	900	£3,141.00	£3,769.20

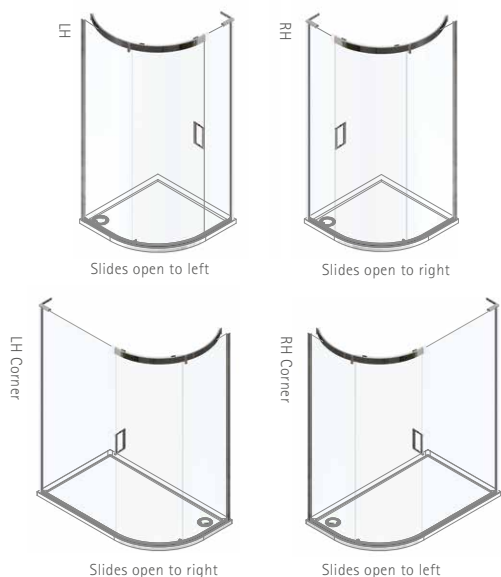
Choose from CLC or ULC tray models on page 82, for standard sizes; MP and MF models on page 79-80 can be used for bespoke sizes. Waste for CLC and ULC trays is located in RH Corner for ECS1200T and ECS1500T models with LH corner handing, and in LH corner for all other models.

MATKI INSTALLATIONS	CODE	£ EX. VAT	£ INC. VAT
Measure	MS	£210.00	£252.00
Installation - Standard or Bespoke	INST	£604.00	£724.80
Measure and Installation	MSINST	£814.00	£976.80

See page 43. Measure is optional for Standard and Bespoke (BES) models but required for Glass Shaping. Product and Installation prices may change after measure. For areas outside the UK mainland, please contact Matki for pricing.



### CONFIGURATIONS & HANDING



### OPTIONS

HANDING			
ECS900, ECS900T	Left Hand - LH	Right Hand - RH	
ECS1290, ECS1590, ECS1290T, ECS1590T	Left Hand Corner - LH	Right Hand Corner - RH	
HANDLES			
Linear - LNR (Standard)	Traditional - TRAD		
Curved - CRV	Single Straight - SGL		
FRAME FINISHES		£ EX. VAT	£ INC. VAT
Chrome/Mirror-Polished Stainless Steel (Standard) - SC		-	-
Brushed Steel - ST		£468.00	£561.60
Gold - SG		£468.00	£561.60
BESPOKE (BES) & ULTRA BESPOKE (ULTR) OPTIONS		BES Add Surcharges to BES Prices	
Panel B width changes up to max dimensions listed		✓	
Glass Shaping: e.g. Angles, Cut Outs <sup>1</sup>		Add £335 ex VAT	

<sup>1</sup> Only available on PANEL B and require Measure and Installation

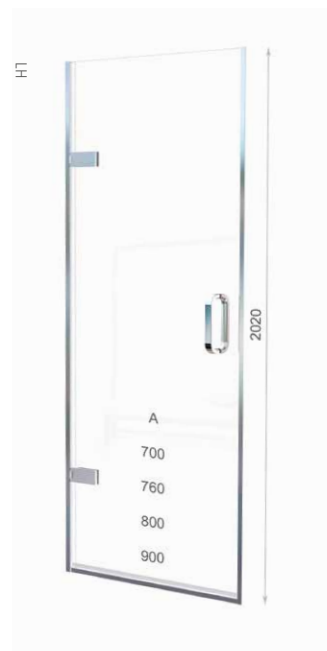
HOW TO ORDER

- Select RECESS model from table below
- Make choices from OPTIONS table, adding suffix codes to EPR RECESS code and surcharges to RECESS price; Standard options will be supplied unless otherwise specified
- Bespoke (BES) and Ultra Bespoke (ULTR) RECESS sizes are listed, please see the BESPOKE OPTIONS table and page 44 for more information

DIMENSIONS (MM)		PRICES	
RECESS	A	£ EX. VAT	£ INC. VAT
EPR700	675 – 700	£1,065.00	£1,278.00
EPR760	735 – 760	£1,080.00	£1,296.00
EPR760BES	Up to 760mm	£1,261.00	£1,513.20
EPR760ULTR	Up to 760mm	£1,326.00	£1,591.20
EPR800	775 – 800	£1,094.00	£1,312.80
EPR900	875 – 900	£1,122.00	£1,346.40
EPR900BES	Up to 900mm	£1,305.00	£1,566.00
EPR900ULTR	Up to 900mm	£1,352.00	£1,622.40

MATKI INSTALLATIONS	CODE	£ EX. VAT	£ INC. VAT
Measure	MS	£210.00	£252.00
Installation - Standard or Bespoke	INST	£447.00	£536.40
Measure and Installation	MSINST	£657.00	£788.40

See page 43. Measure is optional for Standard and Bespoke (BES) models but required for Ultra Bespoke (ULTR). Product and Installation prices may change after measure. For areas outside the UK mainland, please contact Matki for pricing. Please contact Matki for installation prices at heights above 2200mm.



OPTIONS

HANDING		DOOR OPENING	
Left Hand - LH	Right Hand - RH	Outwards (Standard)	Inwards - INW*

\*INW from Autumn 2021, available in Ultra Bespoke prior to then

HANDLES	
Linear - LNR (Standard)	Traditional - TRAD
Ⓢ Illustrious - IST	Ⓢ Engineer - ENG (Add £85 ex VAT)

FRAME ACCENTS	£ EX. VAT	£ INC. VAT
None (Standard)	-	-
EPR Frame Accent Pack - FVP*	£275.00	£330.00

\*Only available in Ⓢ finishes below from Autumn 2021

FRAME FINISHES	£ EX. VAT	£ INC. VAT
Sliver/Chrome - SC (Standard)	-	-
Matt Black - MB (Ultra Bespoke Frames only)	£468.00	£561.60
Ⓢ Living Brass - LB	£1,225.00	£1,470.00
Ⓢ Polished Chrome - CP / Brushed Brass - BB	£1,350.00	£1,620.00
Ⓢ Polished Nickel - NP / Living Copper - LC	£1,524.00	£1,828.80
Ⓢ Brushed Nickel - NB / Aged Brass - AB	£1,649.00	£1,978.80
Ⓢ Polished Gold - MG / Black Chrome - XP	£1,657.00	£1,988.40
Ⓢ Brushed Gold - GB / Brushed Black Chrome - XB	£1,776.00	£2,131.20

Ⓢ finishes from Autumn 2021, for nickel and gold finishes prior to then please contact Matki.

For Ⓢ Finish Surcharges on Ultra Bespoke Frames, please refer to page 41.

BESPOKE (BES) & ULTRA BESPOKE (ULTR) OPTIONS	BES	ULTR
	Add Surcharges to BES/ULTR Prices	
Width changes up to dimensions listed	✓	✓
Reduced height	✓	✓
Increased height per panel/door 1*	Add £75 per 100mm ex VAT	
Glass Shaping: e.g. Angles 2	✗	✓
Circular Hole Handle	Add £115 ex VAT	
Tinted / Low Iron Glass Finish (see page 40)	Add £155 ex VAT	
Satin/Frosted Glass Finish	Add £180 ex VAT	
Ultra Black Glass Finish	Add £360 ex VAT	
Ultra Bespoke Frames - see page 41 2*	✗	✓

1 Max 2.4 high with BES (standard frames), Max 3m with ULTR. Additional Hinge (£200 ex VAT) may be required.

2 Require Measure and Installation.

\* For special glass finishes in oversize dimensions, add 10% to Glass Finish surcharges for every 100mm of extra height or width above maximum standard size panels.

## 52. EPW: HINGE DOOR WITH INLINE PANEL FOR RECESS

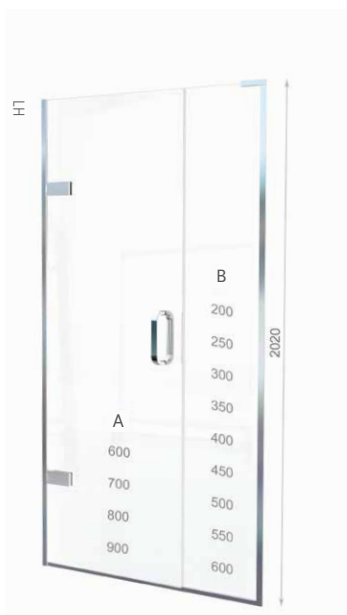
### HOW TO ORDER

- Select RECESS Model from table below
- Alternative standard door and panel combinations are available at the same price for each model size. The drawing opposite shows the standard panel sizes available
- Make choices from OPTIONS table, adding suffix codes to EPW RECESS code and surcharges to RECESS price; Standard options will be supplied unless otherwise specified
- Bespoke (BES) and Ultra Bespoke (ULTR) RECESS sizes are listed, please see the BESPOKE OPTIONS table and page 44 for more information

DIMENSIONS (MM)			PRICES		
RECESS	A + B	A	B	£ EX. VAT	£ INC. VAT
EPW800	770 – 800	600	200	£1,300.00	£1,560.00
EPW850	820 – 850	600	250	£1,308.00	£1,569.60
EPW900	870 – 900	700	200	£1,313.00	£1,575.60
EPW950	920 – 950	700	250	£1,326.00	£1,591.20
EPW1000	970 – 1000	800	200	£1,334.00	£1,600.80
EPW1000BES	Up to 1000mm			£1,686.00	£2,023.20
EPW1000ULTR	Up to 1000mm			£1,881.00	£2,257.20
EPW1050	1020 – 1050	800	250	£1,347.00	£1,616.40
EPW1100	1070 – 1100	900	200	£1,363.00	£1,635.60
EPW1150	1120 – 1150	900	250	£1,376.00	£1,651.20
EPW1200	1170 – 1200	700	500	£1,398.00	£1,677.60
EPW1250	1220 – 1250	800	450	£1,412.00	£1,694.40
EPW1300	1270 – 1300	900	400	£1,426.00	£1,711.20
EPW1300BES	Up to 1300mm			£1,827.00	£2,192.40
EPW1300ULTR	Up to 1300mm			£2,033.00	£2,439.60
EPW1350	1320 – 1350	900	450	£1,441.00	£1,729.20
EPW1400	1370 – 1400	900	500	£1,448.00	£1,737.60
EPW1450	1420 – 1450	900	550	£1,461.00	£1,753.20
EPW1500	1470 – 1500	900	600	£1,475.00	£1,770.00
EPW1500BES	Up to 1500mm			£1,875.00	£2,250.00
EPW1500ULTR	Up to 1500mm			£2,092.00	£2,510.40

MATKI INSTALLATIONS	CODE	£ EX. VAT	£ INC. VAT
Measure	MS	£210.00	£252.00
Installation - Standard or Bespoke	INST	£525.00	£630.00
Measure and Installation	MSINST	£735.00	£882.00

See page 43. Measure is optional for Standard and Bespoke (BES) models but required for Ultra Bespoke (ULTR). Product and Installation prices may change after measure. For areas outside the UK mainland, please contact Matki for pricing. Please contact Matki for installation prices at heights above 2200mm.



### OPTIONS

HANDING	DOOR OPENING
Left Hand - LH    Right Hand - RH	Outwards (Standard)    Inwards - INW*

\*INW from Autumn 2021, available in Ultra Bespoke prior to then

HANDLES
Linear - LNR (Standard)    Traditional - TRAD
<span style="border: 1px solid black; border-radius: 50%; padding: 2px;">S</span> Illustrious - IST <span style="border: 1px solid black; border-radius: 50%; padding: 2px;">S</span> Engineer - ENG (Add £85 ex VAT)

FRAME ACCENTS	£ EX. VAT	£ INC. VAT
None (Standard)	-	-
EPW Frame Accent Pack - FVP*	£275.00	£330.00

\*Only available in S finishes below from Autumn 2021

FRAME FINISHES	£ EX. VAT	£ INC. VAT
Sliver/Chrome - SC (Standard)	-	-
Matt Black - MB (Ultra Bespoke Frames only)	£468.00	£561.60
<span style="border: 1px solid black; border-radius: 50%; padding: 2px;">S</span> Living Brass - LB	£675.00	£810.00
<span style="border: 1px solid black; border-radius: 50%; padding: 2px;">S</span> Polished Chrome - CP / Brushed Brass - BB	£800.00	£960.00
<span style="border: 1px solid black; border-radius: 50%; padding: 2px;">S</span> Polished Nickel - NP / Living Copper - LC	£984.00	£1,180.80
<span style="border: 1px solid black; border-radius: 50%; padding: 2px;">S</span> Brushed Nickel - NB / Aged Brass - AB	£1,113.00	£1,335.60
<span style="border: 1px solid black; border-radius: 50%; padding: 2px;">S</span> Polished Gold - MG / Black Chrome - XP	£1,129.00	£1,354.80
<span style="border: 1px solid black; border-radius: 50%; padding: 2px;">S</span> Brushed Gold - GB / Brushed Black Chrome - XB	£1,263.00	£1,515.60

S finishes from Autumn 2021, for nickel and gold finishes prior to then please contact Matki.  
For S Finish Surcharges on Ultra Bespoke Frames, please refer to page 41.

BESPOKE (BES) & ULTRA BESPOKE (ULTR) OPTIONS	BES	ULTR
	Add Surcharges to BES/ULTR Prices	
Width changes up to dimensions listed	✓	✓
Width changes above max panel dims. listed <sup>1*</sup>	Add £100 per 100mm ex VAT	
Reduced height	✓	✓
Increased height per panel/door <sup>2*</sup>	Add £75 per 100mm ex VAT	
Glass Shaping: e.g. Angles, Cut Outs <sup>3</sup>	✗	✓
Circular Hole Handle	Add £115 ex VAT	
<b>All Glass finish prices refer to whole product EPW</b>		
Tinted / Low Iron Glass Finish (see page 40)	Add £210 ex VAT	
Satin/Frosted Glass Finish	Add £255 ex VAT	
Ultra Black Glass Finish	Add £470 ex VAT	
Ultra Bespoke Frames - see page 41 <sup>3</sup>	✗	✓

<sup>1</sup> B Panel only; always requires brace bar (add £126 ex VAT for SC and MB; £188 ex VAT for S finishes) or ceiling bracket (add £90 ex VAT).

<sup>2</sup> Max 2.4 high with BES (standard frames), Max 3m with ULTR. Additional Hinge (£200 ex VAT) may be required.

<sup>3</sup> Require Measure and Installation

\* For special glass finishes in oversize dimensions, add 10% to Glass Finish surcharges for every 100mm of extra height and for every 100mm of extra width above maximum standard size product.



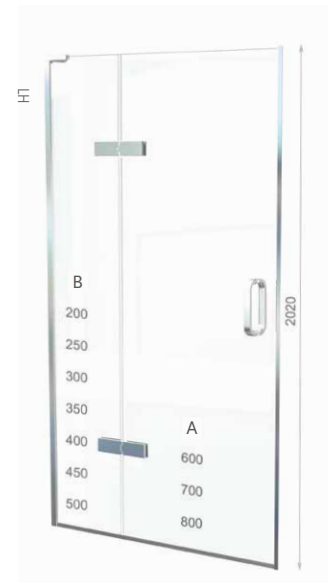
HOW TO ORDER

- Select RECESS Model from table below
- Alternative standard door and panel combinations are available at the same price for each model size. The drawing opposite shows the standard panel sizes available
- Make choices from OPTIONS table, adding suffix codes to EPH RECESS code and surcharges to RECESS price; Standard options will be supplied unless otherwise specified
- Bespoke (BES) and Ultra Bespoke (ULTR) RECESS sizes are listed, please see the BESPOKE OPTIONS table and page 44 for more information

DIMENSIONS (MM)			PRICES		
RECESS	A + B	A	B	£ EX. VAT	£ INC. VAT
EPH800	772 – 797	600	200	£1,546.00	£1,855.20
EPH850	822 – 847	600	250	£1,550.00	£1,860.00
EPH900	872 – 897	700	200	£1,558.00	£1,869.60
EPH950	922 – 947	700	250	£1,569.00	£1,882.80
EPH1000	972 – 997	800	200	£1,585.00	£1,902.00
EPH1000BES	Up to 1000mm			£1,728.00	£2,073.60
EPH1000ULTR	Up to 1000mm			£1,920.00	£2,304.00
EPH1050	1022 – 1047	800	250	£1,596.00	£1,915.20
EPH1100	1072 – 1097	700	400	£1,610.00	£1,932.00
EPH1150	1122 – 1147	700	450	£1,627.00	£1,952.40
EPH1200	1172 – 1197	700	500	£1,640.00	£1,968.00
EPH1250	1222 – 1247	800	450	£1,654.00	£1,984.80
EPH1300	1272 – 1297	800	500	£1,667.00	£2,000.40
EPH1300BES	Up to 1300mm			£1,887.00	£2,264.40
EPH1300ULTR	Up to 1300mm			£2,072.00	£2,486.40

MATKI INSTALLATIONS	CODE	£ EX. VAT	£ INC. VAT
Measure	MS	£210.00	£252.00
Installation - Standard or Bespoke	INST	£525.00	£630.00
Measure and Installation	MSINST	£735.00	£882.00

See page 43. Measure is optional for Standard and Bespoke (BES) models but required for Ultra Bespoke (ULTR). Product and Installation prices may change after measure. For areas outside the UK mainland, please contact Matki for pricing. Please contact Matki for installation prices at heights above 2200mm.



OPTIONS

HANDING	DOOR OPENING
Left Hand - LH    Right Hand - RH	Outwards (Standard)    Inwards - INW*
	*INW from Autumn 2021

HANDLES
Linear - LNR (Standard)    Traditional - TRAD
Ⓢ Illustrious - IST    Ⓢ Engineer - ENG (Add £85 ex VAT)

FRAME ACCENTS	£ EX. VAT	£ INC. VAT
None (Standard)	-	-
EPW Frame Accent Pack - FVP*	£515.00	£618.00

\*Only available in Ⓢ finishes below

FRAME FINISHES	£ EX. VAT	£ INC. VAT
Sliver/Chrome - SC (Standard)	-	-
Matt Black - MB (Ultra Bespoke Frames only)	£468.00	£561.60
Ⓢ Living Brass - LB	£675.00	£810.00
Ⓢ Polished Chrome - CP / Brushed Brass - BB	£800.00	£960.00
Ⓢ Polished Nickel - NP / Living Copper - LC	£984.00	£1,180.80
Ⓢ Brushed Nickel - NB / Aged Brass - AB	£1,113.00	£1,335.60
Ⓢ Polished Gold - MG / Black Chrome - XP	£1,129.00	£1,354.80
Ⓢ Brushed Gold - GB / Brushed Black Chrome - XB	£1,263.00	£1,515.60

Ⓢ finishes from Autumn 2021, for nickel and gold finishes prior to then please contact Matki.  
For Ⓢ Finish Surcharges on Ultra Bespoke Frames, please refer to page 41.

BESPOKE (BES) & ULTRA BESPOKE (ULTR) OPTIONS	BES	ULTR
	Add Surcharges to BES/ULTR Prices	
Width changes up to dimensions listed	✓	✓
Width changes above max panel dims. listed <sup>1*</sup>	Add £100 per 100mm ex VAT	
Reduced height	✓	✓
Increased height per panel/door <sup>2*</sup>	Add £75 per 100mm ex VAT	
Glass Shaping: e.g. Angles, Cut Outs <sup>3</sup>	✗	✓
Circular Hole Handle	Add £115 ex VAT	
<b>All Glass finish prices refer to whole product EPH</b>		
Tinted / Low Iron Glass Finish - see page 40	Add £195 ex VAT	
Satin/Frosted Glass Finish	Add £243 ex VAT	
Ultra Black Glass Finish	Add £440 ex VAT	
Ultra Bespoke Frames - see page 41 <sup>3</sup>	✗	✓

<sup>1</sup> B Panel only; always requires brace bar (add £126 ex VAT for SC and MB; £188 ex VAT for Ⓢ finishes) or ceiling bracket (add £90 ex VAT).

<sup>2</sup> Max 2.4 high with BES (standard frames), Max 3m with ULTR. Additional Hinge (£200 ex VAT) may be required.

<sup>3</sup> Require Measure and Installation.

\* For special glass finishes in oversize dimensions, add 10% to Glass Finish surcharges for every 100mm of extra height and for every 100mm of extra width above maximum standard size product.

## 54. EPI: HINGED DOOR WITH HINGE PANEL AND INLINE PANEL FOR RECESS

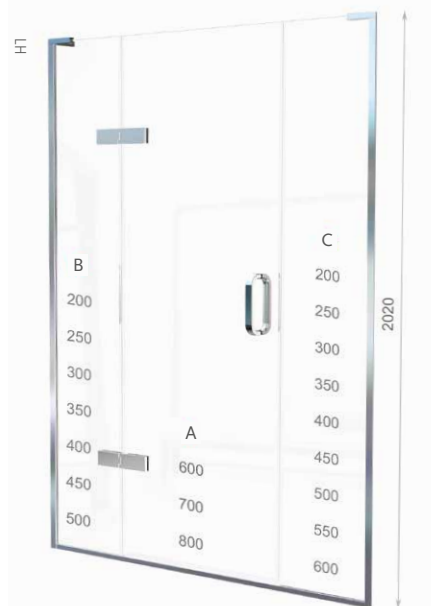
### HOW TO ORDER

- Select RECESS model from table below
- Alternative standard door and panel combinations are available at the same price for each model size. The drawing opposite shows the standard panel sizes available
- Make choices from OPTIONS table, adding suffix codes to EPI RECESS code and surcharges to RECESS price; Standard options will be supplied unless otherwise specified
- Bespoke (BES) and Ultra Bespoke (ULTR) RECESS sizes are listed, please see the BESPOKE OPTIONS table and page 44 for more information

DIMENSIONS (MM)				PRICES		
RECESS	A + B + C	A	B	C	£ EX. VAT	£ INC. VAT
EPI1000	965 – 995	600	200	200	£1,762.00	£2,114.40
EPI1050	1015 – 1045	600	250	200	£1,768.00	£2,121.60
EPI1100	1065 – 1095	700	200	200	£1,774.00	£2,128.80
EPI1150	1115 – 1145	700	250	200	£1,786.00	£2,143.20
EPI1200	1165 – 1195	800	200	200	£1,802.00	£2,162.40
EPI1250	1215 – 1245	800	250	200	£1,814.00	£2,176.80
EPI1300	1265 – 1295	700	200	400	£1,830.00	£2,196.00
EPI1300BES	Up to 1300mm				£2,217.00	£2,660.40
EPI1300ULTR	Up to 1300mm				£2,520.00	£3,024.00
EPI1350	1315 – 1345	800	250	300	£1,840.00	£2,208.00
EPI1400	1365 – 1395	800	200	400	£1,858.00	£2,229.60
EPI1450	1415 – 1445	800	250	400	£1,870.00	£2,244.00
EPI1500	1465 – 1495	700	400	400	£1,883.00	£2,259.60
EPI1550	1515 – 1545	800	400	350	£1,898.00	£2,277.60
EPI1600	1565 – 1595	800	400	400	£1,911.00	£2,293.20
EPI1600BES	Up to 1600mm				£2,360.00	£2,832.00
EPI1600ULTR	Up to 1600mm				£2,729.00	£3,274.80
EPI1650	1615 – 1645	800	450	400	£1,928.00	£2,313.60
EPI1700	1665 – 1695	800	450	450	£1,940.00	£2,328.00
EPI1750	1715 – 1745	800	500	450	£1,945.00	£2,334.00
EPI1800	1765 – 1795	800	500	500	£1,966.00	£2,359.20
EPI1850	1815 – 1845	800	500	550	£1,976.00	£2,371.20
EPI1900	1865 – 1895	800	500	600	£1,988.00	£2,385.60
EPI1900BES	Up to 1900mm				£2,522.00	£3,026.40
EPI1900ULTR	Up to 1900mm				£2,879.00	£3,454.80

MATKI INSTALLATIONS	CODE	£ EX. VAT	£ INC. VAT
Measure	MS	£210.00	£252.00
Installation - Standard or Bespoke	INST	£604.00	£724.80
Measure and Installation	MSINST	£814.00	£976.80

See page 43. Measure is optional for Standard and Bespoke (BES) models but required for Ultra Bespoke (ULTR). Product and Installation prices may change after measure. For areas outside the UK mainland, please contact Matki for pricing. Please contact Matki for installation prices at heights above 2200mm.



### OPTIONS

HANDING		DOOR OPENING	
Left Hand - LH	Right Hand - RH	Outwards (Standard)	Inwards - INW
HANDLES			
Linear - LNR (Standard)		Traditional - TRAD	
Ⓢ Illustrious - IST		Ⓢ Engineer - ENG (Add £85 ex VAT)	
FRAME ACCENTS		£ EX. VAT	£ INC. VAT
None (Standard)		-	-
EPW Frame Accent Pack - FVP*		£515.00	£618.00
*Only available in Ⓢ finishes below from Autumn 2021			
FRAME FINISHES		£ EX. VAT	£ INC. VAT
Sliver/Chrome - SC (Standard)		-	-
Matt Black - MB (Ultra Bespoke Frames only)		£468.00	£561.60
Ⓢ Living Brass - LB		£400.00	£480.00
Ⓢ Polished Chrome - CP / Brushed Brass - BB		£500.00	£600.00
Ⓢ Polished Nickel - NP / Living Copper - LC		£693.00	£831.60
Ⓢ Brushed Nickel - NB / Aged Brass - AB		£827.00	£992.40
Ⓢ Polished Gold - MG / Black Chrome - XP		£850.00	£1,020.00
Ⓢ Brushed Gold - GB / Brushed Black Chrome - XB		£999.00	£1,198.80
Ⓢ finishes from Autumn 2021, for nickel and gold finishes prior to then please contact Matki			

BESPOKE (BES) & ULTRA BESPOKE (ULTR) OPTIONS	BES	ULTR
	Add Surcharges to BES/ULTR Prices	
Width changes up to dimensions listed	✓	✓
Width changes above max panel dims. listed <sup>1*</sup>	Add £100 per 100mm ex VAT	
Reduced height	✓	✓
Increased height per panel/door <sup>2*</sup>	Add £75 per 100mm ex VAT	
Glass Shaping: e.g. Angles, Cut Outs <sup>3</sup>	✗	✓
Circular Hole Handle		Add £115 ex VAT
<b>All Glass finish prices refer to whole product EPI</b>		
Tinted / Low Iron Glass Finish - see page 40		Add £320 ex VAT
Satin/Frosted Glass Finish		Add £375 ex VAT
Ultra Black Glass Finish		Add £660 ex VAT
Medium Frame (Autumn 2021) - see page 41	✓	✓
Ultra Bespoke Frames - see page 41 <sup>3</sup>	✗	✓

<sup>1</sup> B/C Panels only; always requires brace bar (add £126 ex VAT for SC, MB; £188 ex VAT for Ⓢ finishes) or ceiling bracket (add £90 ex VAT)

<sup>2</sup> Max 2.4 high with BES (standard frames), Max 3m with ULTR. Additional Hinge (£200 ex VAT) may be required.

<sup>3</sup> Require Measure and Installation

\* For special glass finishes in oversize dimensions, add 10% to Glass Finish surcharges for every 100mm of extra height and for every 100mm of extra width above maximum standard size product.

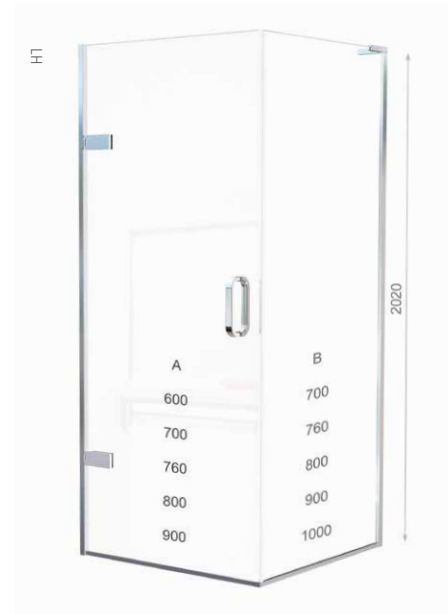
HOW TO ORDER

- Select CORNER DOOR and SIDE PANEL models from tables below
- Alternative standard door and panel combinations are available at the same price for each model size. The drawing opposite shows the standard panel sizes available
- Make choices from OPTIONS table, adding suffix codes to EPC CORNER DOOR code and surcharges to CORNER DOOR price; standard options will be supplied unless otherwise specified
- Bespoke (BES) and Ultra Bespoke (ULTR) CORNER DOOR and SIDE PANEL sizes are listed, please see the BESPOKE OPTIONS table and page 44 for more information

DIMENSIONS (MM)		PRICES	
<b>CORNER DOOR</b>	<b>A</b>	<b>£ EX. VAT</b>	<b>£ INC. VAT</b>
EPC600	572 – 587	£1,113.00	£1,335.60
EPC700	672 – 687	£1,126.00	£1,351.20
EPC760	732 – 747	£1,139.00	£1,366.80
EPC760BES	Up to 760mm	£1,336.00	£1,603.20
EPC760ULTR	Up to 760mm	£1,404.00	£1,684.80
EPC800	772 – 787	£1,148.00	£1,377.60
EPC900	872 – 887	£1,175.00	£1,410.00
EPC900BES	Up to 900mm	£1,341.00	£1,609.20
EPC900ULTR	Up to 900mm	£1,427.00	£1,712.40
<b>SIDE PANEL</b>	<b>B</b>	<b>£ EX. VAT</b>	<b>£ INC. VAT</b>
EPC700SP	669 – 684	£338.00	£405.60
EPC760SP	729 – 744	£343.00	£411.60
EPC800SP	769 – 784	£350.00	£420.00
EPC800SPBES	Up to 800mm	£670.00	£804.00
EPC800SPULTR	Up to 800mm	£887.00	£1,064.40
EPC900SP	869 – 884	£378.00	£453.60
EPC1000SP	969 – 984	£405.00	£486.00
EPC1000SPBES	Up to 1000mm	£711.00	£853.20
EPC1000SPULTR	Up to 1000mm	£993.00	£1,191.60

MATKI INSTALLATIONS	CODE	£ EX. VAT	£ INC. VAT
Measure	MS	£210.00	£252.00
Installation - Standard or Bespoke	INST	£525.00	£630.00
Measure and Installation	MSINST	£735.00	£882.00

See page 43. Measure is optional for Standard and Bespoke (BES) models but required for Ultra Bespoke (ULTR). Product and Installation prices may change after measure. For areas outside the UK mainland, please contact Matki for pricing. Please contact Matki for installation prices at heights above 2200mm.



OPTIONS

HANDLING	DOOR OPENING
Left Hand Corner - LH	Right Hand Corner - RH
	Outwards (Standard)
HANDLES	
Linear - LNR (Standard)	Traditional - TRAD
Ⓢ Illustrious - IST	Ⓢ Engineer - ENG (Add £85 ex VAT)

FRAME ACCENTS	£ EX. VAT	£ INC. VAT
None (Standard)	-	-
EPC Frame Accent Pack - FVP*	£275.00	£330.00

\*Only available in Ⓢ finishes below from Autumn 2021

FRAME FINISHES	£ EX. VAT	£ INC. VAT
Sliver/Chrome - SC (Standard)	-	-
Matt Black - MB (Ultra Bespoke Frames only)	£468.00	£561.60
Ⓢ Living Brass - LB	£675.00	£810.00
Ⓢ Polished Chrome - CP / Brushed Brass - BB	£800.00	£960.00
Ⓢ Polished Nickel - NP / Living Copper - LC	£984.00	£1,180.80
Ⓢ Brushed Nickel - NB / Aged Brass - AB	£1,113.00	£1,335.60
Ⓢ Polished Gold - MG / Black Chrome - XP	£1,129.00	£1,354.80
Ⓢ Brushed Gold - GB / Brushed Black Chrome - XB	£1,263.00	£1,515.60

Ⓢ finishes from Autumn 2021, for nickel and gold finishes prior to then please contact Matki. For Ⓢ Finish Surcharges on Ultra Bespoke Frames, please refer to page 41.

BESPOKE (BES) & ULTRA BESPOKE (ULTR) OPTIONS	BES	ULTR
	Add Surcharges to BES/ULTR Prices	
Width changes up to dimensions listed	✓	✓
Width changes above max panel dims. listed <sup>1*</sup>	Add £100 per 100mm ex VAT	
Reduced height	✓	✓
Increased height per panel/door <sup>2*</sup>	Add £75 per 100mm ex VAT	
Glass Shaping: e.g. Angles, Cut Outs <sup>3</sup>	✗	✓
Circular Hole Handle	Add £115 ex VAT	
<b>All Glass finish prices refer to whole product EPC + SP</b>		
Tinted / Low Iron Glass Finish - see page 40	Add £320 ex VAT	
Satin/Frosted Glass Finish	Add £375 ex VAT	
Ultra Black Glass Finish	Add £660 ex VAT	
Ultra Bespoke Frames - see page 41 <sup>3</sup>	✗	✓

<sup>1</sup> B Panel only; always requires brace bar (add £126 ex VAT for SC,MB; £188 ex VAT for Ⓢ finishes) or ceiling bracket (add £90 ex VAT).

<sup>2</sup> Max 2.4m high with BES (standard frames), Max 3m with ULTR. Additional Hinge (£200 ex VAT) may be required.

<sup>3</sup> Require Measure and Installation.

\* For special glass finishes in oversize dimensions, add 10% to Glass Finish surcharges for every 100mm of extra height and width above maximum standard size panels.



## 56. EPWC: HINGED DOOR FROM WALL AND INLINE PANEL FOR CORNER

### HOW TO ORDER

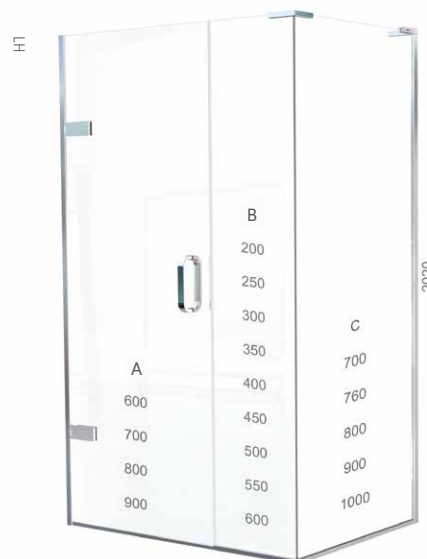
- Select CORNER DOOR and SIDE PANEL models from tables below
- Alternative standard door and panel combinations are available at the same price for each model size. The drawing opposite shows the standard panel sizes available
- Make choices from OPTIONS table, adding suffix codes to EPWC CORNER DOOR code and surcharges to CORNER DOOR price; standard options will be supplied unless otherwise specified
- Bespoke (BES) and Ultra Bespoke (ULTR) CORNER DOOR and SIDE PANEL sizes are listed, please see the BESPOKE OPTIONS table and page 44 for more information
- Also available on request with door hinged off inline panel (B), price on application

DIMENSIONS (MM)		PRICES			
CORNER DOOR	A + B	A	B	£ EX. VAT	£ INC. VAT
EPWC800	770 – 785	600	200	£1,399.00	£1,678.80
EPWC850	820 – 835	600	250	£1,402.00	£1,682.40
EPWC900	870 – 885	700	200	£1,405.00	£1,686.00
EPWC950	920 – 935	700	250	£1,412.00	£1,694.40
EPWC1000	970 – 985	800	200	£1,418.00	£1,701.60
EPWC1000BES	Up to 1000mm			£1,607.00	£1,928.40
EPWC1000ULTR	Up to 1000mm			£1,793.00	£2,151.60
EPWC1050	1020 – 1035	800	250	£1,425.00	£1,710.00
EPWC1100	1070 – 1085	900	200	£1,448.00	£1,737.60
EPWC1150	1120 – 1135	900	250	£1,455.00	£1,746.00
EPWC1200	1170 – 1185	800	400	£1,471.00	£1,765.20
EPWC1250	1220 – 1235	800	450	£1,481.00	£1,777.20
EPWC1300	1270 – 1285	900	400	£1,501.00	£1,801.20
EPWC1300BES	Up to 1300mm			£1,757.00	£2,108.40
EPWC1300ULTR	Up to 1300mm			£1,956.00	£2,347.20
EPWC1350	1320 – 1335	900	450	£1,511.00	£1,813.20
EPWC1400	1370 – 1385	900	500	£1,518.00	£1,821.60
EPWC1450	1420 – 1435	900	550	£1,531.00	£1,837.20
EPWC1500	1470 – 1485	900	600	£1,545.00	£1,854.00
EPWC1500BES	Up to 1500mm			£1,775.00	£2,130.00
EPWC1500ULTR	Up to 1500mm			£1,997.00	£2,396.40

SIDE PANEL	C	£ EX. VAT	£ INC. VAT
EPWC700SP	665 – 680	£345.00	£414.00
EPWC760SP	725 – 740	£350.00	£420.00
EPWC800SP	765 – 780	£356.00	£427.20
EPWC800SPBES	Up to 800mm	£730.00	£876.00
EPWC800SPULTR	Up to 800mm	£992.00	£1,190.40
EPWC900SP	865 – 880	£384.00	£460.80
EPWC1000SP	965 – 980	£410.00	£492.00
EPWC1000SPBES	Up to 1000mm	£816.00	£979.20
EPWC1000SPULTR	Up to 1000mm	£1,090.00	£1,308.00

MATKI INSTALLATIONS	CODE	£ EX. VAT	£ INC. VAT
Measure	MS	£210.00	£252.00
Installation – Standard or Bespoke	INST	£604.00	£724.80
Measure and Installation	MSINST	£814.00	£976.80

See page 43. Measure is optional for Standard and Bespoke (BES) models but required for Ultra Bespoke (ULTR). Product and Installation prices may change after measure. For areas outside the UK mainland, please contact Matki for pricing. Please contact Matki for installation prices at heights above 2200mm.



### OPTIONS

#### HANDLING

Left Hand Corner – LH Right Hand Corner – RH Outwards (Standard) Inwards – INW\*  
\*INW from Autumn 2021, available in Ultra Bespoke prior to then

#### DOOR OPENING

#### HANDLES

Linear – LNR (Standard) Traditional – TRAD  
 ⓘ Illustrious – IST ⓘ Engineer – ENG (Add £85 ex VAT)

#### FRAME ACCENTS

	£ EX. VAT	£ INC. VAT
None (Standard)	-	-
EPWC Frame Accent Pack – FVP*	£515.00	£618.00

\*Only available in ⓘ finishes below from Autumn 2021

#### FRAME FINISHES

	£ EX. VAT	£ INC. VAT
Sliver/Chrome – SC (Standard)	-	-
Matt Black – MB (Ultra Bespoke Frames only)	£468.00	£561.60
ⓘ Living Brass – LB	£675.00	£810.00
ⓘ Polished Chrome – CP / Brushed Brass – BB	£800.00	£960.00
ⓘ Polished Nickel – NP / Living Copper – LC	£984.00	£1,180.80
ⓘ Brushed Nickel – NB / Aged Brass – AB	£1,113.00	£1,335.60
ⓘ Polished Gold – MG / Black Chrome – XP	£1,129.00	£1,354.80
ⓘ Brushed Gold – GB / Brushed Black Chrome – XB	£1,263.00	£1,515.60

ⓘ finishes from Autumn 2021, for nickel and gold finishes prior to then please contact Matki.

For ⓘ Finish Surcharges on Ultra Bespoke Frames, please refer to page 41.

#### BESPOKE (BES) & ULTRA BESPOKE (ULTR) OPTIONS

	BES	ULTR
Width changes up to dimensions listed	✓	✓
Width changes above max panel dims. listed <sup>1*</sup>	Add £100 per 100mm ex VAT	
Reduced height	✓	✓
Increased height per panel/door <sup>2*</sup>	Add £75 per 100mm ex VAT	
Glass Shaping: e.g. Angles, Cut Outs <sup>3</sup>	✗	✓
Circular Hole Handle	Add £115 ex VAT	

#### All Glass finish prices refer to whole product EPWC + SP

Tinted / Low Iron Glass Finish – see page 40	Add £350 ex VAT
Satin/Frosted Glass Finish	Add £440 ex VAT
Ultra Black Glass Finish	Add £790 ex VAT
Ultra Bespoke Frames – see page 41 <sup>3</sup>	✗ ✓

<sup>1</sup> B/C Panels only; always requires brace bar (add £126 ex VAT for SC, MB; £188 ex VAT for ⓘ finishes) or ceiling bracket (add £90 ex VAT).

<sup>2</sup> Max 2.4 high with BES (standard frames), Max 3m with ULTR. Additional Hinge (£200 ex VAT) may be required.

<sup>3</sup> Require Measure and Installation.

\* For special glass finishes in oversize dimensions, add 10% to Glass Finish surcharges for every 100mm of extra height and for every 100mm of extra width above maximum standard size product.



## 58. EPIC: EAUZONE HINGED DOOR WITH HINGE PANEL AND INLINE PANEL FOR CORNER

### HOW TO ORDER

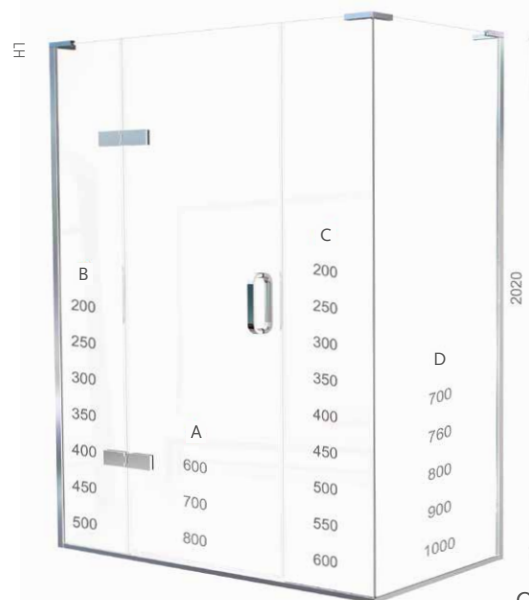
- Select CORNER DOOR and SIDE PANEL models from tables below
- Alternative standard door and panel combinations are available at the same price for each model size. The drawing opposite shows the standard panel sizes available
- Make choices from OPTIONS table, adding suffix codes to EPIC CORNER DOOR code and surcharges to CORNER DOOR price; standard options will be supplied unless otherwise specified
- Bespoke (BES) and Ultra Bespoke (ULTR) CORNER DOOR and SIDE PANEL sizes are listed, please see the BESPOKE OPTIONS table and page 44 for more information

DIMENSIONS (MM)		PRICES				
DOOR	A + B + C	A	B	C	£ EX. VAT	£ INC. VAT
EPIC1000	967 - 982	600	200	200	£1,879.00	£2,254.80
EPIC1050	1017 - 1032	600	250	200	£1,886.00	£2,263.20
EPIC1100	1067 - 1082	700	200	200	£1,892.00	£2,270.40
EPIC1150	1117 - 1132	700	250	200	£1,904.00	£2,284.80
EPIC1200	1167 - 1182	800	200	200	£1,920.00	£2,304.00
EPIC1250	1217 - 1232	800	250	200	£1,932.00	£2,318.40
EPIC1300	1267 - 1282	700	200	400	£1,948.00	£2,337.60
EPIC1300BES	Up to 1300mm				£2,238.00	£2,685.60
EPIC1300ULTR	Up to 1300mm				£2,674.00	£3,208.80
EPIC1350	1317 - 1332	800	300	250	£1,960.00	£2,352.00
EPIC1400	1367 - 1382	800	200	400	£1,976.00	£2,371.20
EPIC1450	1417 - 1432	800	300	350	£1,989.00	£2,386.80
EPIC1500	1467 - 1482	700	400	400	£2,002.00	£2,402.40
EPIC1550	1517 - 1532	800	350	400	£2,018.00	£2,421.60
EPIC1600	1567 - 1582	800	400	400	£2,029.00	£2,434.80
EPIC1600BES	Up to 1600mm				£2,387.00	£2,864.40
EPIC1600ULTR	Up to 1600mm				£2,836.00	£3,403.20
EPIC1650	1617 - 1632	800	400	450	£2,041.00	£2,449.20
EPIC1700	1667 - 1682	800	450	450	£2,058.00	£2,469.60
EPIC1750	1717 - 1732	800	500	450	£2,070.00	£2,484.00
EPIC1800	1767 - 1782	800	500	500	£2,086.00	£2,503.20
EPIC1850	1817 - 1832	800	500	550	£2,095.00	£2,514.00
EPIC1900	1867 - 1882	800	500	600	£2,113.00	£2,535.60
EPIC1900BES	Up to 1900mm				£2,535.00	£3,042.00
EPIC1900ULTR	Up to 1900mm				£2,996.00	£3,595.20

SIDE PANEL	D	£ EX. VAT	£ INC. VAT
EPIC700SP	665 - 680	£345.00	£414.00
EPIC760SP	725 - 740	£350.00	£420.00
EPIC800SP	765 - 780	£356.00	£427.20
EPIC800SPBES	Up to 800mm	£730.00	£876.00
EPIC800SPULTR	Up to 800mm	£992.00	£1,190.40
EPIC900SP	865 - 880	£384.00	£460.80
EPIC1000SP	965 - 980	£410.00	£492.00
EPIC1000SPBES	Up to 1000mm	£816.00	£979.20
EPIC1000SPULTR	Up to 1000mm	£1,090.00	£1,308.00

MATKI INSTALLATIONS	CODE	£ EX. VAT	£ INC. VAT
Measure	MS	£210.00	£252.00
Installation - Standard or Bespoke	INST	£683.00	£819.60
Measure and Installation	MSINST	£893.00	£1,071.60

See page 43. Measure is optional for Standard and Bespoke (BES) models but required for Ultra Bespoke (ULTR). Product and Installation prices may change after measure. For areas outside the UK mainland, please contact Matki for pricing. Please contact Matki for installation prices at heights above 2200mm.



### HANDING

Left Hand Corner - LH    Right Hand Corner - RH    Door Opening

Outwards (Standard)    Inwards - INW

### HANDLES

Linear - LNR (Standard)    Traditional - TRAD

Ⓢ Illustrious - IST    Ⓢ Engineer - ENG (Add £85 ex VAT)

### FRAME ACCENTS

None (Standard)    £ EX. VAT    £ INC. VAT

EPIC Frame Accent Pack - FVP\*    £755.00    £906.00

\*Only available in Ⓢ finishes below from Autumn 2021

### FRAME FINISHES

Sliver/Chrome - SC (Standard)    £ EX. VAT    £ INC. VAT

Matt Black - MB (Ultra Bespoke Frames only)    £468.00    £561.60

Ⓢ Living Brass - LB    £400.00    £480.00

Ⓢ Polished Chrome - CP / Brushed Brass - BB    £500.00    £600.00

Ⓢ Polished Nickel - NP / Living Copper - LC    £693.00    £831.60

Ⓢ Brushed Nickel - NB / Aged Brass - AB    £827.00    £992.40

Ⓢ Polished Gold - MG / Black Chrome - XP    £850.00    £1,020.00

Ⓢ Brushed Gold - GB / Brushed Black Chrome - XB    £999.00    £1,198.80

Ⓢ finishes from Autumn 2021, for nickel and gold finishes prior to then please contact Matki

### BESPOKE (BES) & ULTRA BESPOKE (ULTR) OPTIONS

	BES	ULTR
Width changes up to dimensions listed	✓	✓
Width changes above max panel dims. listed <sup>1*</sup>	Add £100 per 100mm ex VAT	
Reduced height	✓	✓
Increased height per panel/door <sup>2*</sup>	Add £75 per 100mm ex VAT	
Glass Shaping: e.g. Angles, Cut Outs <sup>3</sup>	✗	✓
Circular Hole Handle	Add £115 ex VAT	

### All Glass finish prices refer to whole product EPIC + SP

Tinted / Low Iron Glass Finish - see page 40	Add £410 ex VAT	
Satin/Frosted Glass Finish	Add £495 ex VAT	
Ultra Black Glass Finish	Add £940 ex VAT	
Medium Frame - see page 41	✓	✓
Ultra Bespoke Frames - see page 41 <sup>3</sup>	✗	✓

<sup>1</sup> B/C/D Panels only; always requires brace bar (add £126 ex VAT for SC,MB; £188 ex VAT for Ⓢ finishes) or ceiling bracket (add £90 ex VAT).

<sup>2</sup> Max 2.4m high with BES (standard frames), Max 3m with ULTR. Additional Hinge (£200 ex VAT) may be required.

<sup>3</sup> Require Measure and Installation.

\* For special glass finishes in oversize dimensions, add 10% to Glass Finish surcharges for every 100mm of extra height and for every 100mm of extra width above maximum standard size product.



HOW TO ORDER

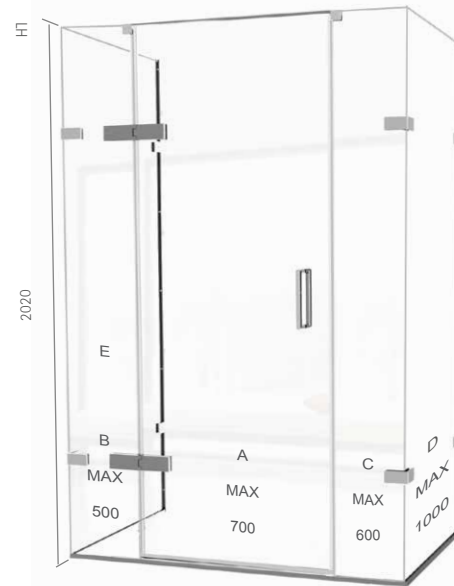
- Select Bespoke THREE-SIDED DOOR and SIDE PANEL models from tables below
- Make choices from OPTIONS table, adding suffix codes to EPIT CORNER DOOR code and surcharges to THREE-SIDED DOOR price; Standard options will be supplied unless otherwise specified
- Bespoke (BES) and Ultra Bespoke (ULTR) THREE-SIDED DOOR and SIDE PANEL sizes are listed, please see the BESPOKE OPTIONS table and page 44 for more information

DIMENSIONS (MM)				PRICES		
CORNER DOOR	A + B + C	A	B	C	£ EX. VAT	£ INC. VAT
EPIT1300BES	Up to 1300mm	Max: 700	500	600	£2,587.00	£3,104.40
EPIT1300ULTR	Up to 1300mm	Max: 700	500	600	£3,187.00	£3,824.40
EPIT1600BES	Up to 1600mm	Max: 700	500	600	£2,708.00	£3,249.60
EPIT1600ULTR	Up to 1600mm	Max: 700	500	600	£3,489.00	£4,186.80
EPIT1800BES	Up to 1800mm	Max: 700	500	600	£2,829.00	£3,394.80
EPIT1800ULTR	Up to 1800mm	Max: 700	500	600	£3,634.00	£4,360.80

SIDE PANEL (ADD 2)	D + E	£ EX. VAT	£ INC. VAT
EPIT800SPBES	Up to 800mm	£730.00	£876.00
EPIT800SPULTR	Up to 800mm	£992.00	£1,190.40
EPIT1000SPBES	Up to 1000mm	£816.00	£979.20
EPIT1000SPULTR	Up to 1000mm	£1,090.00	£1,308.00

MATKI INSTALLATIONS	CODE	£ EX. VAT	£ INC. VAT
Measure	MS	£210.00	£252.00
Installation - Standard or Bespoke	INST	£761.00	£913.20
Measure and Installation	MSINST	£971.00	£1,165.20

See page 43. Measure is optional for Standard and Bespoke (BES) models but required for Ultra Bespoke (ULTR). Product and Installation prices may change after measure. For areas outside the UK mainland, please contact Matki for pricing. Please contact Matki for installation prices at heights above 2200mm.



OPTIONS

HANDLING	DOOR OPENING
Left Hand - LH	Right Hand - RH
	Outwards (Standard) Inwards - INW

HANDLES
Linear - LNR (Standard)
Traditional - TRAD
Ⓢ Illustrious - IST
Ⓢ Engineer - ENG (Add £85 ex VAT)

FRAME FINISHES	£ EX. VAT	£ INC. VAT
Sliver/Chrome - SC (Standard)	-	-
Matt Black - MB (Ultra Bespoke Frames only)	£468.00	£561.60
Ⓢ Living Brass - LB	£400.00	£480.00
Ⓢ Polished Chrome - CP / Brushed Brass - BB	£500.00	£600.00
Ⓢ Polished Nickel - NP / Living Copper - LC	£693.00	£831.60
Ⓢ Brushed Nickel - NB / Aged Brass - AB	£827.00	£992.40
Ⓢ Polished Gold - MG / Black Chrome - XP	£850.00	£1,020.00
Ⓢ Brushed Gold - GB / Brushed Black Chrome - XB	£999.00	£1,198.80

Ⓢ finishes from Autumn 2021, for nickel and gold finishes prior to then please contact Matki

BESPOKE (BES) & ULTRA BESPOKE (ULTR) OPTIONS	BES	ULTR
Width changes up to dimensions listed	✓	✓
Width changes above max panel dims. listed <sup>1*</sup>	Add £100 per 100mm ex VAT	
Reduced height	✓	✓
Increased height per panel/door <sup>2*</sup>	Add £75 per 100mm ex VAT	
Glass Shaping: e.g. Angles, Cut Outs <sup>3</sup>	✗	✓
Circular Hole Handle	Add £115 ex VAT	
<b>All Glass finish prices refer to whole product EPIT + 2 x SP</b>		
Tinted / Low Iron Glass Finish - see page 40	Add £465 ex VAT	
Satin/Frosted Glass Finish	Add £550 ex VAT	
Ultra Black Glass Finish	Add £1,085 ex VAT	
Medium Frame (Autumn 2021) - see page 41	✓	✓
Ultra Bespoke Frames - see page 41 <sup>3</sup>	✗	✓

<sup>1</sup> B/C/D/E Panels only; may require brace bars or ceiling brackets.

<sup>2</sup> Max 2.4m high with BES (standard frames), Max 3m with ULTR. Additional hinge (£200 ex VAT), wall brackets (£90 ex VAT) and corner brackets (£180 ex VAT) may be required.

<sup>3</sup> Require Measure and Installation.

\* For special glass finishes in oversize dimensions, add 10% to Glass Finish surcharges for every 100mm of extra height and width above maximum standard size panels.

## 60. EHCL: HINGED DOOR WITH HINGE PANEL AND RADIUS 20 PANEL FOR CORNER

### HOW TO ORDER

- Select CORNER DOOR and SIDE PANEL models from tables below
- Alternative standard door and panel combinations are available at the same price for each model size. The drawing opposite shows the standard panel sizes available
- Make choices from OPTIONS table, adding suffix codes to EHCL CORNER DOOR code and surcharges to CORNER DOOR price; standard options will be supplied unless otherwise specified
- Bespoke (BES) and Ultra Bespoke (ULTR) CORNER DOOR sizes are listed, please see the BESPOKE OPTIONS table and page 44 for more information

DIMENSIONS (MM)					PRICES	
CORNER DOOR	A+B+C	A	B	C	£ EX. VAT	£ INC. VAT
EHCL1200	1170 – 1185	700	250	250	£1,621.00	£1,945.20
EHCL1300	1270 – 1285	700	350	250	£1,650.00	£1,980.00
EHCL1300BES	Up to 1300mm			250	£1,986.00	£2,383.20
EHCL1300ULTR	Up to 1300mm			250	£2,219.00	£2,662.80
EHCL1400	1370 – 1385	700	450	250	£1,679.00	£2,014.80
EHCL1500	1470 – 1485	700	550	250	£1,707.00	£2,048.40
EHCL1600	1570 – 1585	800	550	250	£1,735.00	£2,082.00
EHCL1600BES	Up to 1600mm			250	£2,136.00	£2,563.20
EHCL1600ULTR	Up to 1600mm			250	£2,382.00	£2,858.40

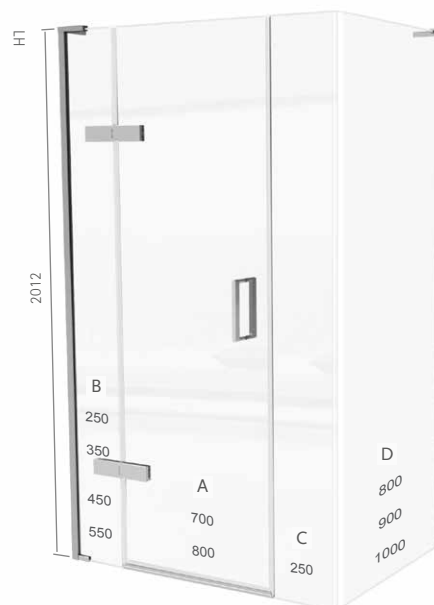
  

SIDE PANEL	D	£ EX. VAT	£ INC. VAT
EWL800SP	770 – 785	£1,389.00	£1,666.80
EWL900SP	870 – 885	£1,446.00	£1,735.20
EWL1000SP	970 – 985	£1,474.00	£1,768.80

EWL Side Panel is not available in Bespoke or Ultra Bespoke

MATKI INSTALLATIONS	CODE	£ EX. VAT	£ INC. VAT
Measure	MS	£210.00	£252.00
Installation – Standard or Bespoke	INST	£683.00	£819.60
Measure and Installation	MSINST	£893.00	£1,071.60

See page 43. Measure is optional for Standard and Bespoke (BES) models but required for Ultra Bespoke (ULTR). Product and Installation prices may change after measure. For areas outside the UK mainland, please contact Matki for pricing.



### OPTIONS

HANDLING	DOOR OPENING
Left Hand Corner - LH	Right Hand Corner - RH
	Outwards (Standard) Inwards - INW

HANDLES
Linear - LNR (Standard)
Traditional - TRAD
Ⓢ Illustrious - IST
Ⓢ Engineer - ENG (Add £85 ex VAT)

FRAME ACCENTS	£ EX. VAT	£ INC. VAT
None (Standard)	-	-
EHCL Frame Accent Pack - FVP*	£515.00	£618.00

\*Only available in Ⓢ finishes below from Autumn 2021

FRAME FINISHES	£ EX. VAT	£ INC. VAT
Sliver/Chrome - SC (Standard)	-	-
Matt Black - MB (Ultra Bespoke Frames only)	£468.00	£561.60
Ⓢ Living Brass - LB	£400.00	£480.00
Ⓢ Polished Chrome - CP / Brushed Brass - BB	£500.00	£600.00
Ⓢ Polished Nickel - NP / Living Copper - LC	£693.00	£831.60
Ⓢ Brushed Nickel - NB / Aged Brass - AB	£827.00	£992.40
Ⓢ Polished Gold - MG / Black Chrome - XP	£850.00	£1,020.00
Ⓢ Brushed Gold - GB / Brushed Black Chrome - XB	£999.00	£1,198.80

Ⓢ finishes from Autumn 2021, for nickel and gold finishes prior to then please contact Matki

BESPOKE (BES) & ULTRA BESPOKE (ULTR) OPTIONS	BES	ULTR
	Add Surcharges to BES/ULTR Prices	
Width changes up to dimensions listed	✓	✓
Width changes above max panel dims. listed <sup>1</sup>	Add £100 ex VAT per 100mm	
Glass Shaping: e.g. Angles, Cut Outs <sup>2</sup>	✗	✓
Circular Hole Handle	Add £115 ex VAT	
Medium Frame (Autumn 2021) - see page 41 <sup>3</sup>	✓	✓

<sup>1</sup> A Panel only; always requires brace bar (add £126 ex VAT for SC,MB; £188 ex VAT for Ⓢ finishes).

<sup>2</sup> Only available on A Hinge Panel and B Door.

<sup>3</sup> Walls must be plumb and dimensions should be carefully considered as EWL side panel not available Bespoke.

HOW TO ORDER

- Select CORNER DOOR and SIDE PANEL Models from tables below
- Alternative standard door and panel combinations are available at the same price for each model size. The drawing opposite shows the standard panel sizes available
- Make choices from OPTIONS table, adding suffix codes to EWCL CORNER DOOR code and surcharges to CORNER DOOR price; standard options will be supplied unless otherwise specified
- Bespoke (BES) and Ultra Bespoke (ULTR) CORNER DOOR sizes are listed, please see the BESPOKE OPTIONS table and page 44 for more information

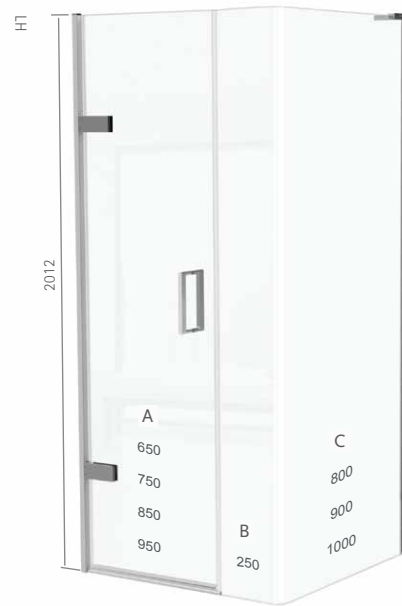
DIMENSIONS (MM)			PRICES		
CORNER DOOR	A+B	A	B	£ EX. VAT	£ INC. VAT
EWCL900	870 – 885	650	250	£1,400.00	£1,680.00
EWCL1000	970 – 985	750	250	£1,416.00	£1,699.20
EWCL1100	1070 – 1085	850	250	£1,437.00	£1,724.40
EWCL1200	1170 – 1185	950	250	£1,474.00	£1,768.80
EWCL1200BES	Up to 1200mm		250	£1,772.00	£2,126.40
EWCL1200ULTR	Up to 1200mm		250	£1,825.00	£2,190.00

SIDE PANEL	C	£ EX. VAT	£ INC. VAT
EWL800SP	770 – 785	£1,389.00	£1,666.80
EWL900SP	870 – 885	£1,446.00	£1,735.20
EWL1000SP	970 – 985	£1,474.00	£1,768.80

EWL Side Panel is not available in bespoke or ultra bespoke

MATKI INSTALLATIONS	CODE	£ EX. VAT	£ INC. VAT
Measure	MS	£210.00	£252.00
Installation - Standard or Bespoke	INST	£604.00	£724.80
Measure and Installation	MSINST	£814.00	£976.80

See page 43. Measure is optional for Standard and Bespoke (BES) models but required for Ultra Bespoke (ULTR). Product and Installation prices may change after measure. For areas outside the UK mainland, please contact Matki for pricing.



OPTIONS

HANDLING	DOOR OPENING
Left Hand Corner - LH	Right Hand Corner - RH
Outwards (Standard)	Inwards - INW*

\*INW from Autumn 2021, available in Ultra Bespoke prior to then

HANDLES
Linear - LNR (Standard)
Traditional - TRAD
Ⓢ Illustrious - IST
Ⓢ Engineer - ENG (Add £85 ex VAT)

FRAME ACCENTS	£ EX. VAT	£ INC. VAT
None (Standard)	-	-
EWCL Frame Accent Pack - FVP*	£275.00	£330.00

\*Only available in Ⓢ finishes below from Autumn 2021

FRAME FINISHES	£ EX. VAT	£ INC. VAT
Sliver/Chrome - SC (Standard)	-	-
Matt Black - MB (Ultra Bespoke Frames only)	£468.00	£561.60
Ⓢ Living Brass - LB	£675.00	£810.00
Ⓢ Polished Chrome - CP / Brushed Brass - BB	£800.00	£960.00
Ⓢ Polished Nickel - NP / Living Copper - LC	£984.00	£1,180.80
Ⓢ Brushed Nickel - NB / Aged Brass - AB	£1,113.00	£1,335.60
Ⓢ Polished Gold - MG / Black Chrome - XP	£1,129.00	£1,354.80
Ⓢ Brushed Gold - GB / Brushed Black Chrome - XB	£1,263.00	£1,515.60

Ⓢ finishes from Autumn 2021, for nickel and gold finishes prior to then please contact Matki

BESPOKE (BES) & ULTRA BESPOKE (ULTR) OPTIONS	BES	ULTR
	Add Surcharges to BES/ULTR Prices	
Width changes up to dimensions listed	✓	✓
Glass Shaping: e.g. Angles <sup>1</sup>	✗	✓
Circular Hole Handle	Add £115 ex VAT	

<sup>1</sup> Only available on A Door.



## 62. EPQ: QUINTESSE DESIGN WITH HINGED DOOR

### HOW TO ORDER

- Select QUINTESSE model from table below
- Make choices from OPTIONS table, adding suffix codes to EPQ QUINTESSE code and surcharges to price; standard options will be supplied unless otherwise specified
- Bespoke (BES) and Ultra Bespoke (ULTR) RECESS sizes are listed, please see the BESPOKE OPTIONS table and page 44 for more information

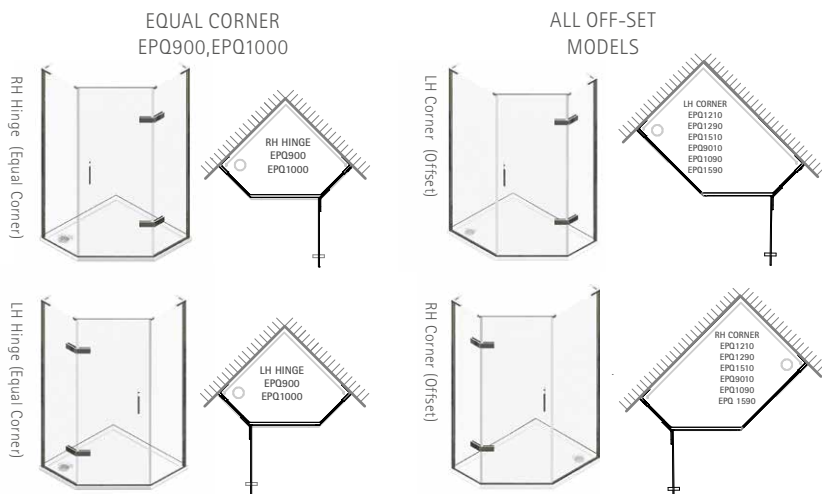
DIMENSIONS (MM)			PRICES		
CORNER	HINGE SIDE	CLOSURE SIDE	DIAGONAL	£ EX. VAT	£ INC. VAT
EPQ900*	868 - 883	868 - 883	872 - 893	£1,944.00	£2,332.80
EPQ9010	868 - 883	968 - 983	943 - 964	£1,971.00	£2,365.20
EPQ1000*	968 - 983	968 - 983	1014 - 1035	£2,000.00	£2,400.00
EPQ1090	968 - 983	868 - 883	943 - 964	£1,973.00	£2,367.60
EPQ1000BES	Up to 1000mm	Up to 1000mm		£2,347.00	£2,816.40
EPQ1000ULTR	Up to 1000mm	Up to 1000mm		£2,602.00	£3,122.40
EPQ1290*	868 - 883	1168 - 1183	1085 - 1106	£2,050.00	£2,460.00
EPQ1210	968 - 983	1168 - 1183	1156 - 1177	£2,079.00	£2,494.80
EPQ1590*	868 - 883	1468 - 1483	1297 - 1318	£2,138.00	£2,565.60
EPQ1510	968 - 983	1468 - 1483	1368 - 1389	£2,167.00	£2,600.40
EPQ1510BES	Up to 1000mm	Up to 1500mm		£2,616.00	£3,139.20
EPQ1510ULTR	Up to 1000mm	Up to 1500mm		£2,855.00	£3,426.00

\*Recommended Shower Tray CLQ (see page 83), for all other models MP M-T-M (see page 79).

MATKI INSTALLATIONS	CODE	£ EX. VAT	£ INC. VAT
Measure	MS	£210.00	£252.00
Installation - Standard or Bespoke	INST	£604.00	£724.80
Measure and Installation	MSINST	£814.00	£976.80

See page 43. Measure is optional for Standard and Bespoke (BES) models but required for Ultra Bespoke (ULTR). Product and Installation prices may change after measure. For areas outside the UK mainland, please contact Matki for pricing. Please contact Matki for installation prices at heights above 2200mm.

### CONFIGURATIONS & HANDING



If ordering models EPQ900/1000 please state LH or RH hinge. If ordering models EPQ 9010/1290/1210/1590/1510/1090 please state LH or RH Corner. Door hinges from narrower panel on all models except EPQ1090



### OPTIONS

#### HANDING - CORNER

Left Hand - LH  
Right Hand - RH

#### HANDING - OFFSET CORNER

Left Hand Corner - LH  
Right Hand Corner - RH

#### DOOR OPENING

Outwards (Standard)

#### HANDLES

Linear - LNR (Standard)  
Curved - CRV

Traditional - TRAD

#### FRAME FINISHES

Silver/Chrome - SC (Standard)

£ EX. VAT £ INC. VAT

For special finish options, please contact Matki.

BESPOKE (BES) & ULTRA BESPOKE (ULTR) OPTIONS	BES	ULTR
Width changes up to dimensions listed	✓	✓
Width changes above max panel dims. listed <sup>1*</sup>	Add £100 ex VAT per 100mm	
Reduced height	Add £395 ex VAT	
Increased height per panel/door <sup>2†*</sup>	Add £75 ex VAT per 100mm	
Glass Shaping: e.g. Angles, Cut Outs <sup>3</sup>	✗	✓
Circular Hole Handle		Add £115 ex VAT
<b>All Glass finish prices refer to whole product EPQ.</b>		
Tinted / Low Iron Glass Finish - see page 40	Add £320 ex VAT	
Satin/Frosted Glass Finish	Add £375 ex VAT	
Ultra Black Glass Finish	Add £735 ex VAT	
Ultra Bespoke Frames - see page 41 <sup>3</sup>	✗	✓

<sup>1</sup> B/C Panels only; door opening must stay 695 unless B and C panels run floor to ceiling (requires Measure and Installation).

<sup>2</sup> Max 2.4 high with BES (standard frames), Max 3m with ULTR. Additional Hinge (£200 ex VAT) may be required.

<sup>3</sup> Require Measure and Installation.

<sup>†</sup> First add £395 ex VAT if bespoke height door required.

\* For special glass finishes in oversize dimensions, add 10% to Glass Finish surcharges for every 100mm of extra height or width above maximum standard size panels.



## HOW TO ORDER

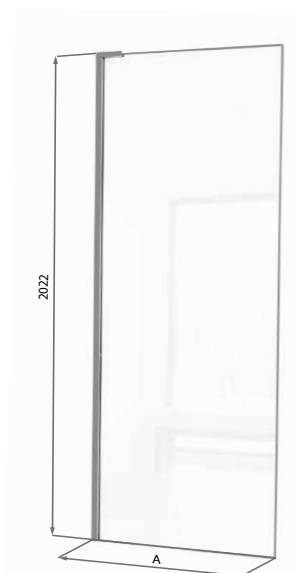
- Select Wet Room Panel Size
- Make choices from OPTIONS table, adding suffix codes to EWFP code and surcharges to EWFP price; standard options will be supplied unless otherwise specified
- Bespoke (BES) EWFP sizes are listed, please see the BESPOKE OPTIONS table and page 44 for more information

DIMENSIONS (MM)		PRICES	
EWFP	A	£ EX. VAT	£ INC. VAT
EWFP200	165 - 180	£977.00	£1,172.40
EWFP300	265 - 280	£1,019.00	£1,222.80
EWFP400	365 - 380	£1,062.00	£1,274.40
EWFP500	465 - 480	£1,104.00	£1,324.80
EWFP500BES	Up to 500mm	£1,300.00	£1,560.00
EWFP600	565 - 580	£1,146.00	£1,375.20
EWFP700	665 - 680	£1,189.00	£1,426.80
EWFP760	725 - 740	£1,215.00	£1,458.00
EWFP800	765 - 780	£1,231.00	£1,477.20
EWFP900*	865 - 880	£1,274.00	£1,528.80
EWFP1000*	965 - 980	£1,316.00	£1,579.20
EWFP1100*	1065 - 1080	£1,358.00	£1,629.60
EWFP1100BES	Up to 1100mm	£1,614.00	£1,936.80
EWFP1200*	1165 - 1180	£1,534.00	£1,840.80
EWFP1300	1265 - 1280	£1,598.00	£1,917.60
EWFP1400	1365 - 1380	£1,638.00	£1,965.60
EWFP1500	1465 - 1480	£1,679.00	£2,014.80
EWFP1500BES	Up to 1500mm	£2,109.00	£2,530.80

\*Available as standard with choice of Towel Rail, see page 37 for Towel Rail codes and prices. EWFP1200 and upwards come with a wall brace bar

MATKI INSTALLATIONS	CODE	£ EX. VAT	£ INC. VAT
Measure	MS	£210.00	£252.00
Installation - Standard or Bespoke up to 900mm wide	INST	£368.00	£441.60
Installation - Standard or Bespoke above 900mm wide	INST	£447.00	£536.40
Measure and Installation up to 900mm	MSINST	£578.00	£693.60
Measure and Installation above 900mm	MSINST	£657.00	£788.40

See page 43. Measure is optional for Standard and Bespoke (BES) models. Product and Installation prices may change after measure. For areas outside the UK mainland, please contact Matki for pricing. Please contact Matki for installation prices at heights above 2200mm.



## OPTIONS

## HANDING

Left Hand - LH

Right Hand - RH

## WALL FRAME TYPES

Standard Frame

Medium Frame - MED\*

\*Reduces adjustment range A max dimension by 5mm.

## FRAME FINISHES

	£ EX. VAT	£ INC. VAT
Ⓢ Polished Chrome - CP (Standard)/ Brushed Brass - BB	-	-
Ⓢ Living Brass	-£50.00	-£60.00
Ⓢ Polished Nickel - NP / Living Copper - LC	£123.00	£147.60
Ⓢ Brushed Nickel - NB / Aged Brass - AB	£206.00	£247.20
Ⓢ Polished Gold - MG / Black Chrome - XP	£215.00	£258.00
Ⓢ Brushed Gold - GB / Brushed Black Chrome - XB	£305.00	£366.00

## BESPOKE (BES) &amp; ULTRA BESPOKE (ULTR) OPTIONS

## BES

Add Surcharges to BES Prices

Width change up to dimensions listed	✓
Width change above max panel dims. listed *	Add £110 ex VAT per 100mm
Reduced height	✓
Increased height <sup>1</sup> *	Add £95 ex VAT per 100mm
Holes for Towel Rail Fitting, see page 37	Add £60 ex VAT
Tinted / Low Iron Glass Finish <sup>2</sup> (see page 40)	Add £305 ex VAT
Satin/Frosted Glass Finish <sup>2</sup>	Add £350 ex VAT
Ultra Black Glass Finish <sup>2</sup>	Add £580 ex VAT

\* Panels attaching to ceiling may require extra wall or ceiling bracket with surcharge of £90 ex VAT.

<sup>1</sup> Max 2.5m high.

<sup>2</sup> For special glass finishes in oversize dimensions, add 10% to Glass Finish surcharges for every 100mm of extra height or width above maximum standard size panels.

HOW TO ORDER

- Select Wet Room Panel Size
- Make choices from OPTIONS table, adding suffix codes to EWMP code and surcharges to EWMP price; standard options will be supplied unless otherwise specified
- Bespoke (BES) EWMP sizes are listed, please see the BESPOKE OPTIONS table and page 44 for more information

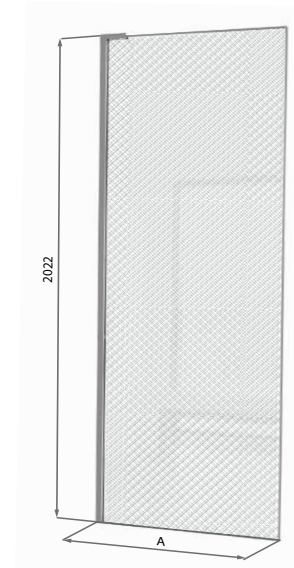
DIMENSIONS (MM)		PRICES	
<b>EWMP - SM SILVER MESH</b>	<b>A</b>	<b>£ EX. VAT</b>	<b>£ INC. VAT</b>
EWMP800SM	765 - 780	£2,901.00	£3,481.20
EWMP900SM	865 - 880	£3,151.00	£3,781.20
EWMP1000SM	965 - 980	£3,406.00	£4,087.20
EWMP1000BESSM	Up to 1000mm	£4,027.00	£4,832.40
EWMP1100SM	1065 - 1080	£3,662.00	£4,394.40
EWMP1200SM	1165 - 1180	£4,037.00	£4,844.40
EWMP1500BESSM	Up to 1500mm	£5,532.00	£6,638.40

DIMENSIONS (MM)		PRICES	
<b>EWMP - GM GOLD MESH</b>	<b>A</b>	<b>£ EX. VAT</b>	<b>£ INC. VAT</b>
EWMP800GM	765 - 780	£3,130.00	£3,756.00
EWMP900GM	865 - 880	£3,410.00	£4,092.00
EWMP1000GM	965 - 980	£3,696.00	£4,435.20
EWMP1000BESGM	Up to 1000mm	£4,234.00	£5,080.80
EWMP1100GM	1065 - 1080	£3,981.00	£4,777.20
EWMP1200GM	1165 - 1180	£4,381.00	£5,257.20
EWMP1500BESGM	Up to 1500mm	£6,061.00	£7,273.20

EWMP1200 and upwards come with a wall brace bar

MATKI INSTALLATIONS	CODE	£ EX. VAT	£ INC. VAT
Measure	MS	£210.00	£252.00
Installation - Standard or Bespoke up to 900mm wide	INST	£368.00	£441.60
Installation - Standard or Bespoke above 900mm wide	INST	£447.00	£536.40
Measure and Installation up to 900mm	MSINST	£578.00	£693.60
Measure and Installation above 900mm	MSINST	£657.00	£788.40

See page 43. Measure is optional for Standard and Bespoke (BES) models. Product and Installation prices may change after measure. For areas outside the UK mainland, please contact Matki for pricing. Please contact Matki for installation prices at heights above 2200mm.



OPTIONS

HANDING	
Left Hand - LH	Right Hand - RH

WALL FRAME TYPES	
Standard Frame	
Medium Frame - MED*	

\*Reduces adjustment range A max dimension by 5mm.

FRAME FINISHES	£ EX. VAT	£ INC. VAT
Ⓢ Polished Chrome - CP (Standard) / Brushed Brass - BB	-	-
Ⓢ Living Brass	-£50.00	-£60.00
Ⓢ Polished Nickel - NP / Living Copper - LC	£123.00	£147.60
Ⓢ Brushed Nickel - NB / Aged Brass - AB	£206.00	£247.20
Ⓢ Polished Gold - MG / Black Chrome - XP	£215.00	£258.00
Ⓢ Brushed Gold - GB / Brushed Black Chrome - XB	£305.00	£366.00

BESPOKE (BES) & ULTRA BESPOKE (ULTR) OPTIONS	BES Add Surcharges to BES Prices
Width changes up to dimensions listed *	✓
Width changes above max panel dims. listed * <sup>1</sup>	Add £375 ex VAT per 100mm
Reduced height	✓
Increased height up to max 2.5m	Add £300 ex VAT per 100mm

\* Panels attaching to ceiling may require extra ceiling frame with additional surcharge.

<sup>1</sup> Max 2.5m high.



## 66. EWL - RADIUS - 20 WET ROOM PANEL

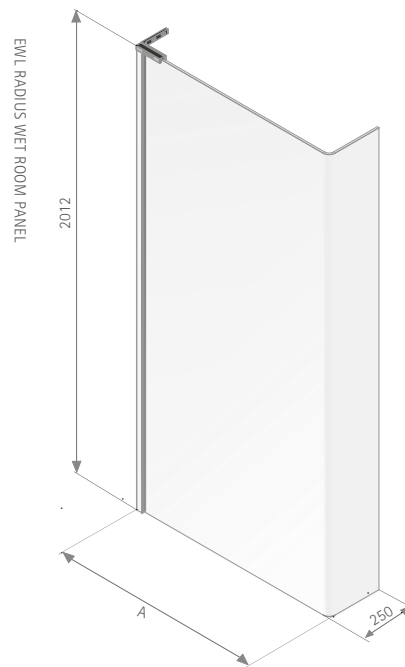
### HOW TO ORDER

- Select Wet Room Panel Size
- Make choices from OPTIONS table, adding suffix codes to EWL code and surcharges to EWL price; standard options will be supplied unless otherwise specified

DIMENSIONS (MM)		PRICES	
EWL	A	£ EX. VAT	£ INC. VAT
EWL800	754 - 764	£1,434.00	£1,720.80
EWL900	870 - 885	£1,486.00	£1,783.20
EWL1000	970 - 985	£1,549.00	£1,858.80

MATKI INSTALLATIONS	CODE	£ EX. VAT	£ INC. VAT
Measure	MS	£210.00	£252.00
Installation - Standard or Bespoke	INST	£447.00	£536.40
Measure and Installation	MSINST	£657.00	£788.40

See page 43. Measure is optional. For areas outside the UK mainland and Ireland, please contact Matki for pricing.



### OPTIONS

#### HANDING

Left Hand - LH

Right Hand - RH

#### WALL FRAME TYPES

Standard Frame

Medium Frame - MED\*

\*Reduces adjustment range A max dimension by 5mm. Prior to Autumn 2021, (S) finishes only

#### FRAME FINISHES

FRAME FINISHES	£ EX. VAT	£ INC. VAT
Sliver/Chrome - SC (Standard)	-	-
Matt Black - MB	£248.00	£297.60
(S) Living Brass	£250.00	£300.00
(S) Polished Chrome - CP (Standard) / Brushed Brass - BB	£300.00	£360.00
(S) Polished Nickel - NP / Living Copper - LC	£350.00	£420.00
(S) Brushed Nickel - NB / Aged Brass - AB	£396.00	£475.20
(S) Polished Gold - MG / Black Chrome - XP	£405.00	£486.00
(S) Brushed Gold - GB / Brushed Black Chrome - XB	£440.00	£528.00

HOW TO ORDER

- Select FIXED PANEL and HINGE PANEL sizes
- Make choices from OPTIONS table, adding suffix codes to EWPB and EWPB-HP code and surcharges to prices; standard options will be supplied unless otherwise specified
- Bespoke (BES) and Ultra Bespoke (ULTR) EWPB and EWPB-HP sizes are listed, please see the BESPOKE OPTIONS table and page 44 for more information

DIMENSIONS (MM)		PRICES	
FIXED PANEL	A	£ EX. VAT	£ INC. VAT
EWPB725FP	695 - 710	£900.00	£1,080.00
EWPB950FP	915 - 930	£964.00	£1,156.80
EWPB1100FP	1065 - 1080	£1,027.00	£1,232.40
EWPB1100FPBES	Up to 1100mm	£1,643.00	£1,971.60
EWPB1100FPULTR	Up to 1100mm	£2,164.00	£2,596.80

DIMENSIONS (MM)		PRICES	
HINGE PANEL	B	£ EX. VAT	£ INC. VAT
EWPB440HP	440	£296.00	£355.20
EWPB490HP	490	£308.00	£369.60
EWPB500BESHP	Up to 500mm	£795.00	£954.00

Fixed Panel and Hinge Panel are delivered pre-assembled.

MATKI INSTALLATIONS	CODE	£ EX. VAT	£ INC. VAT
Measure	MS	£210.00	£252.00
Installation - Standard or Bespoke	INST	£447.00	£536.40
Measure and Installation	MSINST	£657.00	£788.40

See page 43. Measure is optional for Standard and Bespoke (BES) models but required for Ultra Bespoke (ULTR). Product and Installation prices may change after measure. For areas outside the UK mainland, please contact Matki for pricing. Please contact Matki for installation prices at heights above 2200mm.



OPTIONS

HANDING		PANEL OPENING	
Left Hand - LH	Right Hand - RH	Inwards (Standard)	Outwards - OTW

WALL FRAME TYPES	
Standard Frame	
Medium Frame - MED*	
*Reduces adjustment range A max dimension by 5mm. Prior to Autumn 21, (S) finishes only	

FRAME FINISHES	£ EX. VAT	£ INC. VAT
Sliver/Chrome - SC (Standard)	-	-
Matt Black - MB	£396.00	£475.20
(S) Polished Chrome - CP	£355.00	£426.00
(S) Polished Nickel - NP	£462.00	£554.40
(S) Brushed Nickel - NB	£535.00	£642.00
(S) Polished Gold - MG / Black Chrome - XP	£547.00	£656.40
(S) Brushed Gold -GB / Brushed Black Chrome - XB	£627.00	£752.40

BESPOKE (BES) & ULTRA BESPOKE (ULTR) OPTIONS	BES	ULTR
	Add Surcharges to BES/ULTR Prices	
Width change up to dimensions listed	✓	✓
Width change above max panel dims. listed *	Add £100 ex VAT per 100mm	
Reduced height	✓	✓
Increased height per panel*	Add £75 ex VAT per 100mm	
Glass Shaping: e.g. Angles, Cut Outs <sup>2</sup>	✗	✓
Holes for Towel Rail Fitting (EWPB only) - see page 37	Add £60 ex VAT	
<b>All Glass finish prices refer to whole product EWPB + EWPB-HP</b>		
Tinted / Low Iron Glass Finish <sup>2</sup> - see page 40	Add £320 ex VAT	
Satin/Frosted Glass Finish <sup>2</sup>	Add £375 ex VAT	
Ultra Black Glass Finish <sup>2</sup>	Add £660 ex VAT	
Ultra Bespoke Frames <sup>3</sup> - see page 41	✗	✓

<sup>1</sup> Max 2.4m high with BES (standard frames), Max 3m with ULTR - additional hinge may be required with surcharge.

<sup>2</sup> Require Measure and Installation.

\* For special glass finishes in oversize dimensions, add 10% to Glass Finish surcharges for every 100mm of extra height or width above maximum standard size panels.

## 68. EWT: 12MM GLASS WET ROOM PANEL

### HOW TO ORDER

- Select Wet Room Panel Size
- Make choices from OPTIONS table, adding suffix codes to EWT code and surcharges to EWT price; standard options will be supplied unless otherwise specified

DIMENSIONS (MM)		PRICES	
HINGE PANEL	A	£ EX. VAT	£ INC. VAT
EWT900	890 - 905	£829.00	£994.80
EWT1000	990 - 1005	£932.00	£1,118.40
EWT1200	1190 - 1205	£1,067.00	£1,280.40

MATKI INSTALLATIONS	CODE	£ EX. VAT	£ INC. VAT
Measure	MS	£210.00	£252.00
Installation - Standard or Bespoke	INST	£447.00	£536.40
Measure and Installation	MSINST	£657.00	£788.40

See page 43. Measure is optional. For areas outside the UK mainland and Ireland, please contact Matki for pricing.



### OPTIONS

FRAME FINISHES	£ EX. VAT	£ INC. VAT
Sliver/Chrome - SC (Standard)	-	-
Brushed Steel - ST	£248.00	£297.60
Gold - SG	£248.00	£297.60

TOWEL RAILS	£ EX. VAT	£ INC. VAT
No Towel Rail (Standard)	-	-
Linear Towel Rail - LTR700P	£235.00	£282.00
Linear Towel Rail with Soap Hook - LTR700D	£251.00	£301.20
Traditional Towel Rail - TTR700P	£235.00	£282.00
Traditional Towel Rail Two-Sided - TTRDS700P	£350.00	£420.00

See page 37 for images. Add £50 ex VAT for Towel Rail to match Brushed Steel and £62 ex VAT for Gold.

HOW TO ORDER

- Select TWIN ENTRANCE Wet Room Panel model size
- Make choices from OPTIONS table, adding suffix codes to AST code and surcharges to AST price; standard options will be supplied unless otherwise specified
- Bespoke (BES) and Ultra Bespoke (ULTR) AST sizes are listed, please see the BESPOKE OPTIONS table and page 44 for more information

DIMENSIONS (MM)		PRICES	
TWIN ENTRANCE	A	£ EX. VAT	£ INC. VAT
AST1000	950	£708.00	£849.60
AST1200	1150	£766.00	£919.20
AST1200BES	Up to 1200mm	£1,120.00	£1,344.00
AST1200ULTR	Up to 1200mm	£1,287.00	£1,544.40
AST1500	1450	£974.00	£1,168.80
AST1500BES	Up to 1500mm	£1,260.00	£1,512.00
AST1500ULTR	Up to 1500mm	£1,475.00	£1,770.00

MATKI INSTALLATIONS	CODE	£ EX. VAT	£ INC. VAT
Measure	MS	£210.00	£252.00
Installation - Standard or Bespoke	INST	£447.00	£536.40
Measure and Installation	MSINST	£657.00	£788.40

See page 43. Measure is optional for Standard and Bespoke (BES) models but required for Ultra Bespoke (ULTR). Product and Installation prices may change after measure. For areas outside the UK mainland, please contact Matki for pricing. Please contact Matki for installation prices at heights above 2200mm and widths above 1700mm.



OPTIONS

FRAME FINISHES	£ EX. VAT	£ INC. VAT
Sliver/Chrome - SC (Standard)	-	-
Matt Black - MB	£175.00	£210.00
Ⓢ Polished Nickel - NP	£76.00	£91.20
Ⓢ Brushed Nickel - NB	£116.00	£139.20
Ⓢ Polished Gold - MG	£127.00	£152.40
Ⓢ Brushed Gold - GB	£164.00	£196.80

BESPOKE (BES) & ULTRA BESPOKE (ULTR) OPTIONS	BES	ULTR
	Add Surcharges to BES/ULTR Prices	
Width changes up to dimensions listed	✓	✓
Width changes above max panel dims. listed *	Add £100 ex VAT per 100mm	
Reduced height*	✓	✓
Increased height*	Add £75 ex VAT per 100mm	
Glass Shaping: e.g. Angles, Cut Outs <sup>1</sup>	✗	✓
Holes for Towel Rail Fitting - see page 37	Add £60 ex VAT per 100mm	
Tinted / Low Iron Glass Finish <sup>2</sup> - see page 40	Add £305 ex VAT	
Satin/Frosted Glass Finish <sup>2</sup>	Add £350 ex VAT	
Ultra Black Glass Finish <sup>2</sup>	Add £580 ex VAT	

\* For fixing to ceiling use Ultra Bespoke (ULTR) codes and prices.

<sup>1</sup> Require Measure and Installation.

<sup>2</sup> For special glass finishes in oversize dimensions, add 10% to Glass Finish surcharges for every 100mm of extra height or width above maximum standard size panels.



## 70. EHW: HINGE PANEL

### HOW TO ORDER

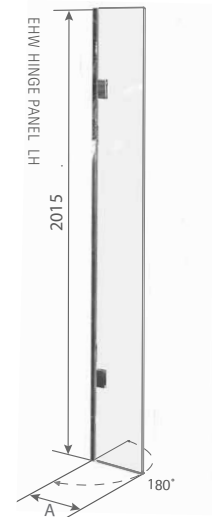
Order with EWP Wet Room Panel - page 63 or to retrofit onto existing wet room panel to provide extra splash protection

DIMENSIONS (MM)		PRICES	
HINGE PANEL	A	£ EX. VAT	£ INC. VAT
EHW300HP	313	£480.00	£576.00

MATKI INSTALLATIONS	CODE	£ EX. VAT	£ INC. VAT
Measure	MS	£210.00	£252.00
Installation - Standard or Bespoke	INST	£368.00	£441.60
Measure and Installation	MSINST	£578.00	£693.60

See page 43. Measure is recommended if being supplied as retrofit product to any other product but a standard EWP Wet Room Panel, see page 63. If being supplied to fit with an EWP Wet Room Panel, measure is not chargeable and add £75 ex VAT to EWP installation price.

Product and Installation prices may change after measure. For areas outside the UK mainland, please contact Matki for pricing.



### OPTIONS

#### HINGE PANEL OPENING

Inwards and Outwards through 180° (Standard)

#### FRAME FINISHES

Sliver/Chrome - SC (Standard)

£ EX. VAT

-

£ INC. VAT

-

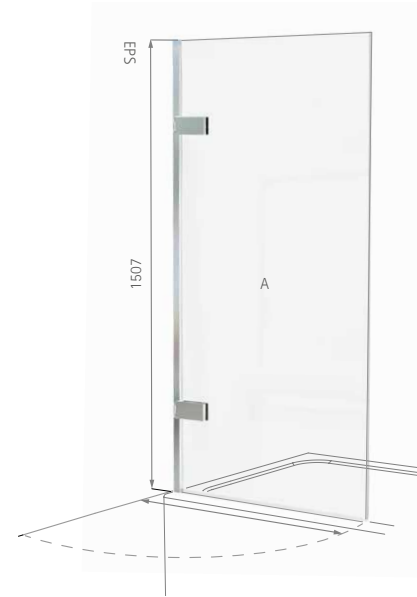
HOW TO ORDER

- Select Model from table below
- Make choices from OPTIONS table, adding suffix codes to EPS code and surcharges to EPS price; standard options will be supplied unless otherwise specified
- Bespoke (BES) and Ultra Bespoke (ULTR) sizes are listed, please see the BESPOKE OPTIONS table and page 44 for more information

DIMENSIONS (MM)		PRICES	
MODEL	A	£ EX. VAT	£ INC. VAT
EPS700	722 – 737	£652.00	£782.40
EPS800	822 – 837	£712.00	£854.40
EPS800BES	Up to 837mm	£818.00	£981.60
EPS800ULTR	Up to 837mm	£872.00	£1,046.40

MATKI INSTALLATIONS	CODE	£ EX. VAT	£ INC. VAT
Measure	MS	£210.00	£252.00
Installation - Standard or Bespoke	INST	£368.00	£441.60
Measure and Installation	MSINST	£578.00	£693.60

See page 43. Measure is optional for Standard and Bespoke (BES) models but required for Ultra Bespoke (ULTR). Product and Installation prices may change after measure. For areas outside the UK mainland, please contact Matki for pricing. Please contact Matki for installation prices at heights above 2200mm.



OPTIONS

HANDING	PANEL OPENING
Left Hand - LH      Right Hand - RH	Outwards (Standard)

FRAME ACCENTS	£ EX. VAT	£ INC. VAT
None (Standard)	-	-
EPS Frame Accent Pack - FVP*	£210.00	£252.00

\*Only available in (S) finishes below from Autumn 2021

FRAME FINISHES	£ EX. VAT	£ INC. VAT
Sliver/Chrome - SC (Standard)	-	-
Matt Black - Ultra Bespoke Frames only	£248.00	£297.60
(S) Polished Chrome - CP	£600.00	£720.00
(S) Polished Nickel - NP / Living Brass - LB	£650.00	£780.00
(S) Brushed Nickel - NB / Brushed Brass - BB	£690.00	£828.00
(S) Living Copper - LC / Aged Brass - AB	£725.00	£870.00
(S) Polished Gold - MG / Black Chrome - XP	£733.00	£879.60
(S) Brushed Gold - GB	£757.00	£908.40
(S) Brushed Black Chrome - XB	£757.00	£908.40

BESPOKE (BES) & ULTRA BESPOKE (ULTR) OPTIONS	BES	ULTR
	Add Surcharges to BES/ULTR Prices	
Width change up to dimensions listed	✓	✓
Width change above max panel dims. listed *	Add £100 ex VAT per 100mm	
Reduced height	✓	✓
Increased height per panel*	Add £75 ex VAT per 100mm	
Glass Shaping: e.g. Angles <sup>1</sup>	✗	✓
Tinted / Low Iron Glass Finish - see page 40	Add £110 ex VAT	
Satin/Frosted Glass Finish	Add £130 ex VAT	
Ultra Black Glass Finish	Add £255 ex VAT	
Ultra Bespoke Frames - see page 41	✗	✓

<sup>1</sup> Require Measure and Installation.

\* For special glass finishes in oversize dimensions, add 10% to Glass Finish surcharges for every 100mm of extra height and width above maximum standard size panels

## 72. EPB - TWO PANEL BATH SCREEN

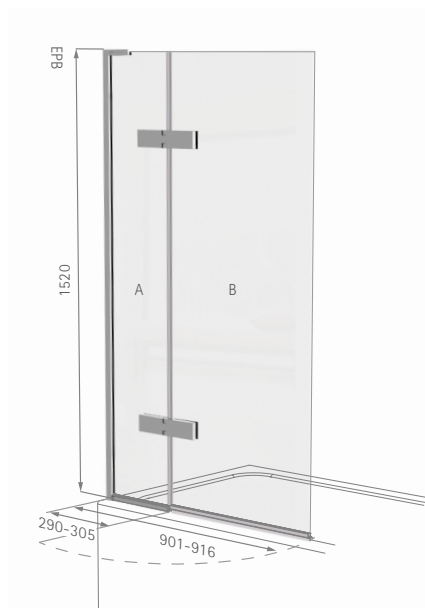
### HOW TO ORDER

- Select Model from table below
- Make choices from OPTIONS table, adding suffix codes to EPB code and surcharges to EPB price; standard options will be supplied unless otherwise specified
- Bespoke (BES) and Ultra Bespoke (ULTR) sizes are listed, please see the BESPOKE OPTIONS table and page 44 for more information

DIMENSIONS (MM)		PRICES		
MODEL	A	B	£ EX. VAT	£ INC. VAT
EPB900	290 – 305	611	£904.00	£1,084.80
EPB900BES	Up to 305mm	Up to 611mm	£1,162.00	£1,394.40
EPB900ULTR	Up to 305mm	Up to 611mm	£1,434.00	£1,720.80

MATKI INSTALLATIONS	CODE	£ EX. VAT	£ INC. VAT
Measure	MS	£210.00	£252.00
Installation - Standard or Bespoke	INST	£447.00	£536.40
Measure and Installation	MSINST	£657.00	£788.40

See page 43. Measure is optional for Standard and Bespoke (BES) models but required for Ultra Bespoke (ULTR). Product and Installation prices may change after measure. For areas outside the UK mainland, please contact Matki for pricing. Please contact Matki for installation prices at heights above 2200mm.



### OPTIONS

HANDING		PANEL OPENING	
Left Hand - LH	Right Hand - RH	Outwards (Standard)	Inwards - INW

FRAME ACCENTS	£ EX. VAT	£ INC. VAT
None (Standard)	-	-
EPB Frame Accent Pack - FVP*	£390.00	£468.00

\*Only available in finishes below from Autumn 2021

FRAME FINISHES	£ EX. VAT	£ INC. VAT
Silver/Chrome - SC (Standard)	-	-
Matt Black - Ultra Bespoke Frames only	£446.00	£535.20
Polished Chrome - CP	£250.00	£300.00
Polished Nickel - NP / Living Brass - LB	£300.00	£360.00
Brushed Nickel - NB / Brushed Brass - BB	£385.00	£462.00
Living Copper - LC / Aged Brass - AB	£444.00	£532.80
Polished Gold - MG / Black Chrome - XP	£457.00	£548.40
Brushed Gold - GB	£498.00	£597.60
Brushed Black Chrome - XB	£498.00	£597.60

BESPOKE (BES) & ULTRA BESPOKE (ULTR) OPTIONS	BES	ULTR
	Add Surcharges to BES/ULTR Prices	
Width change up to dimensions listed	✓	✓
Width change above max panel dims. listed *	Add £100 ex VAT per 100mm	
Reduced height	✓	✓
Increased height per panel*	Add £75 ex VAT per 100mm	
Glass Shaping: e.g. Angles, Cut Outs <sup>1</sup>	✗	✓
<b>All Glass finish prices refer to whole product EPB</b>		
Tinted / Low Iron Glass Finish - see page 40	Add £110 ex VAT	
Satin/Frosted Glass Finish	Add £130 ex VAT	
Ultra Black Glass Finish	Add £255 ex VAT	
Ultra Bespoke Frames - see page 41	✗	✓

<sup>1</sup> Require Measure and Installation.

\* For special glass finishes in oversize dimensions, add 10% to Glass Finish surcharges for every 100mm of extra height and width above maximum standard size panels

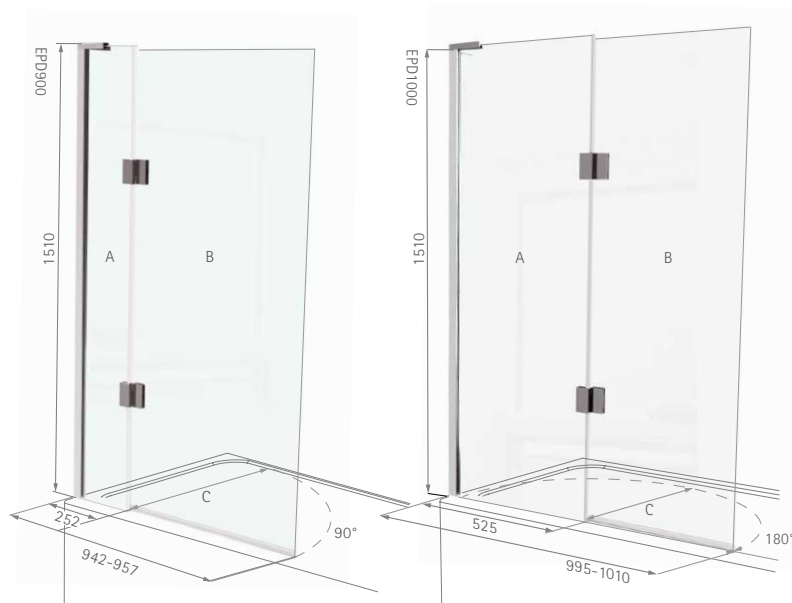
HOW TO ORDER

- █ Select model from table below
- █ Make choices from OPTIONS table, adding suffix codes to EPD code and surcharges to EPD price; standard options will be supplied unless otherwise specified.
- █ Bespoke (BES) and Ultra Bespoke (ULTR) sizes are listed, please see the BESPOKE OPTIONS table and page 44 for more information

DIMENSIONS (MM)				PRICES		
MODEL	A+B	A	B	C	£ EX. VAT	£ INC. VAT
EPD900	942 - 957	252	690	723	£727.00	£872.40
EPD907	942 - 957	332	610	643	£727.00	£872.40
EPD1000	995 - 1010	525	470	504	£743.00	£891.60
EPD1000BES	Up to 1010mm	Up to 525mm	Up to 690mm		£1,266.00	£1,519.20
EPD1000ULTR	Up to 1010mm	Up to 525mm	Up to 690mm		£1,528.00	£1,833.60

MATKI INSTALLATIONS	CODE	£ EX. VAT	£ INC. VAT
Measure	MS	£210.00	£252.00
Installation - Standard or Bespoke	INST	£447.00	£536.40
Measure and Installation	MSINST	£657.00	£788.40

See page 43. Measure is optional for Standard and Bespoke (BES) models but required for Ultra Bespoke (ULTR). Product and Installation prices may change after measure. For areas outside the UK mainland, please contact Matki for pricing. Please contact Matki for installation prices at heights above 2200mm.



OPTIONS

HANDING

Left Hand - LH      Right Hand - RH

PANEL OPENING

Inwards (Standard)      Outwards - OTW

WALL FRAME TYPES

Standard Frame

Medium Frame - MED\*

\*Available from Autumn 2021. Reduces adjustment range A max dimension by 5mm.

FRAME FINISHES

FRAME FINISHES	£ EX. VAT	£ INC. VAT
Sliver/Chrome - SC (Standard)	-	-
Matt Black - MB	£446.00	£535.20
Ⓢ Polished Chrome - CP	£250.00	£300.00
Ⓢ Polished Nickel - NP	£300.00	£360.00
Ⓢ Brushed Nickel - NB	£385.00	£462.00
Ⓢ Polished Gold - MG	£444.00	£532.80
Ⓢ Black Chrome - XP	£457.00	£548.40
Ⓢ Brushed Gold -GB / Brushed Black Chrome - XB	£498.00	£597.60

BESPOKE (BES) & ULTRA BESPOKE (ULTR) OPTIONS

	BES Add Surcharges to BES/ULTR Prices	ULTR
Width change up to dimensions listed	✓	✓
Width change above max panel dims. listed *	Add £100 ex VAT per 100mm	
Reduced height	✓	✓
Increased height per panel *	Add £75 ex VAT per 100mm	
Glass Shaping: e.g. Angles, Cut Outs <sup>1</sup>	✗	✓
<b>All Glass finish prices refer to whole product EPD</b>		
Tinted / Low Iron Glass Finish - see page 40	Add £115 ex VAT	
Satin/Frosted Glass Finish	Add £135 ex VAT	
Ultra Black Glass Finish	Add £270 ex VAT	
Ultra Bespoke Frames - see page 41	✗	✓

<sup>1</sup> Require Measure and Installation.

\* For special glass finishes in oversize dimensions, add 10% to Glass Finish surcharges for every 100mm of extra height and width above maximum standard size panels







## SHOWER TRAYS AND FLOORS BY MATKI

Complete luxury in the Shower demands a stunning foundation.

Matki have manufactured Shower Trays in Cornwall since 1979.

Beginning life within a small boat building factory in Penryn, we now operate a 60000 sq. ft purpose-built factory in Redruth.

All our Shower Trays and Floors are hand built and hand finished with precise attention given to the surface finish; robust coatings are then applied using state of the art machinery ensuring perfect durability.

Each important phase of manufacture is carried out by experienced team members, some of whom have worked with Matki since the very early days. With this experience comes an expert knowledge of our products and our quality demands - each Shower Tray that leaves the Redruth factory is inspected with expert eyes.

Matki offer a wide choice of shapes, sizes, styles and colours of Shower Tray including bespoke, designed to work harmoniously with Matki Shower Enclosures.

### PEACE OF MIND

All Matki Shower Trays and Floors use surface materials which are chosen for their longevity, durability and natural non-slip qualities.

Matt White Continental, Preference and Slate are all Certified Anti Slip Rated using the DIN51097 standard framework.



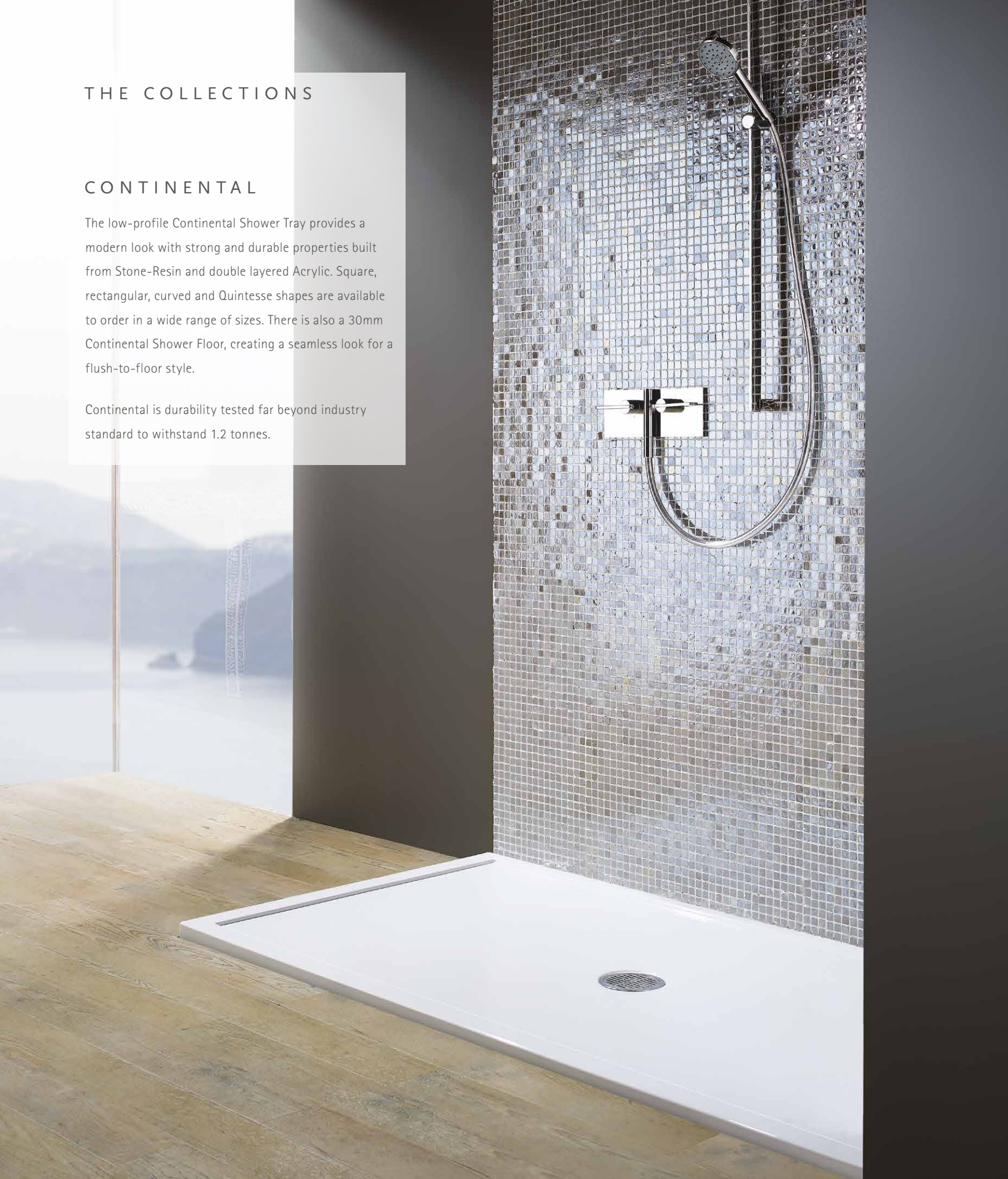


## THE COLLECTIONS

### CONTINENTAL

The low-profile Continental Shower Tray provides a modern look with strong and durable properties built from Stone-Resin and double layered Acrylic. Square, rectangular, curved and Quintesse shapes are available to order in a wide range of sizes. There is also a 30mm Continental Shower Floor, creating a seamless look for a flush-to-floor style.

Continental is durability tested far beyond industry standard to withstand 1.2 tonnes.





## P R E F E R E N C E

Made from the Matki Preference Solid Surface formula rich in ground Marble, Preference Shower Trays and Floors have a luxurious quality each taking up to 6 hours to perfect and hand-polish.

For fitting showering spaces into challenging layouts, bespoke sizes with cut-outs can be produced, catering for internal pipe chases, alcoves and around-bath setups.

Preference Shower Trays and Floors are available in any shape and size up to 2050mm by 1150mm and the central position of the waste can be shifted to avoid joists and other obstructions.



## U N I V E R S A L

Available in any colour to order, our team can use RAL/Pantone charts, tile samples or even paint names to match colours to the wider bathroom design scheme.

Square, rectangle, curved and Quintesse shapes are available to order - the Universal Linear adds a note of difference to the collection with a uniquely designed linear waste cover.



## S L A T E

Modelled on natural slate, the Slate Shower Tray and Floor have an authentic feel harmonising beautifully with natural stone schemes in the bathroom - it is even possible to colour match to surrounding tiling.

Slate Shower Floors can be made to measure in square or rectangular shapes in any size up to 2000mm x 1000mm with a central waste which can be offset dependent on size ordered.



## F I N E L I N E

Striking a fineline between aesthetic and practicality. With a slightly increased height of 60mm, the Fineline brings added peace of mind and a deeper showering area.

Manufactured from high quality Stone Resin with a double layer acrylic cap.



## 78. SQUARE & RECTANGULAR SHOWER TRAYS

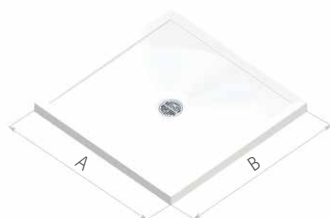


CL900

### CONTINENTAL 40



- Low Profile 40mm, 10mm Raised Threshold
- Stone resin, double acrylic cap
- Centre high-flow shower waste with Chrome flange and Stainless Steel grill
- Raised Tray version optional with adjustable legs and front panel in white only. Adds 100mm to height. Recess add £66, Corner add £102 ex VAT
- Available in White, Matt White\*\*, Black, Pergamon\*\*
- Matt White is certified DIN51097 A Anti Slip



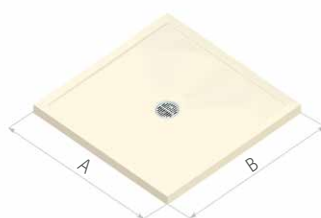
A	B	CL	PRICE (EX. VAT)	PRICE (INC. VAT)
800	800	CL800	£219.00	£262.80
900	800	CL9080	£244.00	£292.80
900	900	CL900	£257.00	£308.40
1000	800	CL1080	£266.00	£319.20
1000	900	CL1090	£272.00	£326.40
1000	1000	CL1000	£332.00	£398.40
1100	800	CL1180	£281.00	£337.20
1100	900	CL1190	£287.00	£344.40
1200	700	CL1270	£278.00	£333.60
1200	760	CL1276	£280.00	£336.00
1200	800	CL1280	£282.00	£338.40
1200	900	CL1290	£325.00	£390.00
1200	1000	CL1210**	£355.00	£426.00
1300	800	CL1380	£347.00	£416.40
1300	900	CL1390	£358.00	£429.60
1400	800	CL1480	£367.00	£440.40
1400	900	CL1490	£387.00	£464.40
1500	800	CL1580	£411.00	£493.20
1500	900	CL1590	£414.00	£496.80
1600	800	CL1680	£425.00	£510.00
1600	900	CL1690	£431.00	£517.20
1700	800	CL1780	£440.00	£528.00
1700	900	CL1790	£465.00	£558.00
1800	900	CL1890**	£492.00	£590.40



UL1290

### UNIVERSAL 40

- Low Profile 40mm, 10mm Raised Threshold
- Stone resin, gel coating
- Centre high-flow shower waste with Chrome flange and Stainless Steel grill
- UL900, UL1280, UL1290 and UL1680 available in semi matt finish
- Raised Tray version optional with adjustable legs and front panel in colour to match tray. Adds 100mm to height. Recess add £66, Corner add £102 ex VAT
- Available in any colour via RAL or sample matching



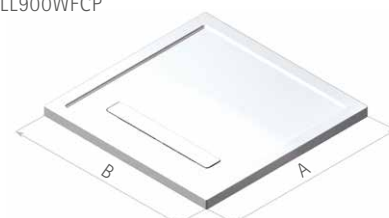
A	B	UL	PRICE (EX. VAT)	PRICE (INC. VAT)
760	760	UL760	£263.00	£315.60
800	800	UL800	£273.00	£327.60
900	900	UL900	£310.00	£372.00
1200	800	UL1280	£336.00	£403.20
1200	900	UL1290	£379.00	£454.80
1400	900	UL1490	£441.00	£529.20
1500	900	UL1590	£468.00	£561.60
1600	800	UL1680	£478.00	£573.60



ULL1290

### UNIVERSAL LINEAR

- Low Profile 40mm, 10mm Raised Threshold
- Stone resin, gel coating
- Modern Linear waste cover in colour to match tray (standard), or as a slotted brass cover in a range of special finishes, surcharges apply see page 81
- Raised Tray version optional with adjustable legs and front panel in colour to match tray. Adds 100mm to height. Recess add £66, Corner add £102 ex VAT
- Available in any colour via RAL or sample matching
- Available without waste drilled, allowing choice of waste position or use of 2 wastes to drain up to 50L/min with brass slotted cover. Add 'W' to end of code for undrilled, e.g. ULL900W, and 'WF' with additional waste (surcharge £93), e.g. ULL900WFCP



A	B	ULL	PRICE (EX. VAT)	PRICE (INC. VAT)
900	900	ULL900	£309.00	£370.80
1000	800	ULL1080	£315.00	£378.00
1200	800	ULL1280	£347.00	£416.40
1200	900	ULL1290	£370.00	£444.00
1300	900	ULL1390	£392.00	£470.40
1400	800	ULL1480	£401.00	£481.20
1400	900	ULL1490	£422.00	£506.40
1500	900	ULL1590	£479.00	£574.80
1700	900	ULL1790	£507.00	£608.40



Tray without waste drilled

#### POPULAR COLOUR OPTIONS FOR UNIVERSAL 40, UNIVERSAL LINEAR AND SLATE SHOWER TRAYS



\*\*Not available in Matt White or Pergamon

For waste options please see page 81



**FINELINE**

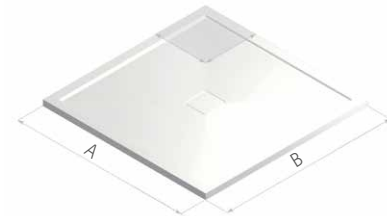
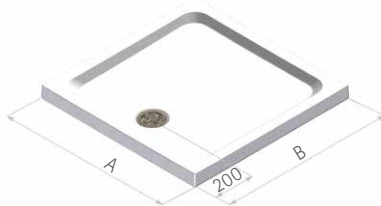
- ▮ Medium Profile 60mm, 35mm Raised Threshold
- ▮ Stone resin, double acrylic cap
- ▮ Supplied with adjustable legs
- ▮ Centre front high-flow shower waste with Chrome flange and Stainless Steel grill
- ▮ Available in White only
- ▮ Optional front panel in white only. Recess add £66, Corner add £102 ex VAT

**SLATE**

- ▮ Low Profile 40mm, 10mm+ Raised Threshold
- ▮ Stone resin, gel coating
- ▮ Centre side shower waste with cover in matching colour
- ▮ Raised Tray version optional with adjustable legs and front panel in colour to match tray. Adds 100mm to height. Recess add £66, Corner add £102 ex VAT
- ▮ Available in any colour via RAL or sample matching
- ▮ Textured finish modelled on real slate
- ▮ Certified DIN51097 A Anti Slip

**PREFERENCE**

- ▮ Low Profile 30mm-35mm, 10mm Raised Threshold
- ▮ Solid surface, semi matt
- ▮ Centre shower waste with cover in Preference Material
- ▮ Durable and fully restorable surface
- ▮ For details on Bespoke Shower Trays see page 81
- ▮ Available in White only
- ▮ DIN51097 B Anti Slip and PTV 36+ Low Slip Potential



A	B	SN	PRICE (EX. VAT)	PRICE (INC. VAT)
697	697	SN700	£224.00	£268.80
754	754	SN760	£235.00	£282.00
797	797	SN800**	£248.00	£297.60
895	758	SN9076	£262.00	£314.40
895	795	SN9080	£269.00	£322.80
896	896	SN900**	£287.00	£344.40
998	998	SN1000	£339.00	£406.80
1050	796	SN1050	£300.00	£360.00
1200	700	SN1270	£294.00	£352.80
1194	758	SN1276	£320.00	£384.00
1200	797	SN1280**	£330.00	£396.00
1196	898	SN1290	£361.00	£433.20
1505	805	SN1580**	£426.00	£511.20
1500	900	SN1590	£438.00	£525.60
1700	700	SN1770	£421.00	£505.20
1700	800	SN1780	£457.00	£548.40
1700	900	SN1790	£485.00	£582.00
1800	800	SN1880	£494.00	£592.80

A	B	SL	PRICE (EX. VAT)	PRICE (INC. VAT)
905	905	SL900	£371.00	£445.20
1205	805	SL1280	£409.00	£490.80
1205	905	SL1290	£425.00	£510.00
1405	805	SL1480	£473.00	£567.60
1505	805	SL1580	£511.00	£613.20
1502	905	SL1590	£525.00	£630.00
1605	805	SL1680	£533.00	£639.60
1700	905	SL1790	£544.00	£652.80

A	B	MP	PRICE (EX. VAT)	PRICE (INC. VAT)
800	800	MP800	£433.00	£519.60
900	900	MP900	£475.00	£570.00
1000	1000	MP1000	£541.00	£649.20
1200	900	MP1290	£553.00	£663.60
1500	900	MP1590	£661.00	£793.20
*900	900	MP900 MTM	£709.00	£850.80
*1000	1050	MP1000 MTM	£812.00	£974.40
*1350	1050	MP1315 MTM	£957.00	£1,148.40
*1350	1350	MP1350 MTM	£1,155.00	£1,386.00
*1800	1150	MP1800 MTM	£1,286.00	£1,543.20
*2050	1150	MP2000 MTM	£1,323.00	£1,587.60

\*Made to Measure up to size

\*\*Available with 10mm tiling upstands , please see [www.matki.co.uk](http://www.matki.co.uk) for further details



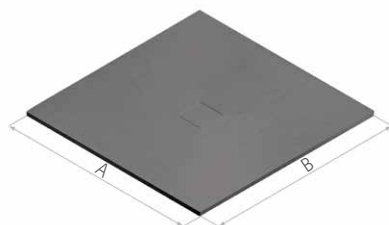
Quick Delivery to mainland UK within two days, available on all standard white Continental CL and FL models with Stainless Steel waste. Please clearly state 'Quick Delivery' and place order before midday.

Quick Delivery to Postcodes AB, DD, PA, PH, IV, KW, TD within 3 days of order.



**SLATE FLOOR**

- ▮ Flush to Floor fitting, 38mm Depth
- ▮ Stone resin, gel coating
- ▮ Centre shower waste with cover in matching colour
- ▮ Available in any colour via RAL or sample matching
- ▮ Textured finish modelled on real slate
- ▮ Certified DIN51097 A Anti Slip
- ▮ Choose from 700, 760, 800, 900, 1000 width dimension at same price, please state width required clearly on order. For alternative lengths, widths and waste locations if possible, add £140 ex VAT



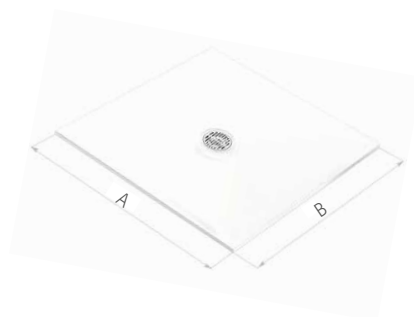
A	B	SLF	PRICE (EX. VAT)	PRICE (INC. VAT)
760	700-760	SLF760	£408.00	£489.60
800	700-800	SLF800	£408.00	£489.60
900	700-900	SLF900	£408.00	£489.60
1000	700-1000	SLF1000	£427.00	£512.40
1100	700-1000	SLF1100	£454.00	£544.80
1200	700-1000	SLF1200	£454.00	£544.80
1300	700-1000	SLF1300	£520.00	£624.00
1400	700-1000	SLF1400	£520.00	£624.00
1500	700-1000	SLF1500	£520.00	£624.00
1600	700-1000	SLF1600	£585.00	£702.00
1700	700-1000	SLF1700	£585.00	£702.00
1800	700-1000	SLF1800	£585.00	£702.00
1900	700-1000	SLF1900	£756.00	£907.20
2000	700-1000	SLF2000	£756.00	£907.20



**CONTINENTAL 30**



- ▮ Standard or Flush to Floor fitting, 35mm Depth
- ▮ Stone resin, double acrylic cap
- ▮ Centre high-flow shower waste with Chrome flange with Stainless Steel grill
- ▮ Available in White, Matt White, Black, Pergamon
- ▮ Matt White is certified DIN51097 A Anti Slip
- ▮ Tiling flange now removed

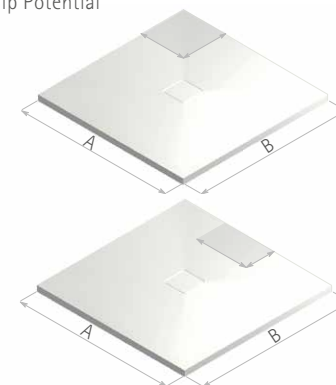


A	B	FL	PRICE (EX. VAT)	PRICE (INC. VAT)
800	800	FL800	£259.00	£310.80
900	800	FL9080	£270.00	£324.00
900	900	FL900	£287.00	£344.40
1200	800	FL1280	£308.00	£369.60
1200	900	FL1290	£318.00	£381.60
1500	900	FL1590	£401.00	£481.20
1700	900	FL1790	£426.00	£511.20



**PREFERENCE FLOOR**

- ▮ Flush to Floor fitting, 20mm-25mm Depth
- ▮ Solid surface, semi matt
- ▮ Centre shower waste with cover in Preference Material
- ▮ Durable and fully restorable surface
- ▮ Available in White only
- ▮ Fully bespoke shapes up to 2000mm x 1100mm
- ▮ Certified DIN51097 B Anti Slip and PTV 36+ Low Slip Potential



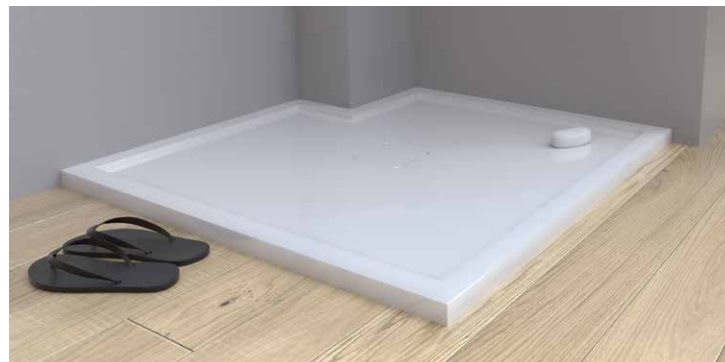
A	B	MF	PRICE (EX. VAT)	PRICE (INC. VAT)
760	700-760	MF760 MTM	£498.00	£597.60
800	700-800	MF800 MTM	£498.00	£597.60
900	700-900	MF900 MTM	£498.00	£597.60
1000	700-1000	MF1000 MTM	£586.00	£703.20
1100	700-1100	MF1100 MTM	£730.00	£876.00
1200	700-1200	MF1200 MTM	£730.00	£876.00
1300	700-1300	MF1300 MTM	£854.00	£1,024.80
1400	700-1100	MF1400 MTM	£854.00	£1,024.80
1500	700-1100	MF1500 MTM	£896.00	£1,075.20
1600	700-1100	MF1600 MTM	£896.00	£1,075.20
1700	700-1100	MF1700 MTM	£944.00	£1,132.80
1800	700-1100	MF1800 MTM	£944.00	£1,132.80
1900	700-1100	MF1900 MTM	£976.00	£1,171.20
2000	700-1100	MF2000 MTM	£976.00	£1,171.20

Matki Shower Floors are designed for a flush, flat to floor appearance. If the showering area is not fully enclosed water may escape the edges of the Matki Shower floor. This should be considered during design and installation in a fully tanked and prepared wet room area.

For waste options please see opposite page

**PREFERENCE SHOWER TRAY – MP**

- ▮ Shapes: Square, Rectangular Angled sides, Quintesse, Curved (standard 550 radius), Cut-outs
- ▮ Sizes: Any size up to 2050mm x 1150mm
- ▮ Waste location can be moved centrally to avoid joists
- ▮ Further details and prices see page 79



**PREFERENCE SHOWER FLOOR – MF**

- ▮ Shapes: Square, Rectangular Angled sides, Quintesse, Curved (any radius), Cut-outs
- ▮ Sizes: Any size up to 2000mm x 1100mm
- ▮ Waste location can be repositioned centrally to avoid joists
- ▮ Further details and prices see page 80

**SLATE SHOWER FLOOR – SLF**

- ▮ Shapes: Square, Rectangular
- ▮ Sizes: Any size up to 2000mm x 1000mm
- ▮ Colour: Any colour in RAL or sample matching
- ▮ Waste location can be repositioned centrally dependent on size
- ▮ Further details and prices see page 80

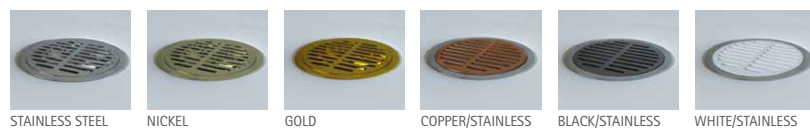


For more information on Made to Measure Shower Trays please contact the Matki Bespoke Team [bespoke.department@matki.co.uk](mailto:bespoke.department@matki.co.uk) 01454 322888

**WASTE COLOURS AND FINISHES**

WASTE GRILL AND FLANGE OPTIONS FOR CONTINENTAL, UNIVERSAL 40 AND FINELINE:

High-flow shower waste with Chrome flange and Stainless Steel grill as standard, see alternative finishes below and quote on order adding a supplement of £34 excluding VAT for these finishes.



**S** SWADLING BRASSWARE FINISHES FOR UNIVERSAL LINEAR WASTE COVER:



Surcharges: CP £134; NP £148; NB £154; MG, LB £174; AB, BB, GB £181. All ex VAT.

Add finish in brackets to end of tray code. e.g. ULL900CP, or with undrilled waste position ULL900WCP.

\*Living Brass and Brushed Brass are natural, unlacquered Brass. Unless regularly cleaned and polished, they will age over time through oxidation at unpredictable rates. Aged Brass is also susceptible to change over time. Please see Matki Care & Maintenance Guidelines for more information, [www.matki.co.uk](http://www.matki.co.uk).

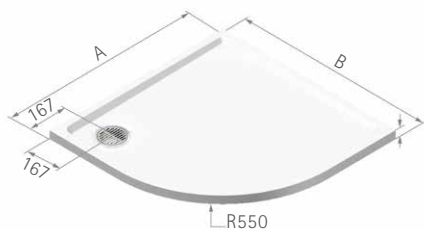


## 82. CURVED SHOWER TRAYS



### CONTINENTAL 40 CURVED

- 40mm Height, 10mm Raised Threshold
- Stone resin, double acrylic cap
- High-flow shower waste with Chrome flange and Stainless Steel grill as standard
- Raised Tray version optional with adjustable legs and front panel in White only. Adds 100mm to height. Add £102 ex VAT
- Available in White, Matt White, Black, Pergamon
- Matt White is certified DIN51097 A Anti-Slip



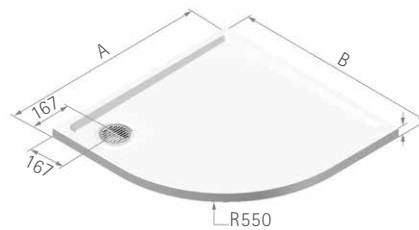
A	B	CLC	PRICE (EX. VAT)	PRICE (INC. VAT)
800	800	CLC800	£326.00	£391.20
900	900	CLC900	£369.00	£442.80
800	1000	CLC1080LH**	£364.00	£436.80
1000	800	CLC1080RH	£364.00	£436.80
900	1000	CLC1090LH**	£387.00	£464.40
1000	900	CLC1090RH	£387.00	£464.40
800	1200	CLC1280LH**	£403.00	£483.60
1200	800	CLC1280RH	£403.00	£483.60
900	1200	CLC1290LH**	£416.00	£499.20
1200	900	CLC1290RH	£416.00	£499.20
900	1500	CLC1590LH**	£437.00	£524.40
1500	900	CLC1590RH	£437.00	£524.40

\*\* Waste is located in RH corner for this model, other models have waste outlet in LH corner, see illustrations



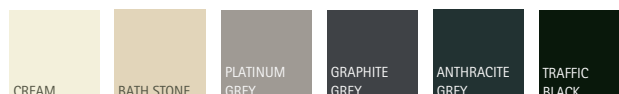
### UNIVERSAL 40 CURVED

- 40mm Height, 10mm Raised Threshold
- Stone resin, gel coating
- High-flow shower waste with Chrome flange and Stainless Steel grill as standard
- Raised Tray version optional with adjustable legs and front panel in colour to match tray. Adds 100mm to height. Add £102 ex VAT
- Available in any colour via RAL or sample matching



A	B	ULC	PRICE (EX. VAT)	PRICE (INC. VAT)
900	900	ULC900	£369.00	£442.80
900	1200	ULC1290LH**	£416.00	£499.20
1200	900	ULC1290RH	£416.00	£499.20
900	1500	ULC1590LH**	£437.00	£524.40
1500	900	ULC1590RH	£437.00	£524.40

POPULAR COLOUR OPTIONS FOR UNIVERSAL 40 CURVED AND UNIVERSAL 40 QUINTESS shower trays





**CONTINENTAL 40 QUINTESSA**

- ▮ 40mm Height, 10mm Raised Threshold
- ▮ Stone resin, double acrylic cap
- ▮ High-flow shower waste with Chrome flange and Stainless Steel grill as standard
- ▮ Raised Tray version optional with adjustable legs and front panel in White only. Adds 100mm to height. Add £98 ex VAT
- ▮ Available in White, Matt White, Black, Pergamon
- ▮ Matt White is certified DIN51097 A Anti-Slip



A	B	C	D	E	CLQ	PRICE (EX. VAT)	PRICE (INC. VAT)
900	900	918	398	398	CLQ900	£337.00	£404.40
1000	1000	1058	498	498	CLQ1000	£372.00	£446.40
900	1200	1129	698	398	CLQ1290LH	£375.00	£450.00
1200	900	1129	398	698	CLQ1290RH**	£375.00	£450.00
900	1500	1341	998	398	CLQ1590LH	£409.00	£490.80
1500	900	1341	398	998	CLQ1590RH**	£409.00	£490.80



**UNIVERSAL 40 QUINTESSA**

- ▮ 40mm Height, 10mm Raised Threshold
- ▮ Stone resin, gel coating
- ▮ High-flow shower waste with Chrome flange and Stainless Steel grill as standard
- ▮ Raised Tray version optional with adjustable legs and front panel in colour to match tray. Adds 100mm to height. Add £98 ex VAT
- 🌈 Available in any colour via RAL or sample matching



A	B	C	D	E	ULQ	PRICE (EX. VAT)	PRICE (INC. VAT)
900	900	918	398	398	ULQ900	£337.00	£404.40
1000	1000	1058	498	498	ULQ1000	£372.00	£446.40
900	1200	1129	698	398	ULQ1290LH	£375.00	£450.00
1200	900	1129	398	698	ULQ1290RH**	£375.00	£450.00
900	1500	1341	998	398	ULQ1590LH	£409.00	£490.80
1500	900	1341	398	998	ULQ1590RH**	£409.00	£490.80

\*\* Waste is located in RH corner for this model, other models have waste outlet in LH corner, see illustrations  
For waste options please see page 81

## MATKI SHOWERING

# GENERAL INFORMATION

EauZone is a luxury collection of Shower Enclosures, Wet Room Panels and Bath Screens in 10mm Safety Glass. It is available in a wide range of standard sizes and in custom, bespoke sizes. Due to the number of options available, it is strongly recommended that you visit a Matki Centre to view a display of the product you are interested in. You can find your nearest Matki Centre by visiting the Where To Buy section on our website and inputting your postcode.

The Matki website also includes an online EauZone Configuration Tool and a Bespoke Section to help you view the whole range of possibilities on offer. If you have any questions please do not hesitate to call us on our Customer Helpline.

All images, finishes and colours featured in this brochure are for representation purposes only. Finishes and colours may vary across materials.

### MATKI 10 YEAR GUARANTEE

Matki shower surrounds and shower trays are covered by a 10-year guarantee against parts failure, with the initial two-year period also having labour cost cover. Gold and Nickel-plated parts and all other special finishes and Matki Glass Guard are guaranteed for the initial two-year period only. Living Brass, Brushed Brass and Aged Brass finishes are not covered by the Guarantee. Matki Elixir and Matki Swadling thermostatic shower mixers and accessories and Matki Fastflow shower wastes are guaranteed for five years. The 10-year Matki guarantee is subject to registration and the issuing of a Guarantee number. It is subject to the terms and conditions stated on the Matki website.

### MATKI GLASS GUARD

Matki Glass Guard is an invisible glass surface coating which helps to reduce limescale and hard water deposits to make cleaning of the glass so much easier.

### WATER SOFTENERS AND GLASS GUARD

Certain types of water softeners increase the alkalinity of the water due to a carry-over of Chloride during re-generation which can cause aggressive water spots on both untreated and Glass Guarded glass. If using a water softener we recommend a two-cylinder machine with automatic re-generation instead of a timer.

If a single-cylinder water softener with timer is already installed it is recommended that after each shower excess water is removed from the glass with a squeegee or with a micro-fibre cloth.

### PRICES

Matki policy is one of continual improvement and we reserve the right to change specification, colour and prices without notice.

Matki PLC, Churchward Road, Yate, Bristol BS37 5PL

Tel: 01454 322 888 Email: [helpline@matki.co.uk](mailto:helpline@matki.co.uk)

[www.matki.co.uk](http://www.matki.co.uk)

Matki Shower Doors, Surrounds, and Trays are produced in accordance with BS EN ISO 9001:2000 Quality Assurance Systems.

Preference, Slate and Continental Matt White are Certified Anti Slip by DIN51097 and PTV standards. See individual product pages.

Matki, Swadling, EauZone, EauZone Plus, ONE, Eleganza, Classica, Colonade, Elixir, Finline, Illusion, Inswing, Mirage, Quintesse, Radiance and Preference are Registered Trade Marks.

All other Trade Marks featured, applied for. All rights reserved.

Design Rights Reserved: Elixir Hand Shower Duo, Radius-20 Wet Room Panel.

Colonade UK Patent No. GB2289 302.B Design Right and Copyright.

Matki Plc. All rights reserved.

Classica UK Patent No. GB2351299B.

Elixir shower mixer patent applied for.

EauZone Hinge patent no. UK: 2470778.

As part of the continuing policy of product improvement and design, we reserve the right to amend specification, colours and prices without prior notice.

Thank you to artist Mo Welch for her permission to use her licensed artwork 'Deco Girls' on page 17 of this brochure. Thank you to Domus Group [www.domusgroup.com](http://www.domusgroup.com) for the wonderful tiles featured on the front cover and pages 2 to 5, and to The Sodbury Florist [www.sodburyflorist.co.uk](http://www.sodburyflorist.co.uk) for the beautiful plants and flowers. Image featured on page 45 is a bespoke display at The Bathroom Company in Edinburgh.

Matki continuously develop new products, sizes, ideas and innovations and we recommend that you visit our website [www.matki.co.uk/matki-news](http://www.matki.co.uk/matki-news) for the latest updates.



**matki**  
10 YEAR GUARANTEE

EC Declaration of Performance tested.  
See [www.matki.co.uk](http://www.matki.co.uk) for details.



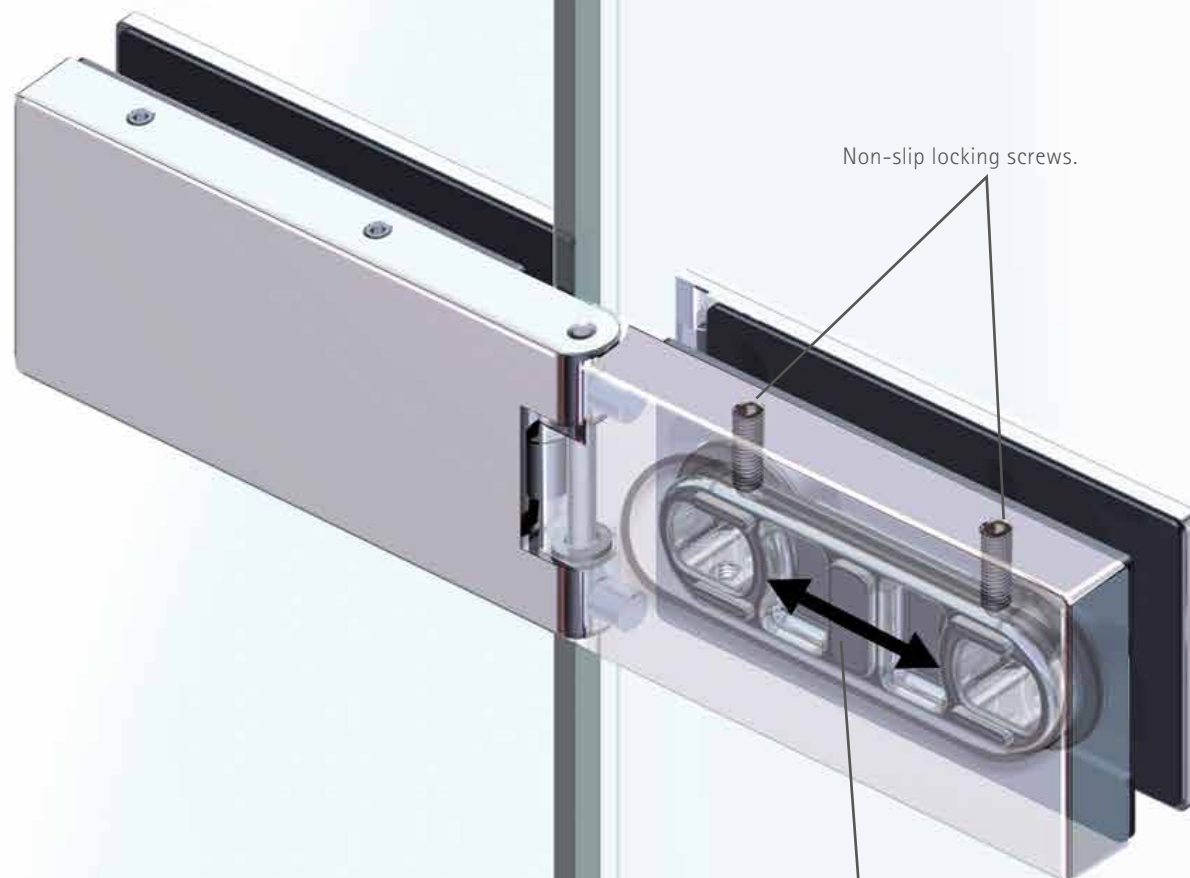
BSI certificate number: FM 14200



Charity registration number 288701 (England and Wales) and SC039479 (Scotland). Supported by the Matki Charity Fund.

## NON-SLIP HINGE DETAILS\*

All Eauzone Shower Doors and Bath Screens are fitted with Matki's unique non-slip hinge assemblies\*, retaining perfect adjustment of the door glass in use.



Non-slip locking screws.

Unique Brass Hinge Adjustment Block  
for exact door closure adjustment.



# matki

Matki PLC, Churchward Road, Yate, Bristol BS37 5PL

Tel: 01454 322 888 Email: [helpline@matki.co.uk](mailto:helpline@matki.co.uk)

[www.matki.co.uk](http://www.matki.co.uk)

All Matki products are designed  
and produced in the UK

